

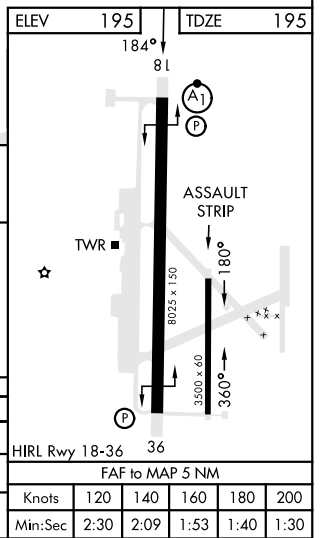
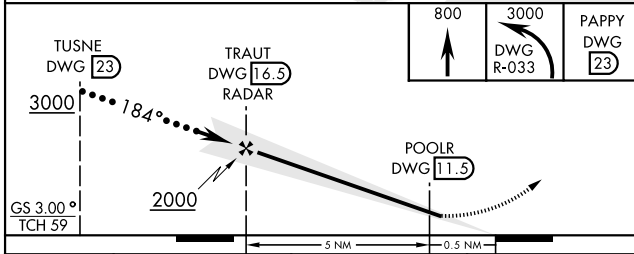
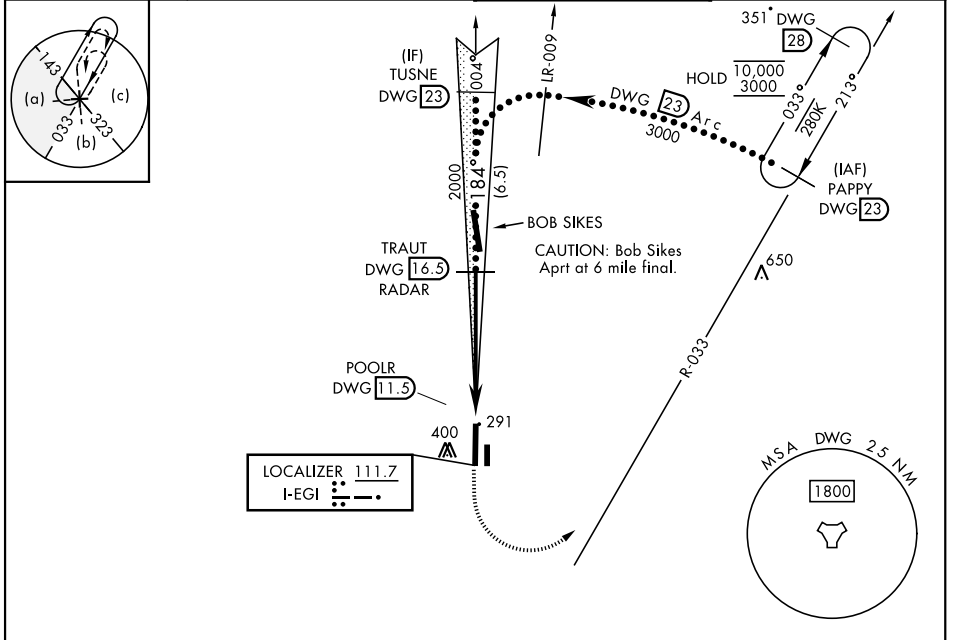
HI-ILS or LOC Y RWY 18

LOC I-EGI 111.7	APCH CRS 184°	Rwy Idg 8025 TDZE 195 Arprt Elev 195	[USAF]	DUKE FLD (EGLIN AF AUX NR 3)	(KEGI)
---------------------------	-------------------------	---	--------	------------------------------	--------

* When ALS inop, increase RVR to 40, vis to ¾ mile.
 ** When ALS inop, increase RVR to 55, vis to 1 mile.

ALSF-1 MISSED APPROACH: Climb to 800, then climbing left turn to 3000 on heading 078° and DWG TACAN R-033 to PAPPY (DWG R-033/23 DME) and hold.

ATIS ★ 244.575	EGLIN APP CON 125.1 281.45 (271° - 089°) 132.1 360.6 (090° - 270°)	TOWER ★ 133.2 290.425	GND CON 123.25 251.125
--------------------------	--	---------------------------------	----------------------------------



CATEGORY	C	D	E
S-ILS 18 *	395/24	200	(200-½)
S-LOC 18 **	540/30	345	(400-¾)
CIRCLING	740-1½ 545 (600-1½)	760-2 565 (600-2)	820-2¼ 625 (700-2¼)

HI-ILS or LOC Y RWY 18

SE-3, 16 APR 2026 to 14 MAY 2026

SE-3, 16 APR 2026 to 14 MAY 2026