

VALPARAISO, FLORIDA

# RNAV (GPS) RWY 36

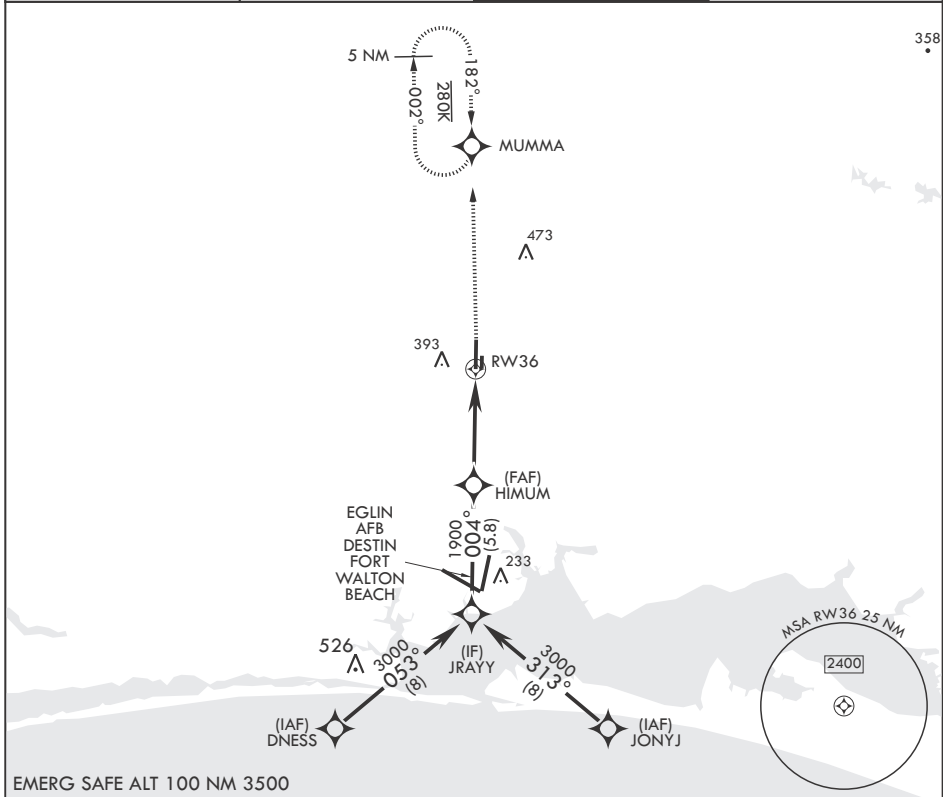
APCH CRS <b>004°</b>	Rwy Idg 8025
	TDZE 195
	Arprt Elev 195

-(USAF)

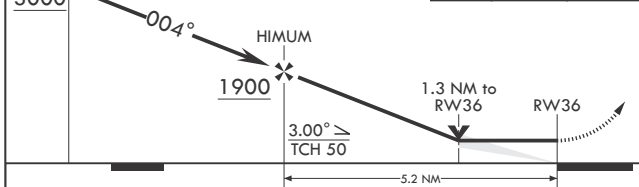
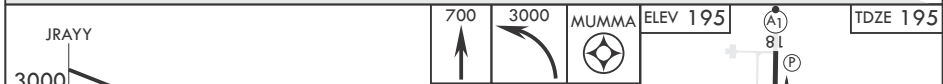
DUKE FIELD (EGLIN AF AUX NR 3) (KEGI)

RNP APCH-GPS MISSED APPROACH: Climb to 700, then climbing to 3000 direct MUMMA and hold, continue climb-in-hold to 3000.

ATIS★ <b>244.575</b>	APP CON <b>125.1 281.45 271°-089°</b> <b>132.1 360.6 090°-270°</b>	TOWER★ <b>133.2 290.425</b>	GND CON <b>123.25 251.125</b>
-------------------------	--	--------------------------------	----------------------------------



EMERG SAFE ALT 100 NM 3500



CATEGORY	A	B	C	D	E
LNVA MDA	640/55 445 (500-1)	640-1½ 445 (500-1½)	640-1½ 545 (600-1½)	760-2 565 (600-2)	820-2¼ 625 (700-2¼)
<b>C</b> CIRCLING	680-1 485 (500-1)	740-1 545 (600-1)	740-1½ 545 (600-1½)	760-2 565 (600-2)	820-2¼ 625 (700-2¼)

VALPARAISO, FLORIDA

30°39'N - 86°31'W

DUKE FIELD (EGLIN AF AUX NR 3) (KEGI)

Amdt 1 26DEC24

# RNAV (GPS) RWY 36

SE-3, 16 APR 2026 to 14 MAY 2026

SE-3, 16 APR 2026 to 14 MAY 2026