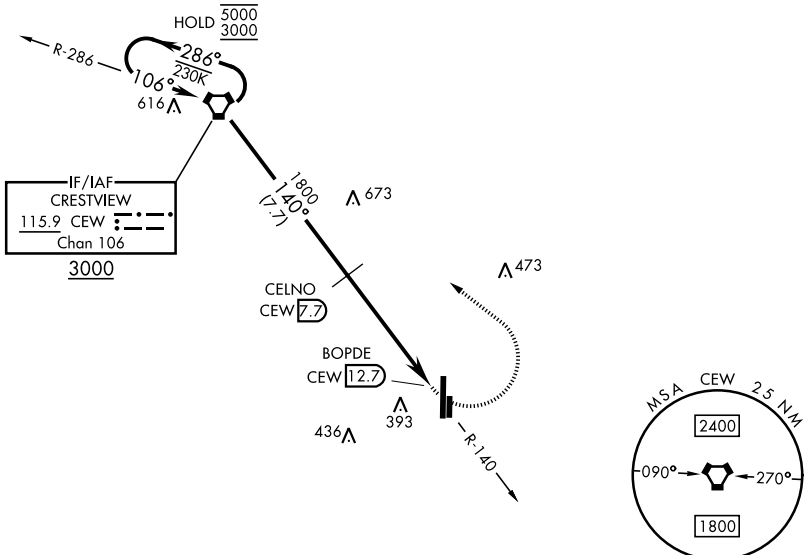


VORTAC CEW 115.9 Chan 106	APCH CRS 140°	Rwy Idg THRE Arpt Elev NA NA 195	[USAF]	DUKE FLD (EGLIN AF AUX NR 3) (KEGI)
---	-------------------------	--	--------	-------------------------------------

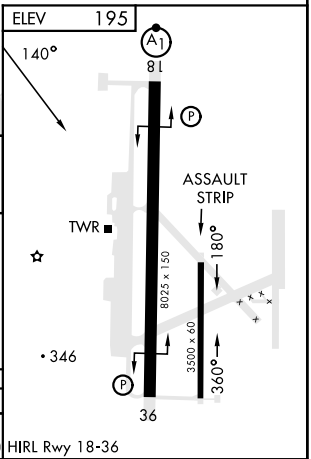
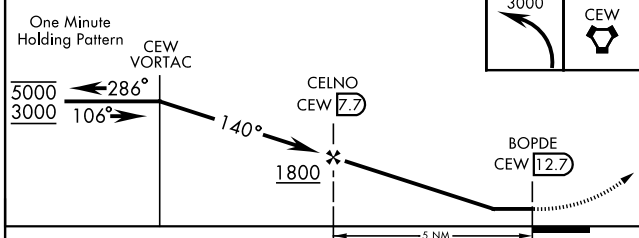
DME required

MISSED APPROACH: Climbing left turn to 3000 direct CEW VORTAC and hold.

ATIS ★ 244.575	EGLIN APP CON 125.1 281.45 (271° - 089°) 132.1 360.6 (090° - 270°)	DUKE TOWER ★ 133.2 290.425	GND CON 123.25 251.125
--------------------------	--	--------------------------------------	----------------------------------



EMERG SAFE ALT 100 NM 3500



CATEGORY	A	B	C	D	E	
C CIRCLING	700-1 505 (600-1)	740-1 545 (600-1)	740-1½ 545 (600-1½)	760-2 565 (600-2)	820-2¼ 625 (700-2¼)	HIRL Rwy 18-36

SE-3, 16 APR 2026 to 14 MAY 2026

SE-3, 16 APR 2026 to 14 MAY 2026