

APP CRS	Rwy Ldg	<b>4558</b>
<b>074°</b>	TDZE	<b>810</b>
	Apt Elev	<b>813</b>

# RNAV (GPS) RWY 7

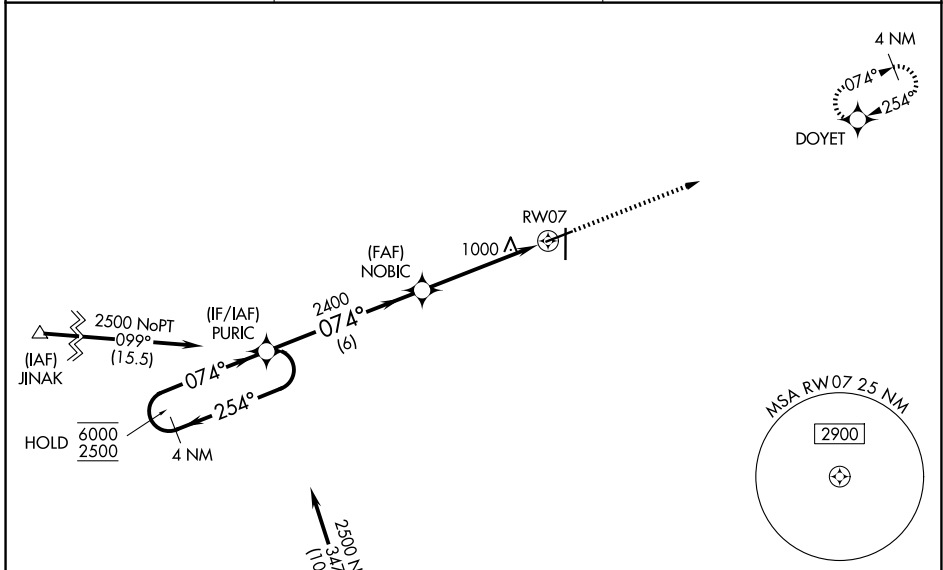
FINDLAY (F'DY)

RNP APCH - GPS.

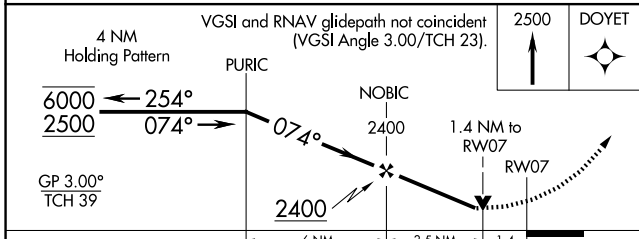
**⚠** Baro-VNAV and VDP NA when using Lima Allen County altimeter setting. Rwy 7 helicopter visibility reduction below  $\frac{3}{4}$  SM NA. For uncompensated Baro-VNAV systems, LNAV/VNAV NA below  $-16^{\circ}\text{C}$  or above  $54^{\circ}\text{C}$ . When local altimeter setting not received, use Lima altimeter setting and increase LNAV/VNAV DA to 1391 feet and all visibilities  $\frac{3}{8}$  SM. Increase all MDAs 80 feet and LNAV visibility Cat C/D  $\frac{1}{8}$  SM, and Circling visibility Cat C/D  $\frac{1}{4}$  SM. Straight-In Rwy 7 NA at night, Circling Rwy 7 NA at night.

**MISSED APPROACH:**  
Climb to 2500 direct DOYET and hold.

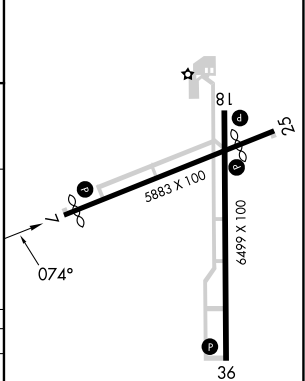
ASOS <b>132.85</b>	TOLEDO APP CON <b>120.8 317.55</b>	UNICOM <b>122.725 (CTAF) 0</b>
-----------------------	---------------------------------------	-----------------------------------



Procedure NA for arrivals at KINDE on V47 southbound.



ELEV 813	<b>D</b> TDZE 810
----------	-------------------



CATEGORY	A	B	C	D
LNAV/VNAV DA	1311-1 $\frac{3}{4}$		501 (500-1 $\frac{3}{4}$ )	
LNAV MDA	1260-1	450 (500-1)	1260-1 $\frac{3}{8}$	450 (500-1 $\frac{3}{8}$ )
CIRCLING	1440-1	627 (700-1)	1440-1 $\frac{3}{4}$ 627 (700-1 $\frac{3}{4}$ )	1540-2 $\frac{1}{4}$ 727 (800-2 $\frac{1}{4}$ )

MIRL Rwy 7-25 **0**  
HIRL Rwy 18-36 **0**  
REIL Rws 7, 25 and 36 **0**

EC-2, 16 APR 2026 to 14 MAY 2026

EC-2, 16 APR 2026 to 14 MAY 2026