

VORTAC FBC <b>108.2</b> Chan <b>19</b>	APP CRS <b>048°</b>	Rwy Ldg <b>4558</b> TDZE <b>810</b> Apt Elev <b>813</b>
--	------------------------	---

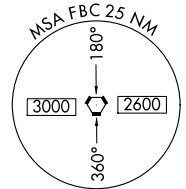
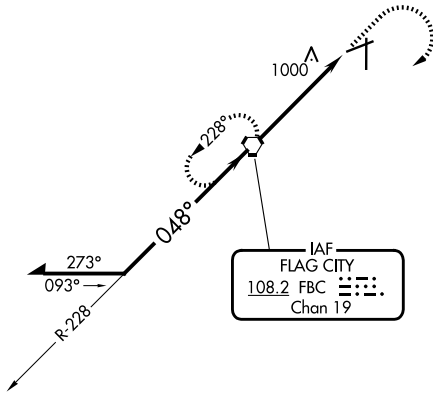
# VOR RWY 7

FINDLAY (FDY)

**⚠** Rwy 7 helicopter visibility reduction below 1 SM NA. When local altimeter setting not received, use Lima Allen County altimeter setting and increase all MDA 80 feet, and increase S-07 visibility Cat C/D 1/8 SM, and Circling visibility Cat C/D 1/4 SM. Straight-In Rwy 7 NA at night, Circling Rwy 7 NA at night.

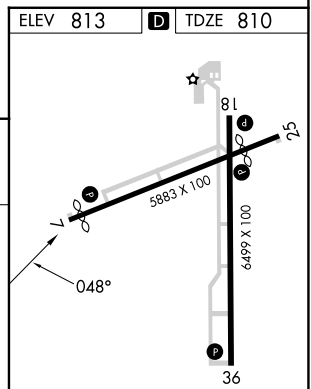
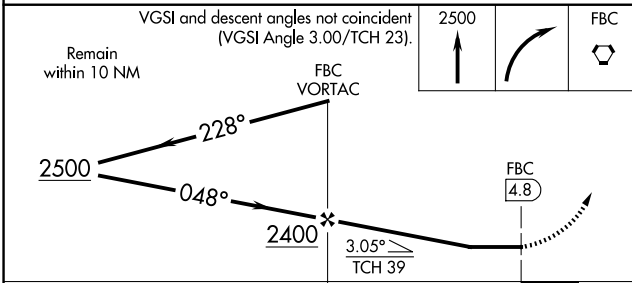
**⚠** MISSED APPROACH: Climb to 2500 then right turn direct FBC VORTAC and hold.

ASOS <b>132.85</b>	TOLEDO APP CON <b>120.8 317.55</b>	UNICOM <b>122.725 (CTAF) 1</b>
-----------------------	---------------------------------------	-----------------------------------



EC-2, 16 APR 2026 to 14 MAY 2026

EC-2, 16 APR 2026 to 14 MAY 2026



CATEGORY	A	B	C	D	MIRL Rwy 7-25 <b>1</b>	HIRL Rwy 18-36 <b>1</b>	REIL Rws 7, 25 and 36 <b>1</b>			
S-7	1260-1	450 (500-1)	1260-1 1/4 450 (500-1 1/4)	1260-1 1/2 450 (500-1 1/2)	FAF to MAP 4.8 NM					
CIRCLING	1440-1	627 (700-1)	1440-1 3/4 627 (700-1 3/4)	1540-2 1/4 727 (800-2 1/4)	Knots	60	90	120	150	180
					Min:Sec	4:48	3:12	2:24	1:55	1:36