

REDSTONE ARSENAL, ALABAMA

RNAV (GPS) RWY 17

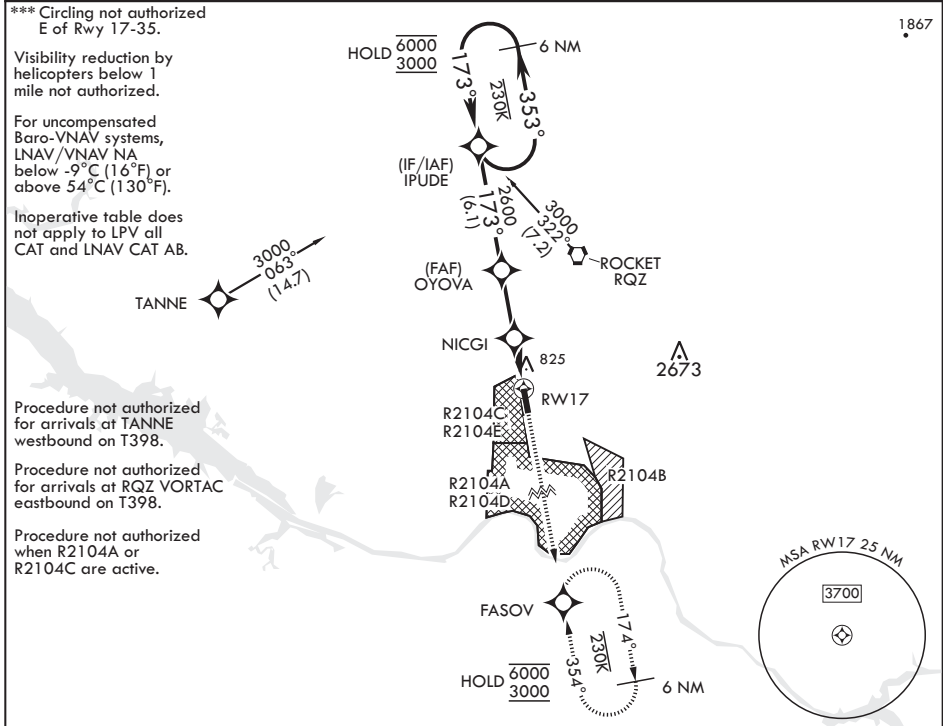
WAAS CH 45638 W17A	APCH CRS 173°	Rwy ldg TDZE 7300 685	Arprt Elev 685
--------------------------	------------------	-----------------------------	-------------------

-(USA)

REDSTONE AAF (KHUA)

RNP APCH - GPS	MALSR A5	MISSED APPROACH: Climb to 3000 direct FASOV and hold.
<p>▼ * When ALS inop, increase CAT ABCD vis to 1 1/4 miles; increase CAT E vis to 1 1/2 miles. ** When ALS inop, increase CAT CDE vis to 1 3/8 miles.</p>		

ATIS 120.65	HUNTSVILLE APP CON/DEP CON* 125.6 354.1	TOWER* 126.95 (CTAF) 290.275	PAR
----------------	--	---------------------------------	-----



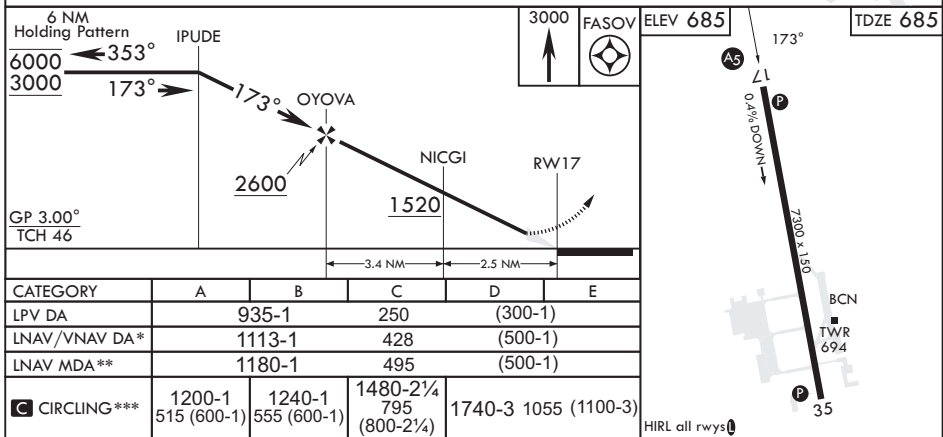
Procedure not authorized for arrivals at TANNE westbound on T398.

Procedure not authorized for arrivals at RQZ VORTAC eastbound on T398.

Procedure not authorized when R2104A or R2104C are active.

SE-4, 16 APR 2026 to 14 MAY 2026

SE-4, 16 APR 2026 to 14 MAY 2026



REDSTONE ARSENAL, ALABAMA

34°41'N - 86°41'W

REDSTONE AAF (KHUA)

Amdt 2 05OCT23

RNAV (GPS) RWY 17