

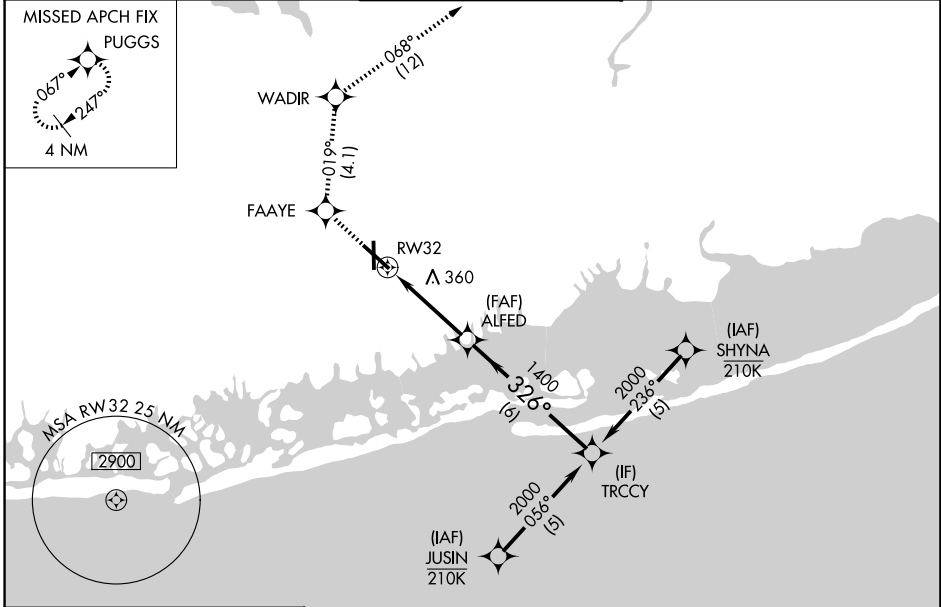
WAAS CH 70715 W32A	APP CRS 326°	Rwy Ldg TDZE Apt Elev	6833 68 80
--	------------------------	-----------------------------	---------------------------------------

RNAV (GPS) RWY 32

REPUBLIC (F'RG)

RNP APCH - GPS.	MISSED APPROACH: (Do not exceed 190K until WADIR) Climb to 2000 direct FAAYE then on track 019° to WADIR and on track 068° to PUGGS and hold.
<p>▼ For uncompensated Baro-VNAV systems, LNAV/VNAV NA below -12°C or above 54°C. ▲ Rwy 32 helicopter visibility reduction below ¾ SM NA.</p>	

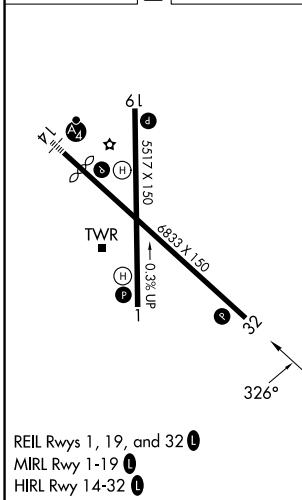
ATIS 126.65	NEW YORK APP CON 128.125 269.0	REPUBLIC TOWER ★ 118.8 (CTAF) 0 279.65	GND CON 121.6 269.6	UNICOM 122.95
-----------------------	--	--	-------------------------------	-------------------------



NE-2, 16 APR 2026 to 14 MAY 2026

NE-2, 16 APR 2026 to 14 MAY 2026

ELEV 80	D	TDZE 68
---------	----------	---------



2000	FAAYE	tr 019°	WADIR	tr 068°	PUGGS
			ALFED		TRCCY
		1.7 NM to RW32	1400	326°	2000
		1.7 NM	2.2 NM	6 NM	
					GP 3.10° TCH 60
CATEGORY	A	B	C	D	
LPV DA		328-¾	260 (300-¾)		
LNAV/VNAV DA		355-⅞	287 (300-⅞)		
LNAV MDA	660-1	592 (600-1)	660-1¾	592 (600-1¾)	
CIRCLING	660-1 580 (600-1)	720-1 640 (700-1)	860-2¼ 780 (800-2¼)	1000-3 920 (1000-3)	