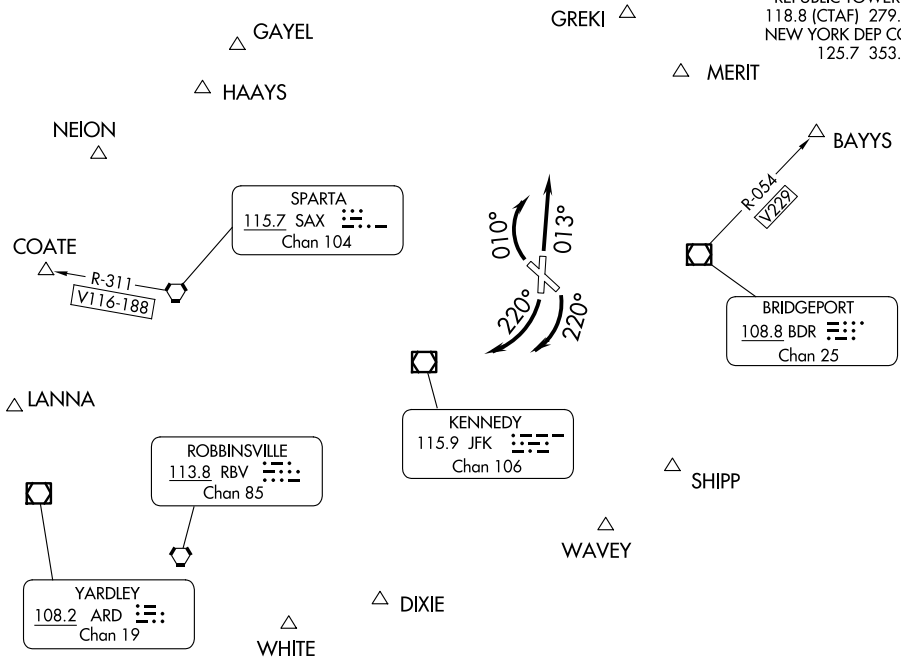


REPUBLIC ONE DEPARTURE

REPUBLIC (F'R'G)
FARMINGDALE, NEW YORK

**TOP ALTITUDE:
3000**

ATIS 126.65
CLNC DEL 128.25
GND CON 121.6 269.6
REPUBLIC TOWER * 118.8 (CTAF) 279.65
NEW YORK DEP CON 125.7 353.75



NE-2, 16 APR 2026 to 14 MAY 2026

NE-2, 16 APR 2026 to 14 MAY 2026

NOTE: RADAR required.

TAKEOFF MINIMUMS:

Rwy 14, 19: Standard.

Rwy 1: 300-1¼ or standard with minimum climb of 240' per NM to 300, or alternatively, with standard takeoff minimums and a normal 200' per NM climb gradient, takeoff must occur no later than 1900' prior to DER.

Rwy 32: Standard with minimum climb of 240' per NM to 800.

NOTE: Chart not to scale.



DEPARTURE ROUTE DESCRIPTION

TAKEOFF RUNWAY 1: Climb heading 013°, thence....

TAKEOFF RUNWAYS 14, 19: Climbing right turn to heading 220°, thence....

TAKEOFF RUNWAY 32: Climbing right turn to heading 010°, thence....

...RADAR vectors to assigned route or depicted fix. Maintain 3000. Expect clearance to filed altitude/flight level 10 minutes after departure.

BAYYS DEPARTURES: RADAR vectors will be provided to BDR VOR/DME R-054 to BAYYS.

COATE DEPARTURES: RADAR vectors will be provided to SAX VORTAC R-311, to COATE.

REPUBLIC ONE DEPARTURE

FARMINGDALE, NEW YORK
REPUBLIC (F'R'G)