

APP CRS	Rwy Ldg	<b>6157</b>
<b>146°</b>	TDZE	<b>77</b>
	Apt Elev	<b>81</b>

# RNAV (RNP) Z RWY 14

REPUBLIC (F'RG)

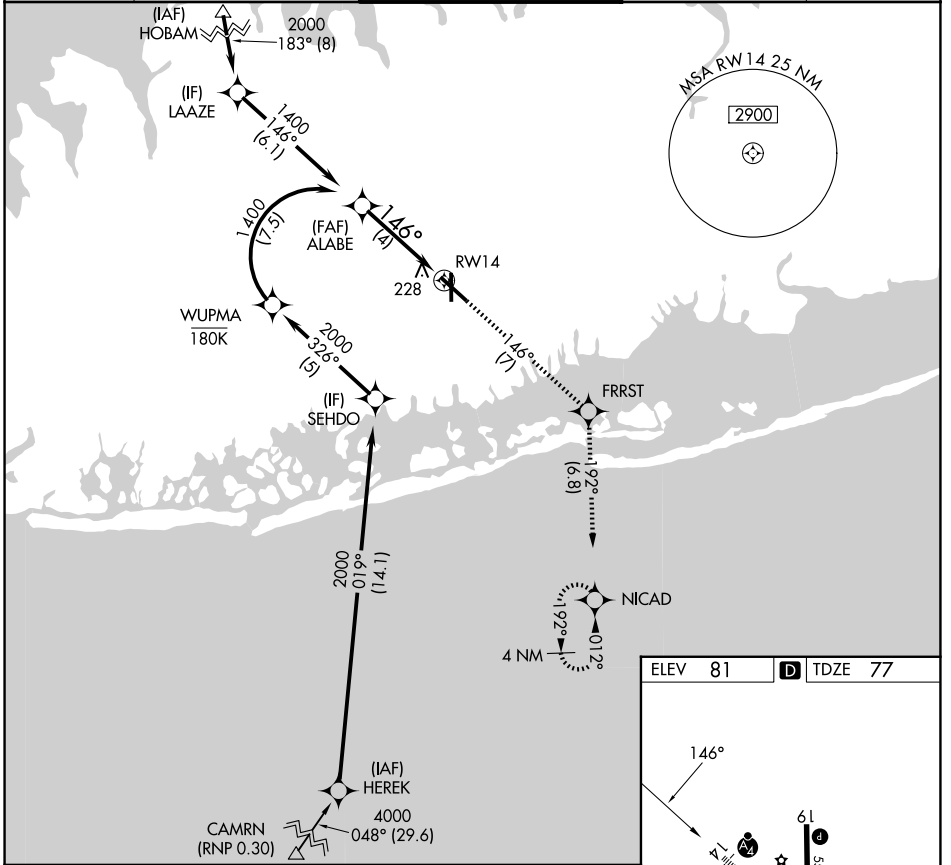
RNP AR APCH. RF required from HEREK.

**▼** For uncompensated Baro-VNAV systems, procedure NA below -12°C or above 48°C.

**MALSF**

**MISSED APPROACH:** Climb to 2000 on track 146° to FRRST and on track 192° to NICAD and hold.

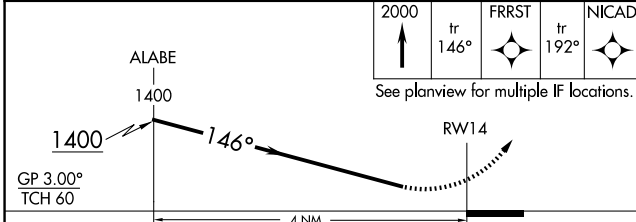
<b>ATIS</b> <b>126.65</b>	<b>NEW YORK APP CON</b> <b>128.125 269.0</b>	<b>REPUBLIC TOWER ★</b> <b>118.8 (CTAF) 0 279.65</b>	<b>GND CON</b> <b>121.6 269.6</b>	<b>UNICOM</b> <b>122.95</b>
------------------------------	---	---	--------------------------------------	--------------------------------



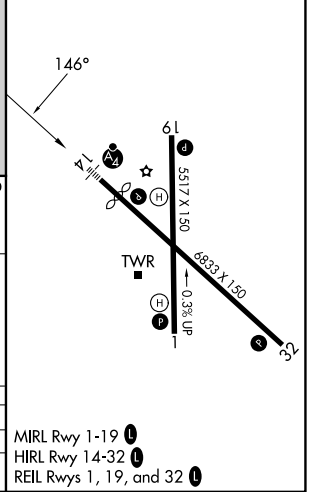
NE-2, 16 APR 2026 to 14 MAY 2026

NE-2, 16 APR 2026 to 14 MAY 2026

ELEV 81	<b>D</b> TDZE 77
---------	------------------



GP 3.00°	TCH 60			
2000	tr 146°	FRRST	tr 192°	NICAD
See planview for multiple IF locations.				
CATEGORY	A	B	C	D
RNP 0.30 DA		525-1 <sup>3</sup> / <sub>8</sub>	447 (500-1 <sup>3</sup> / <sub>8</sub> )	



MIRL Rwy 1-19 **1**

HIRL Rwy 14-32 **1**

REIL Rwys 1, 19, and 32 **1**