

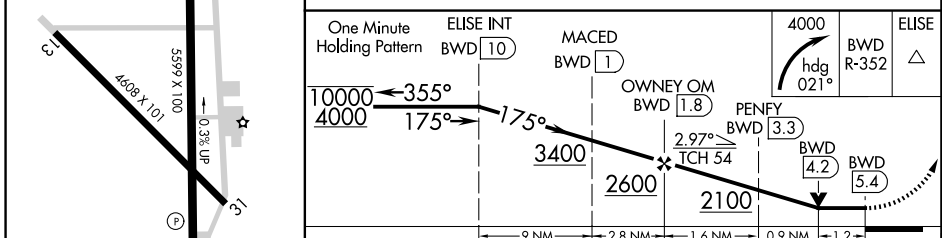
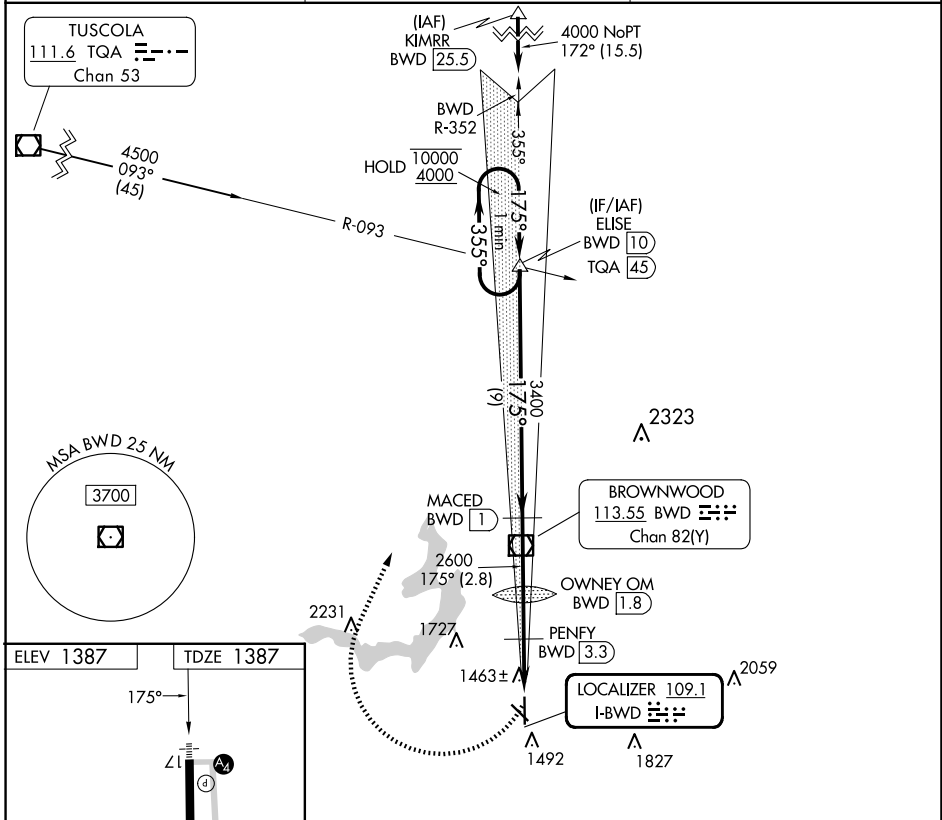
LOC I-BWD 109.1	APP CRS 175°	Rwy Ldg 5599	TDZE 1387
		Apt Elev 1387	

LOC RWY 17

BROWNWOOD RGNL (BWD)

DME required. RADAR required for procedure entry at KIMRR.	MALS	MISSED APPROACH: Climbing right turn to 4000 on heading 021° and on BWD VOR/DME. DME use requires simultaneous reception of I-BWD and BWD DME.
<p>Rwy 17 helicopter visibility reduction below 3/4 SM NA. DME from BWD VOR/DME. DME use requires simultaneous reception of I-BWD and BWD DME.</p>		

AWOS-3 118.325	FORT WORTH CENTER 127.45 290.3	UNICOM 122.8 (CTAF)
--------------------------	--	-------------------------------



CATEGORY	A	B	C	D
S-LOC 17		1760-3/4	373 (400-3/4)	
CIRCLING	1820-1 433 (500-1)	1840-1 453 (500-1)	2040-1 3/4 653 (700-1 3/4)	2160-2 1/2 773 (800-2 1/2)

SC-3, 16 APR 2026 to 14 MAY 2026

SC-3, 16 APR 2026 to 14 MAY 2026