

VOR/DME BWD 113.55 Chan 82 (Y)	APP CRS 351°	Rwy Idg 5599 TDZE 1386 Apt Elev 1387
--	------------------------	---

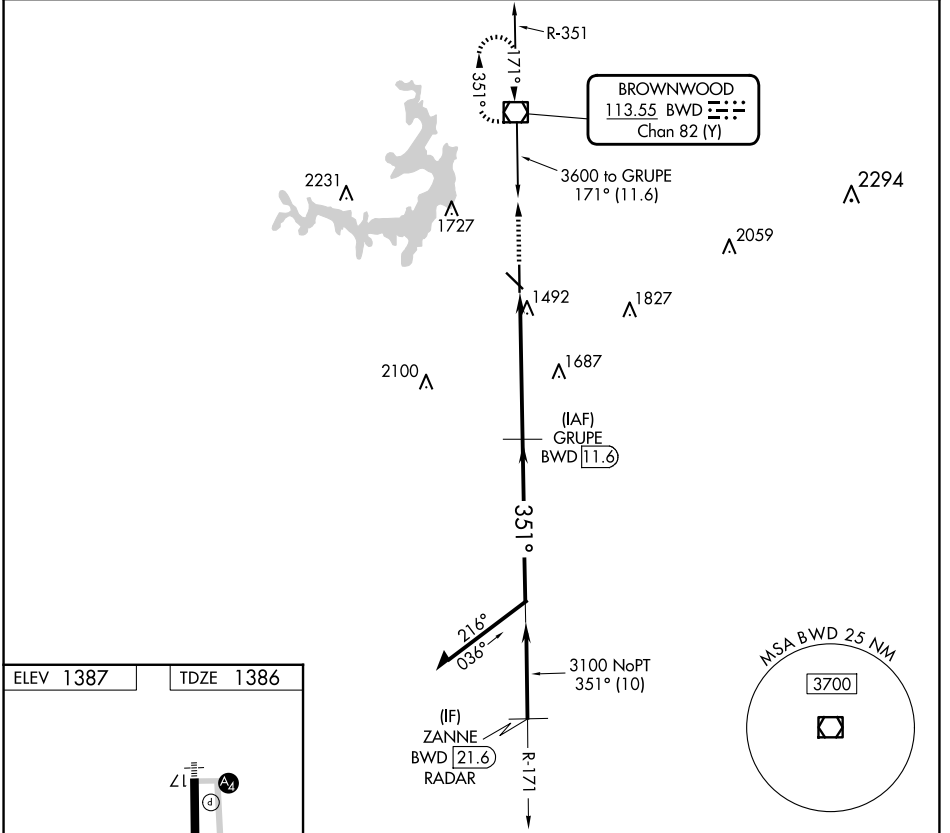
VOR RWY 35

BROWNWOOD RGNL (BWD)

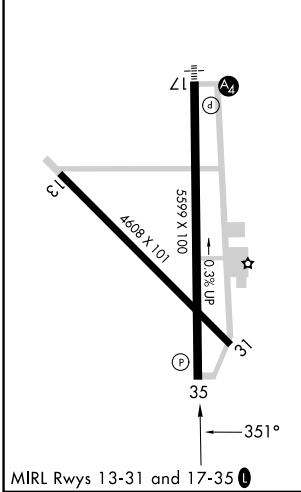
RADAR required for procedure entry. DME required.

MISSED APPROACH: Climb to 3600 direct BWD VOR/DME and hold, continue climb-in-hold to 3600.

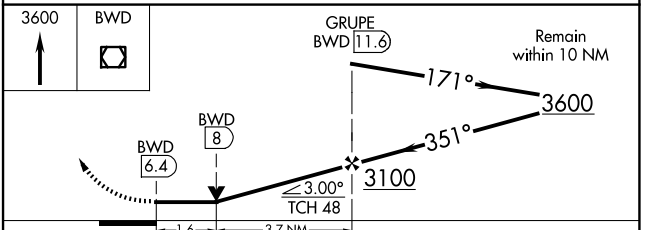
AWOS-3 118.325	FORT WORTH CENTER 127.45 290.3	UNICOM 122.8 (CTAF) 0
--------------------------	--	---------------------------------



ELEV 1387	TDZE 1386
-----------	-----------



BROWNWOOD, TEXAS
Amdt 2 31OCT24



CATEGORY	A	B	C	D
S-35	1940-1	554 (600-1)	1940-1½	554 (600-1½)
CIRCLING	1940-1	553 (600-1)	2040-1¾ 653 (700-1¾)	2160-2½ 773 (800-2½)

31°48'N-98°57'W

BROWNWOOD RGNL (BWD) VOR RWY 35

SC-3, 16 APR 2026 to 14 MAY 2026

SC-3, 16 APR 2026 to 14 MAY 2026