

25275

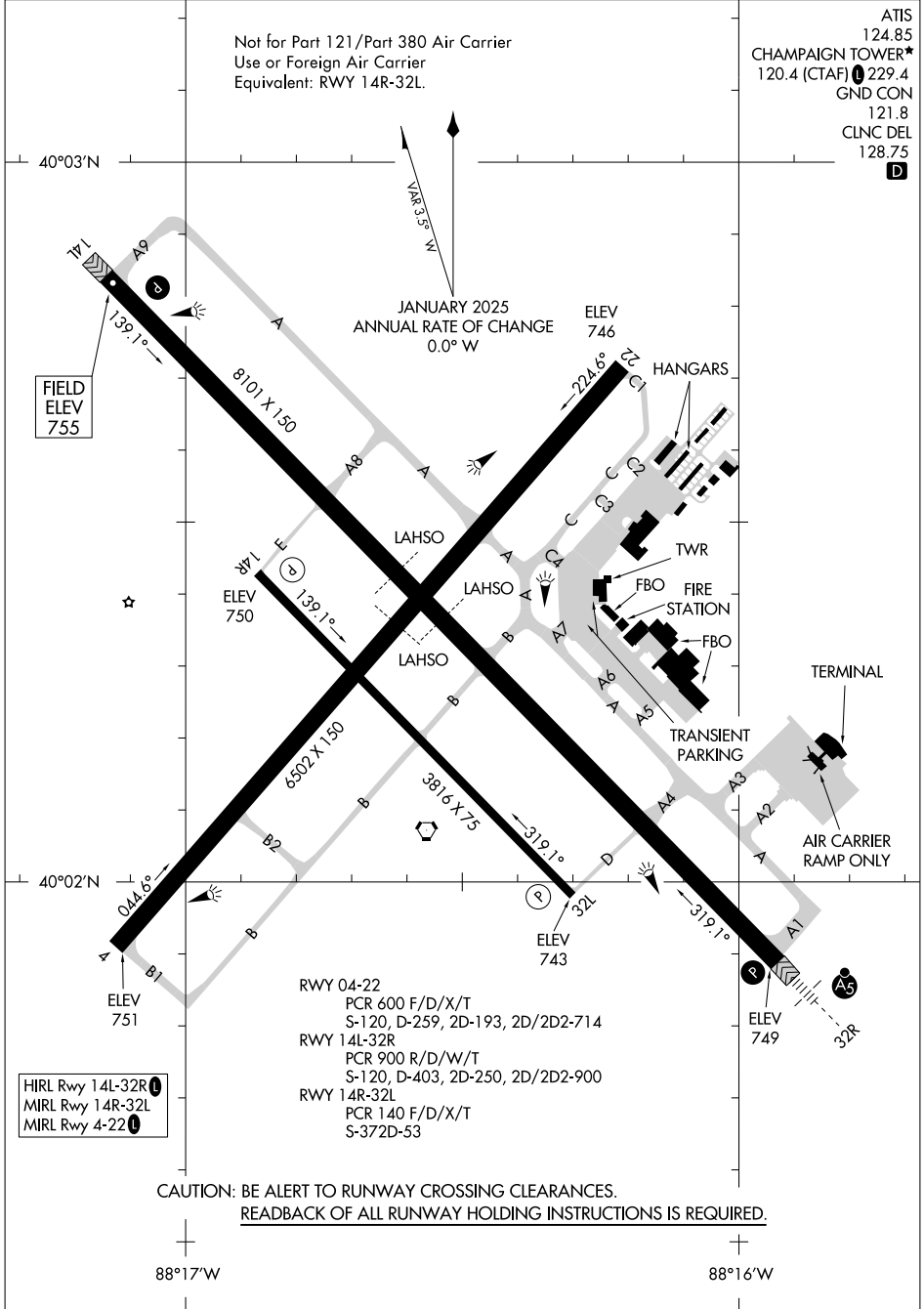
AIRPORT DIAGRAM

AL-709 (FAA)

UNIVERSITY OF ILLINOIS/WILLARD (CMI)
CHAMPAIGN/URBANA, ILLINOIS

ATIS 124.85
 CHAMPAIGN TOWER* 120.4 (CTAF) 229.4
 GND CON 121.8
 CLNC DEL 128.75
 D

Not for Part 121/Part 380 Air Carrier
 Use or Foreign Air Carrier
 Equivalent: RWY 14R-32L.



EC-3, 16 APR 2026 to 14 MAY 2026

EC-3, 16 APR 2026 to 14 MAY 2026

AIRPORT DIAGRAM

25275

CHAMPAIGN/URBANA, ILLINOIS
UNIVERSITY OF ILLINOIS/WILLARD (CMI)