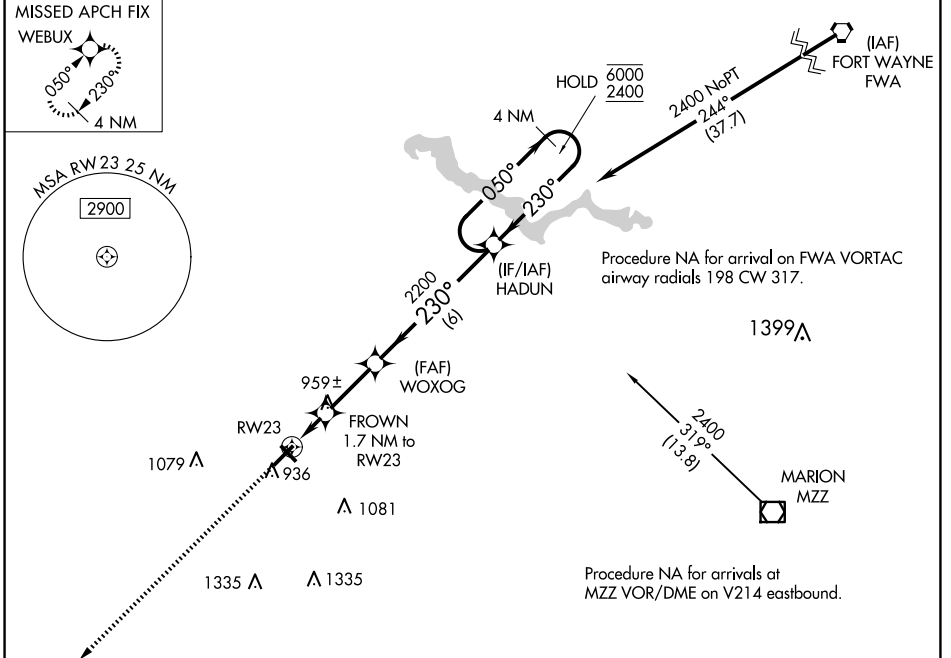


WAAS CH 40119 W23A	APP CRS 230°	Rwy Idg TDZE Apt Elev	6001 827 832
----------------------------------------	------------------------	-----------------------------	-----------------------------------------

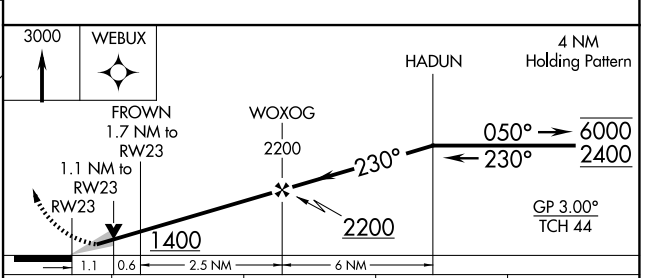
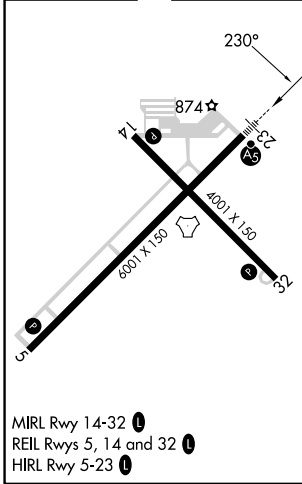
RNAV (GPS) RWY 23

KOKOMO MUNI (OKK)

RNP APCH - GPS.		MALSR	MISSED APPROACH: Climb to 3000 direct WEBUX and hold.
<p>▼ For uncompensated Baro-VNAV systems, LNAV/VNAV NA below -16°C or above 54°C.</p>			
AWOS-3PT 128.675	GRISSOM APP CON * 121.05 338.275	CLNC DEL 120.0	UNICOM 123.0 (CTAF) 0



ELEV 832	TDZE 827
----------	----------



CATEGORY	A	B	C	D
LPV DA		1027-1/2	200 (200-1/2)	
LNAV/VNAV DA		1224-5/8	397 (400-5/8)	
LNAV MDA	1220-1/2	393 (400-1/2)	1220-5/8	393 (400-5/8)
CIRCLING	1260-1 428 (500-1)	1300-1 468 (500-1)	1400-1 1/2 568 (600-1 1/2)	1420-2 588 (600-2)

EC-2, 16 APR 2026 to 14 MAY 2026

EC-2, 16 APR 2026 to 14 MAY 2026