

CAMP DOUGLAS, WISCONSIN

# ILS or LOC/DME RWY 27

LOC I-VOK <b>108.5</b>	APCH CRS <b>269°</b>	Rwy ldg THRE Arprt Elev <b>9000</b> <b>904</b> <b>912</b>	AL-714 [USAF]	VOLK FLD (KVOK)
---------------------------	-------------------------	--	---------------	-----------------

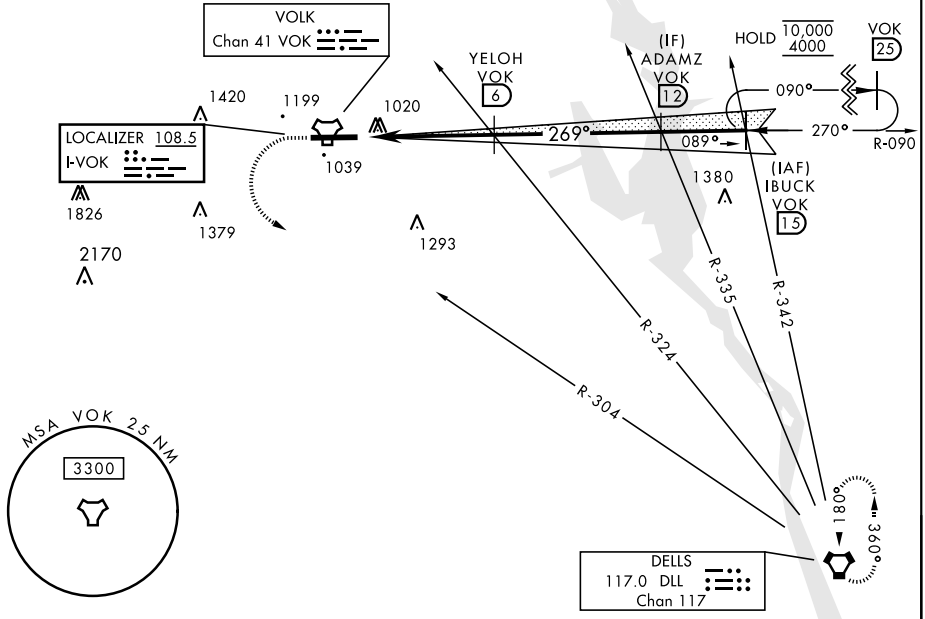
\* When ALS inop, increase vis to ¾ mile.  
 \*\* When ALS inop, increase CAT AB vis to 1 mile, CAT CDE vis to 1½ miles.
 

 ALSF-1  

 MISSED APPROACH: Climb to 2200, then climbing left turn to 4000 via DLL VORTAC R-304 direct DLL and hold.

ATIS <b>134.35 257.85</b>	APP CON <b>135.25 244.875</b>	TOWER * <b>127.5</b> (CTAF) <b>239.25</b>	GND CON <b>121.9 275.8</b>
------------------------------	----------------------------------	--	-------------------------------

\*\*\* Circling NA South of Rwy 9-27.



EC-3, 16 APR 2026 to 14 MAY 2026

EC-3, 16 APR 2026 to 14 MAY 2026

EMERG SAFE ALT 100 NM 4200		ELEV 912	THRE 904			
2200 4000 DLL R-304	YELOH VOK 6 ADAMZ VOK 12 IBUCK/VOK 15 R-090	2900				
TACAN	AKETT VOK 1.5	VOK 2.2	2500			
			2700			
			2500			
			GS 2.85° TCH 53			
CATEGORY	A	B	C	D	E	
S-ILS 27 *	1104/24		200	(200-½)		
S-LOC 27 **	1320/24	416 (500-½)	1320/40	416 (500-¾)		
CIRCLING ***	1400-1 488 (500-1)	1500-1 588 (600-1)	1500-1½ 588 (600-½)	1500-2 588 (600-2)	1580-2¼ 668 (700-2¼)	
HIRL Rwy 9-27						
FAF to MAP 4.5 NM						
Knots		60	90	120	150	180
Min:Sec		4:30	3:00	2:15	1:48	1:30

CAMP DOUGLAS, WISCONSIN 43°56'N-90°15'W VOLK FLD (KVOK)

# ILS or LOC/DME RWY 27

Amtd 4