

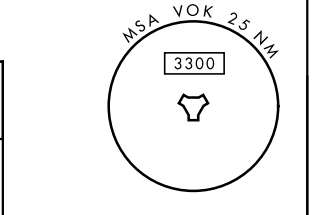
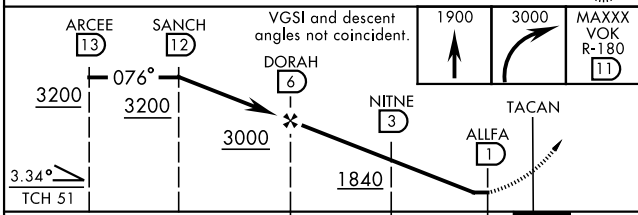
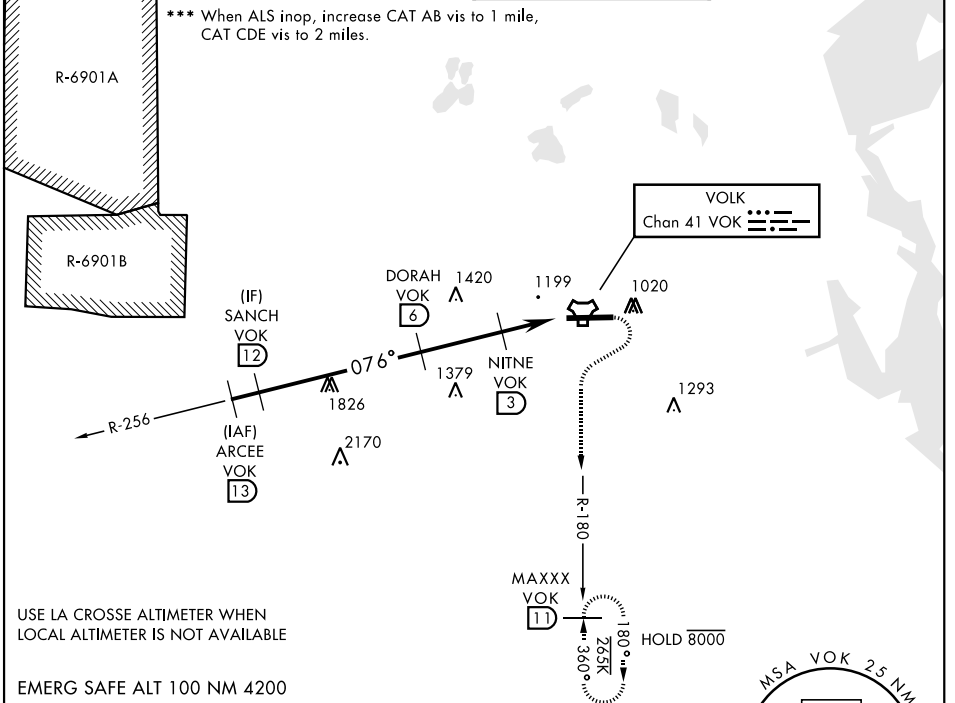
TACAN VOK Chan 41	APCH CRS 076°	Rwy ldg THRE Arpt Elev 9000 912 912	AL-714 [USAF]	VOLK FLD (KVOK)
----------------------	------------------	--	---------------	-----------------

▼ * When ALS inop, increase CAT AB vis to 1 mile, CAT CDE vis to 1 3/4 miles.
 ** Circling not authorized South of Rwy 9-27.

MALSR A5

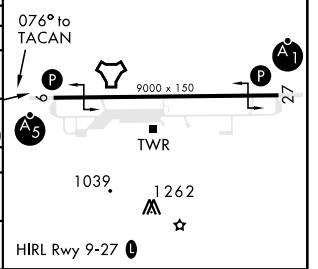
MISSED APPROACH: Climb to 1900, then climbing right turn to 3000 intercept VOK R-180 to MAXXX and hold.

ATIS 134.35 257.85	APP CON 135.25 244.875	TOWER * 127.5 0 (CTAF) 239.25 0	GND CON 121.9 275.8
-----------------------	---------------------------	------------------------------------	------------------------



ELEV 912	THRE 912
----------	----------

CATEGORY	A	B	C	D	E
S-9*	1500-3/4	588 (600-3/4)	1500-1 1/4	588 (600-1 1/4)	
CIRCLING**	1500-1	588 (600-1)	1500-1 3/4 588 (600-1 3/4)	1500-2 588 (600-2)	1580-2 1/4 668 (700-2 1/4)
LA CROSSE ALTIMETER SETTING MINIMUMS					
S-9***	1640-3/4	728 (800-3/4)	1640-1 5/8	728 (800-1 5/8)	
CIRCLING**	1640-1	728 (800-1)	1640-2 728 (800-2)	1640-2 1/4 728 (800-2 1/4)	1720-2 3/4 808(900-2 3/4)



EC-3, 16 APR 2026 to 14 MAY 2026

EC-3, 16 APR 2026 to 14 MAY 2026