

| | | | |
|---------------------------|------------------------|-----------------------------|---|
| LOC I-AZO 110.9 | APP CRS 354° | Rwy Ldg TDZE Apt Elev | 6502 868 874 |
|---------------------------|------------------------|-----------------------------|---|

ILS or LOC RWY 35

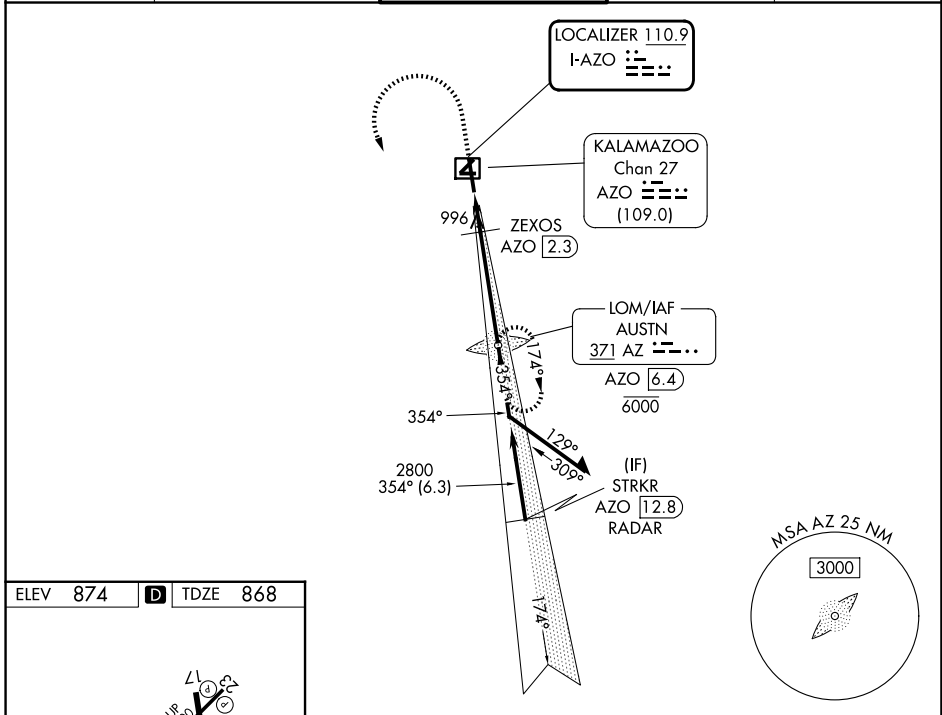
KALAMAZOO/BATTLE CREEK INTL (AZO)

ADF required. DME required for LOC only. RADAR required for procedure entry.

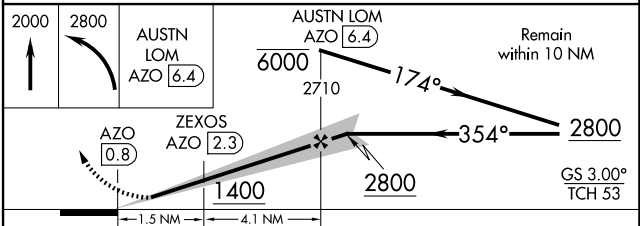
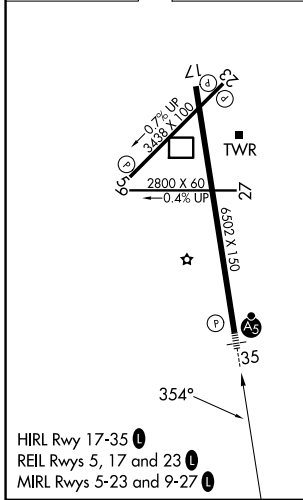
NA DME from AZO DME. DME use requires simultaneous reception of I-AZO and AZO DME. Circling Rwy 5, 9, 23, 27 NA at night. When local altimeter setting not received, use BTL altimeter setting: increase S-ILS 35 DA to 1112 feet; increase all MDAs 60 feet and visibility S-LOC 35 Cats C/D to RVR 4500 and Circling visibility Cats C/D ¼ SM. * RVR 1800 authorized with use of FD or AP or HUD to DA (NA when using Battle Creek altimeter setting).

MALSR MISSED APPROACH: Climb to 2000 then climbing left turn to 2800 direct AUSTN LOM/AZO 6.4 DME and hold.

| | | | | |
|-----------------------|--|--|-------------------------|-------------------------|
| ATIS 127.25 | GREAT LAKES APP CON * 121.2 239.25 | KALAMAZOO TOWER * 118.3 (CTAF) 0 257.875 | GND CON 121.9 | UNICOM 122.95 |
|-----------------------|--|--|-------------------------|-------------------------|



| | | |
|----------|----------|----------|
| ELEV 874 | D | TDZE 868 |
|----------|----------|----------|



| CATEGORY | A | B | C | D |
|-----------|---------------------|-------------|-----------------------|-------------------------|
| S-ILS 35* | 1068/24 200 (200-½) | | | |
| S-LOC 35 | 1260/24 | 392 (400-½) | 1260/35 | 392 (400-¾) |
| CIRCLING | 1340-1 | 466 (500-1) | 1560-2 686 (700-2) | 1560-2¼ 686 (700-2¼) |