

WAAS CH 57933 W17A	APP CRS 174°	Rwy Ldg TDZE 6502 867	Apt Elev 874
--	------------------------	---	------------------------

RNAV (GPS) RWY 17

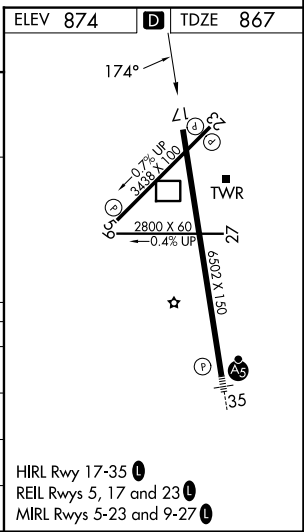
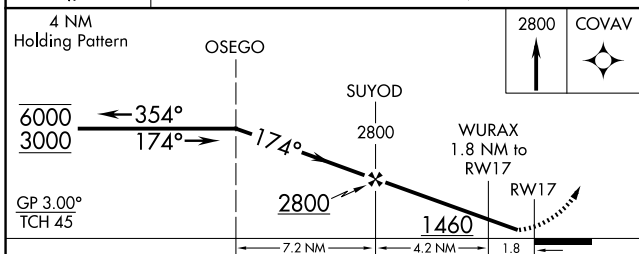
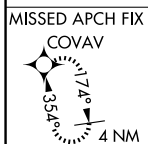
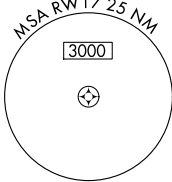
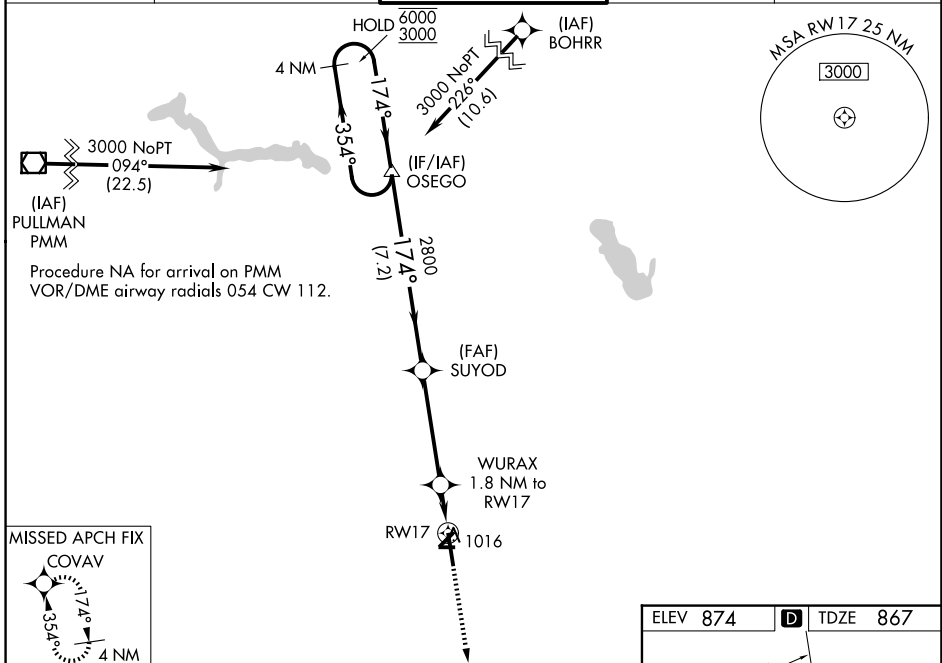
KALAMAZOO/BATTLE CREEK INTL (AZO)

RNP APCH - GPS

⚠ Baro-VNAV NA when using BTL altimeter setting. Rwy 17 helicopter visibility reduction below 3/4 SM NA. For uncompensated Baro-VNAV systems, LNAV/VNAV NA below -20°C or above 54°C. Circling Rwy 5, 9, 23, 27 NA at night. When local altimeter setting not received, use BTL altimeter setting; increase LPV DA to 1200 feet, LNAV/VNAV DA to 1229 feet; increase all MDAs 60 feet and Circling visibility Cats C/D 1/4 SM.

MISSED APPROACH:
Climb to 2800 direct COVAV and hold.

ATIS 127.25	GREAT LAKES APP CON ★ 121.2 239.25	KALAMAZOO TOWER ★ 118.3 (CTAF) 0 257.875	GND CON 121.9	UNICOM 122.95
-----------------------	--	---	-------------------------	-------------------------



CATEGORY	A	B	C	D
LPV DA		1156-1	289 (300-1)	
LNAV/VNAV DA		1185-1	318 (400-1)	
LNAV MDA	1320-1	453 (500-1)	1320-1 3/8	453 (500-1 3/8)
CIRCLING	1340-1	466 (500-1)	1560-2 686 (700-2)	1560-2 1/4 686 (700-2 1/4)

EC-1, 16 APR 2026 to 14 MAY 2026

EC-1, 16 APR 2026 to 14 MAY 2026