

ALPENA, MICHIGAN

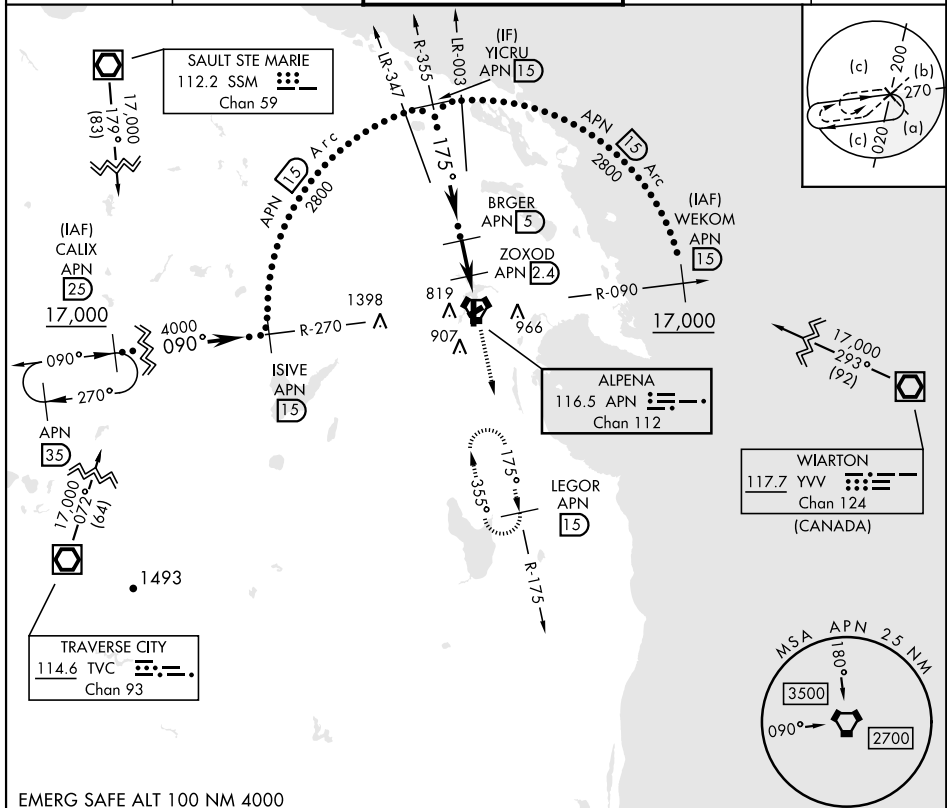
HI-TACAN RWY 19

VORTAC APN 116.5 Chan 112	APCH CRS 175°	Rwy Idg TDZE Arprt Elev 9001 683 690	[USAF]	ALPENA COUNTY RGNL (KAPN)
---	-------------------------	--	--------	---------------------------

DME required

MISSED APPROACH: Climb to 5000 on APN R-175 to LEGOR (15 DME) and hold, continue climb in hold to 5000.

ATIS ★ 120.675 327.05	ALPENA APP CON 128.425 379.3	ALPENA TOWER ★ 121.35 (CTAF) 0 318.1	GND CON 121.9 275.8	UNICOM 122.95
---------------------------------	--	--	-------------------------------	-------------------------



EC-1, 16 APR 2026 to 14 MAY 2026

EC-1, 16 APR 2026 to 14 MAY 2026

EMERG SAFE ALT 100 NM 4000

CATEGORY	C	D	E
	1140-1 3/8	457 (500-1 3/8)	
CIRCLING	1220-1 1/2 530 (600-1 1/2)	1280-2 590 (600-2)	1320-2 1/4 630 (700-2 1/4)

ELEV	690	TDZE	683
APN	R-175	APN	15
TWR	768		
REIL	7,25, and 19		

ALPENA, MICHIGAN
Amdt 5C 13AUG20

45°05'N-83°34'W

ALPENA COUNTY RGNL (KAPN)

HI-TACAN RWY 19