

ALPENA, MICHIGAN

HI-VOR or TACAN RWY 1

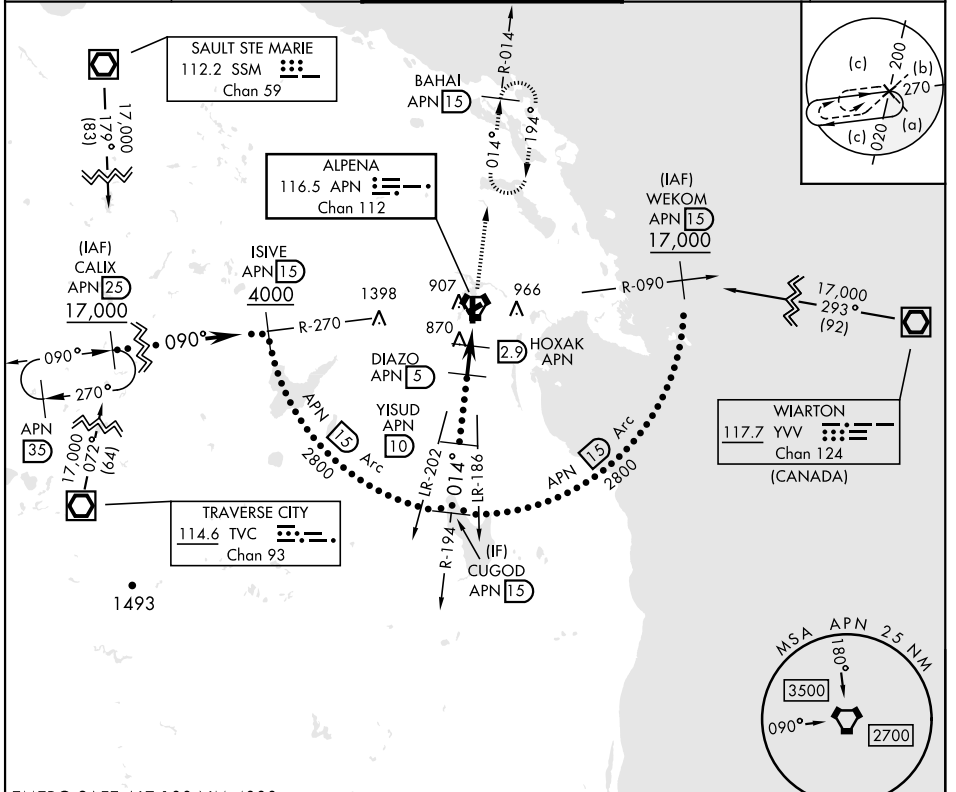
VORTAC APN 116.5 Chan 112	APCH CRS 014°	Rwy Idg TDZE Arprt Elev 9001 685 690	[USAF]	ALPENA COUNTY RGNL (KAPN)
---	-------------------------	--	--------	---------------------------

DME required

MALSRL  MISSED APPROACH: Climb to 5000 on APN R-014 to BAHAI 15 DME and hold, continue climb in hold to 5000.

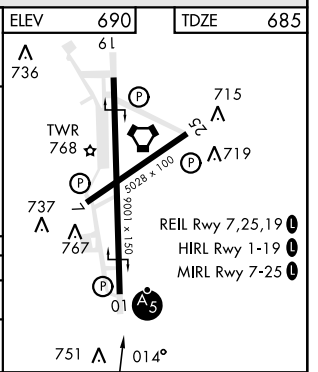
***When ALS inop, increase vis to 1 3/8 miles.**

ATIS ★ 120.675 327.05	ALPENA APP CON 128.425 379.3	ALPENA TOWER ★ 121.35 (CTAF) 0 318.1	GND CON 121.9 275.8	UNICOM 122.95
---------------------------------	--	--	-------------------------------	-------------------------



EMERG SAFE ALT 100 NM 4000

	CUGOD APN 15	YISUD APN 10	DIAZO APN 5	HOXAK APN 2.9	WUDIM APN 1.6	APN VORTAC	BAHAI APN 15	ELEV 690	TDZE 685
	2800	2800	2000	1340	1340		5000	61	
			01.4°	3.14° TCH 52			R-014	736	
				2.1 NM	1.3 NM	0.5		737	
CATEGORY	C		D		E			767	
S-1 *	1140-7/8		455 (500-7/8)					751	
CIRCLING	1220-1 1/2 530 (600-1 1/2)		1280-2 590 (600-2)		1320-2 1/4 630 (700-2 1/4)			751	01.4°



ALPENA, MICHIGAN

45°05'N - 83°34'W

ALPENA COUNTY RGNL (KAPN)

Amdt 1C 13AUG20

HI-VOR or TACAN RWY 1

EC-1, 16 APR 2026 to 14 MAY 2026

EC-1, 16 APR 2026 to 14 MAY 2026