

WAAS CH <b>53717</b> <b>W19A</b>	APP CRS <b>187°</b>	Rwy Ldg TDZE Apt Elev	<b>9001</b> <b>683</b> <b>690</b>
--	------------------------	-----------------------------	---

# RNAV (GPS) RWY 19

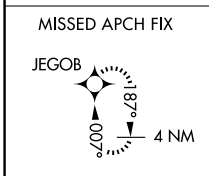
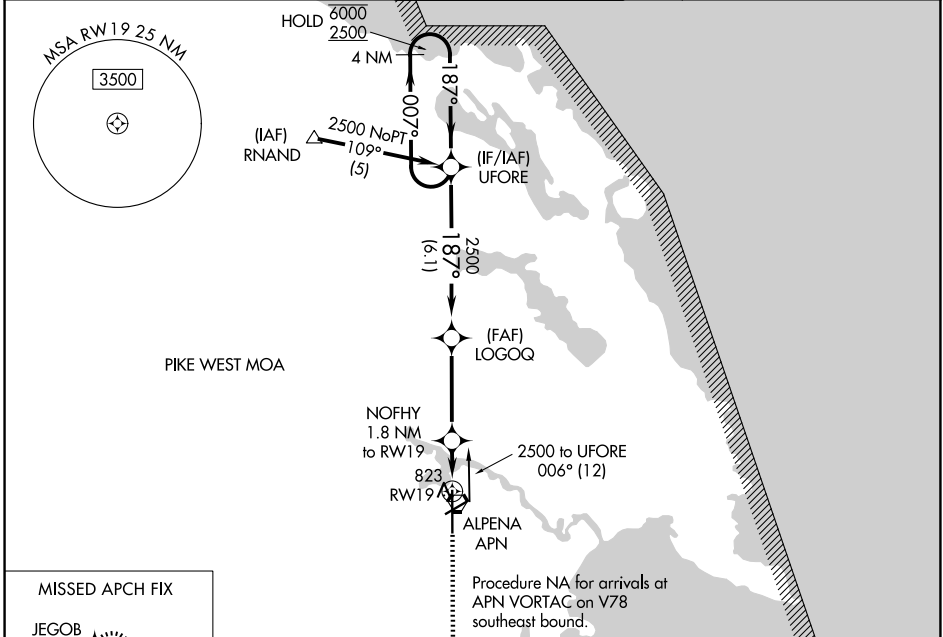
ALPENA COUNTY RGNL (APN)

RNP APCH.

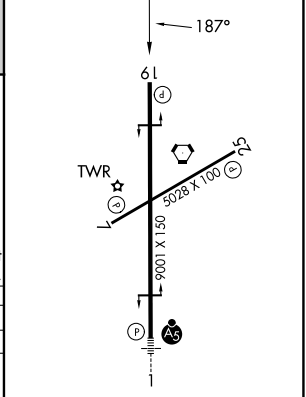
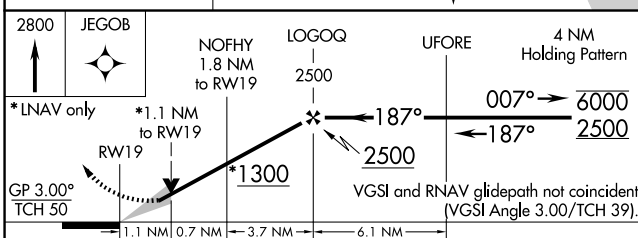
For uncompensated Baro-VNAV systems, LNAV/VNAV NA below -16°C or above 54°C.

MISSED APPROACH: Climb to 2800 direct JEGOB and hold.

ATIS <b>120.675 327.05</b>	ALPENA APP CON ★ <b>128.425 379.3</b>	ALPENA TOWER ★ <b>121.35 (CTAF) 318.1</b>	GND CON <b>121.9 275.8</b>	UNICOM <b>122.95</b>
-------------------------------	--	--	-------------------------------	-------------------------



ELEV 690	<b>D</b> TDZE 683
----------	-------------------



CATEGORY	A	B	C	D
LPV DA	933-3/4 250 (300-3/4)			
LNAV/VNAV DA	1020-1 1/4 337 (400-1 1/4)			
LNAV MDA	1080-1	397 (400-1)	1080-1 1/8	397 (400-1 1/8)
CIRCLING	1140-1	450 (500-1)	1220-1 1/2	1280-2
			530 (600-1 1/2)	590 (600-2)

HIRL Rwy 1-19  
MIRL Rwy 7-25  
REIL Rws 7, 19 and 25

EC-1, 16 APR 2026 to 14 MAY 2026

EC-1, 16 APR 2026 to 14 MAY 2026