

WAAS CH 82746	APP CRS 067°	Rwy Ldg TDZE Apt Elev	5028 690 690
-------------------------	------------------------	-----------------------------	---

RNAV (GPS) RWY 7

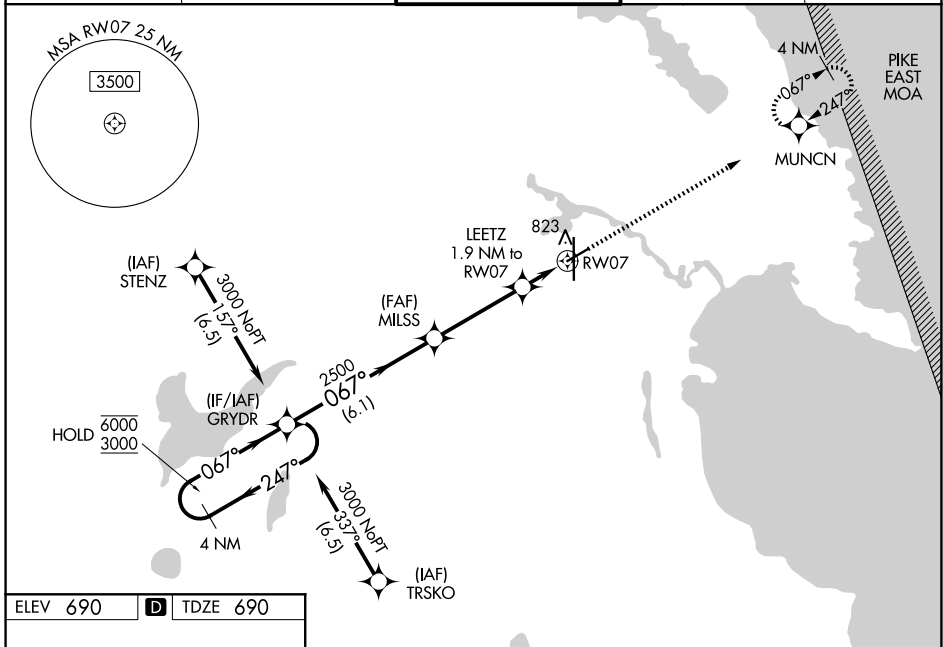
ALPENA COUNTY RGNL (APN)

RNP APCH - GPS.

⚠ Baro-VNAV and VDP NA when using PZQ altimeter setting. Rwy 7 helicopter visibility reduction below 3/4 SM NA. For uncompensated Baro-VNAV systems, LNAV/VNAV NA below -18°C or above 54°C. When local altimeter setting not received, use PZQ altimeter setting and increase LPV DA to 1007 feet, increase LNAV/VNAV DA to 1039 feet; increase all MDAs 60 feet and LNAV visibility Cat C/D 1/4 SM.

⚠ MISSED APPROACH: Climb to 3000 direct MUNCN and hold, continue climb-in-hold to 3000.

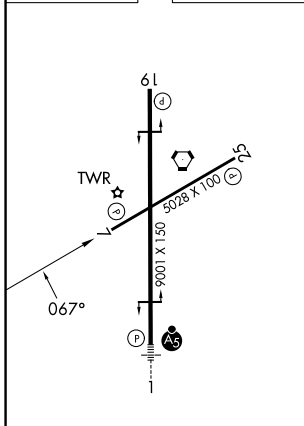
ATIS ★ 120,675 327,05	ALPENA APP CON ★ 128,425 379,3	ALPENA TOWER ★ 121,35 (CTAF) 318,1	GND CON 121,9 275,8	UNICOM 122,95
---------------------------------	--	--	-------------------------------	-------------------------



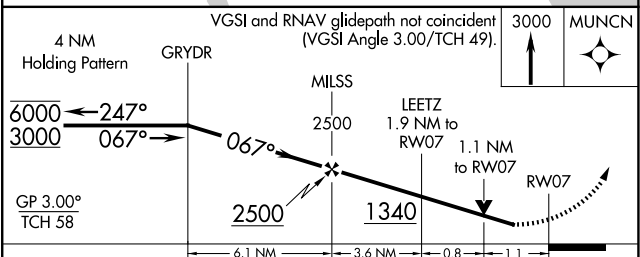
EC-1, 16 APR 2026 to 14 MAY 2026

EC-1, 16 APR 2026 to 14 MAY 2026

ELEV 690	D	TDZE 690
----------	----------	----------



- HIRL Rwy 1-19 **Ⓛ**
- MIRL Rwy 7-25 **Ⓛ**
- REIL Rwy 7, 19 and 25 **Ⓛ**



CATEGORY	A	B	C	D
LPV DA		952-1	262 (300-1)	
LNAV/VNAV DA		984-1	294 (300-1)	
LNAV MDA	1080-1	390 (400-1)	1080-1½	390 (400-1½)
CIRCLING	1140-1	450 (500-1)	1220-1½ 530 (600-1½)	1300-2 610 (700-2)