

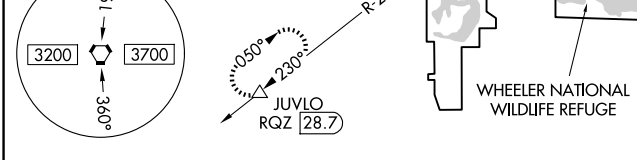
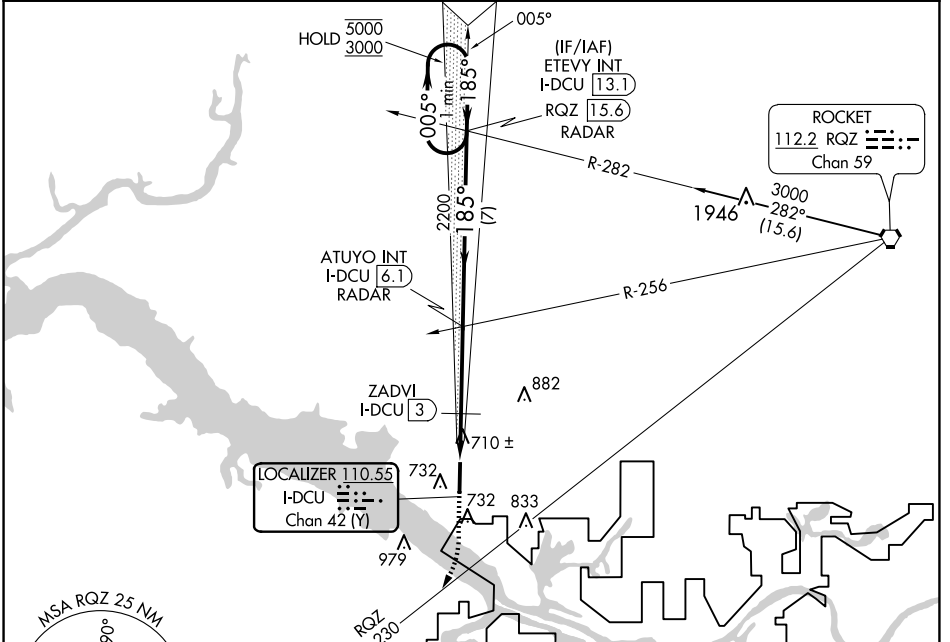
LOC/DME I-DCU <b>110.55</b> Chan 42 (Y)	APP CRS <b>185°</b>	Rwy ldg <b>6107</b> TDZE <b>592</b> Apt Elev <b>592</b>
---	------------------------	---

**ILS or LOC RWY 18**  
PRYOR FLD RGNL (DCU)

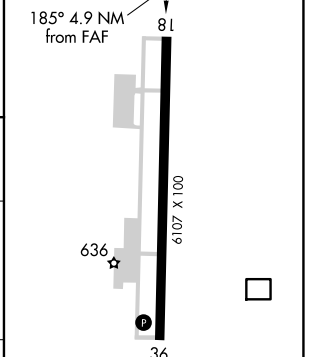
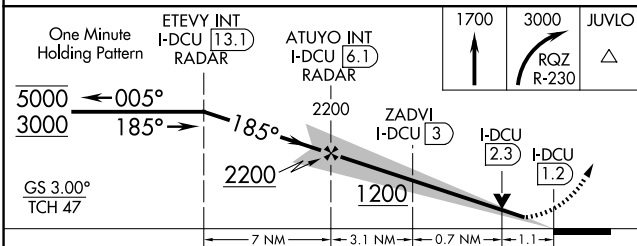
DME required.

MISSED APPROACH: Climb to 1700, then climbing right turn to 3000 on RQZ VORTAC R-230 to JUVLO/RQZ 28.7 DME and hold.

ASOS <b>118.375</b>	HUNTSVILLE APP CON* <b>118.05 239.0</b>	UNICOM <b>123.075 (CTAF) 0</b>
------------------------	--	-----------------------------------



ELEV 592	TDZE 592
----------	----------



CATEGORY	A	B	C	D
S-ILS 18		792- <sup>3</sup> / <sub>4</sub>	200 (200- <sup>3</sup> / <sub>4</sub> )	
S-LOC 18	980-1	388 (400-1)	980-1 <sup>1</sup> / <sub>8</sub>	388 (400-1 <sup>1</sup> / <sub>8</sub> )
CIRCLING	1040-1	1060-1	1340-2 <sup>1</sup> / <sub>4</sub>	1340-2 <sup>1</sup> / <sub>2</sub>
	448 (500-1)	468 (500-1)	748 (800-2 <sup>1</sup> / <sub>4</sub> )	748 (800-2 <sup>1</sup> / <sub>2</sub> )

FAF to MAP 4.9 NM					
Knots	60	90	120	150	180
Min:Sec	4:54	3:16	2:27	1:58	1:38

SE-4, 16 APR 2026 to 14 MAY 2026

SE-4, 16 APR 2026 to 14 MAY 2026