

WAAS CH 82200 W18A	APP CRS 185°	Rwy Idg TDZE Apt Elev	6107 592 592
--	------------------------	-----------------------------	---

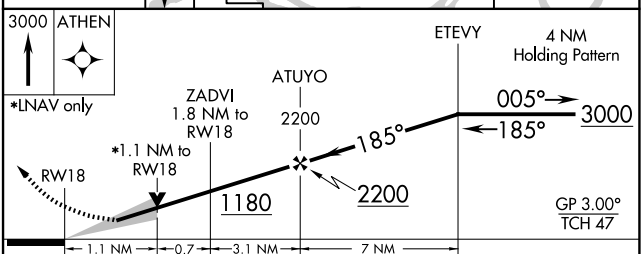
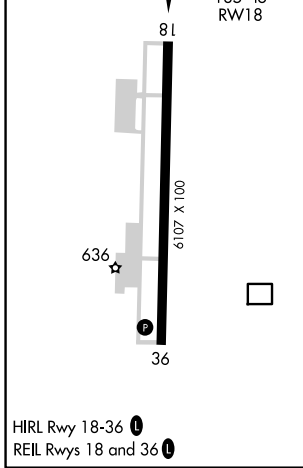
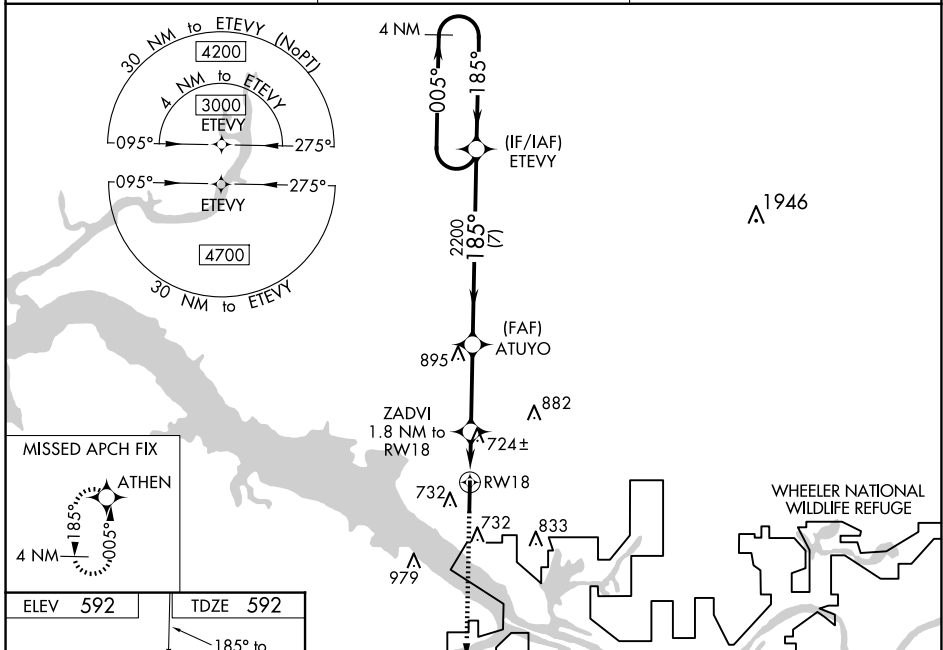
RNAV (GPS) RWY 18

PRYOR FLD RGNL (DCU)

⚠ DME/DME RNP-0.3 NA. When local altimeter setting not received, use Huntsville Intl-Carl T Jones Fld altimeter setting: increase LPV DA to 817 and LNAV/VNAV DA to 920 and all visibilities 1/8 mile. Increase all MDA 40 feet and LNAV Cat C and D visibility 1/8 mile. VDP and Baro-VNAV NA when using Huntsville Intl-Carl T Jones Fld altimeter setting. For uncompensated Baro-VNAV systems, LNAV/VNAV NA below -11°C (13°F) or above 54°C (130°F).

MISSED APPROACH:
Climb to 3000 direct
ATHEN and hold.

ASOS 118.375	HUNTSVILLE APP CON* 118.05 239.0	UNICOM 123.075 (CTAF) 0
------------------------	--	-----------------------------------



CATEGORY	A	B	C	D
LPV DA		792-3/4	200 (200-3/4)	
LNAV/VNAV DA		895-1	303 (400-1)	
LNAV MDA	980-1	388 (400-1)	980-1 1/8	388 (400-1 1/8)
C CIRCLING	1040-1 448 (500-1)	1060-1 468 (500-1)	1340-2 1/4 748 (800-2 1/4)	1340-2 1/2 748 (800-2 1/2)

SE-4, 16 APR 2026 to 14 MAY 2026

SE-4, 16 APR 2026 to 14 MAY 2026