

WAAS CH <b>65799</b> <b>W06A</b>	APP CRS <b>057°</b>	Rwy Ldg TDZE <b>1212</b> Apt Elev <b>1212</b>	<b>5000</b>
--	------------------------	---	-------------

# RNAV (GPS) RWY 6

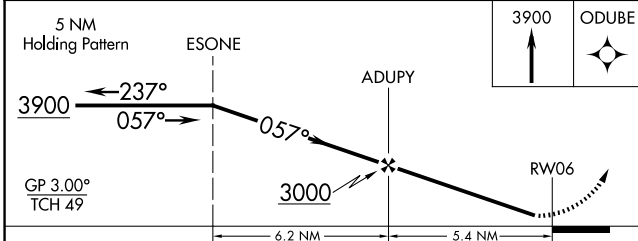
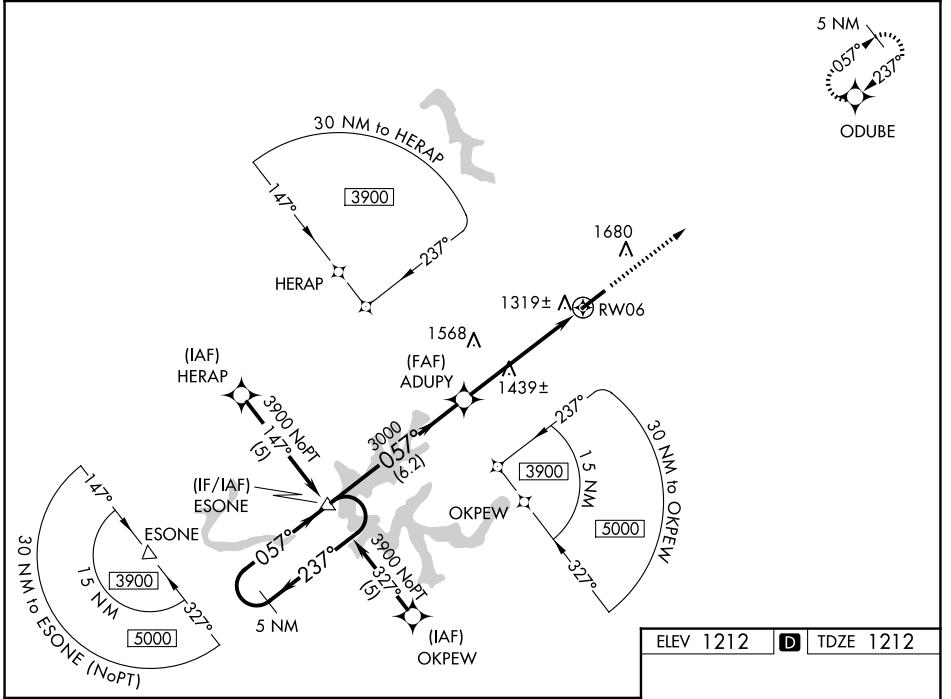
LONDON/CORBIN/MAGEE (LOZ)

RNP APCH.

▼ Visibility reduction by helicopters NA. When local altimeter setting not received, use Somerset altimeter setting: increase LPV DA to 1566 feet and visibility all Cats ½ SM; increase LNAV/VNAV DA to 1702 feet and visibility all Cats ½ SM; increase all MDAs 100 feet and LNAV Cat C visibility ¼ SM, Cat D visibility ½ SM, and Circling Cat C/D visibility ¼ SM. For uncompensated Baro-VNAV systems, LNAV/VNAV NA below -17° C or above 46° C. Baro-VNAV and VDP NA when using Somerset altimeter setting.

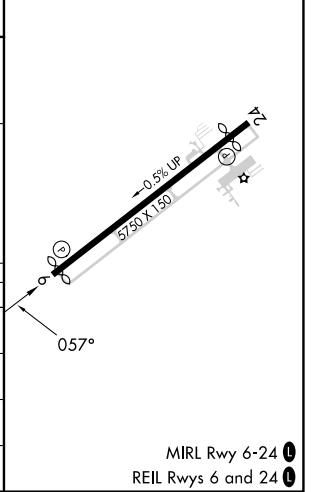
MISSED APPROACH: Climb to 3900 direct ODUBE and hold.

ASOS <b>119.075</b>	INDIANAPOLIS CENTER <b>124.625 371.925</b>	UNICOM <b>123.0 (CTAF) 0</b>
------------------------	---	---------------------------------



ELEV 1212	<b>D</b> TDZE 1212
-----------	--------------------

CATEGORY	A	B	C	D
LPV DA		1466-1	254 (300-1)	
LNAV/VNAV DA		1602-1¼	390 (400-1¼)	
LNAV MDA	1720-1	508 (600-1)	1720-1½	508 (600-1½)
CIRCLING	1780-1 568 (600-1)	2040-1¼ 828 (900-1¼)	2040-2½ 828 (900-2½)	2040-2¾ 828 (900-2¾)



MIRL Rwy 6-24 **0**  
REIL Rwy 6 and 24 **0**

SE-1, 16 APR 2026 to 14 MAY 2026

SE-1, 16 APR 2026 to 14 MAY 2026