

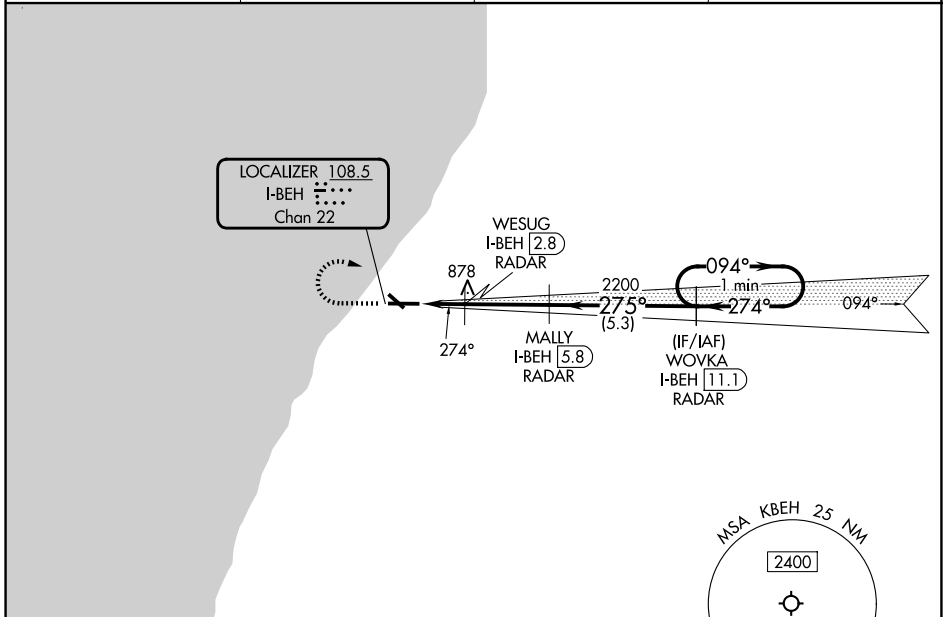
LOC I-BEH 108.5 Chan 22	APP CRS 274°	Rwy Ldg TDZE Apt Elev	6006 649 649
---	------------------------	-----------------------------	---

ILS or LOC RWY 28

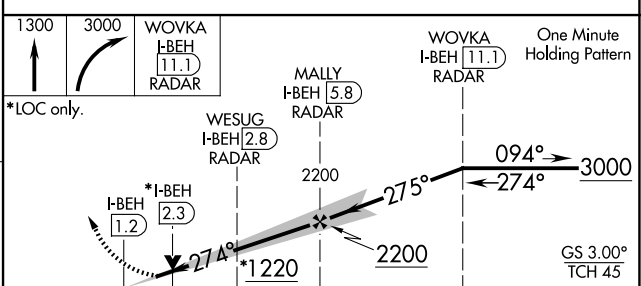
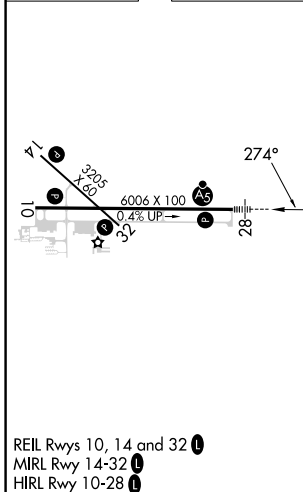
SOUTHWEST MICHIGAN RGNL (BEH)

RNAV 1-GPS required.		MALSR 	MISSED APPROACH: Climb to 1300 then climbing right turn to 3000 direct WOVKA and hold.
DME Required for LOC only.			
<p> Circling Rwy 14 and 32 NA at night.</p> <p> NA For inop ALS, increase S-LOC 28 Cat C/D visibility to 1 1/8 SM.</p>			

ASOS 121.55	SOUTH BEND APP CON* 118.55 257.8	CLNC DEL 119.7	UNICOM 123.0 (CTAF) 0
-----------------------	--	--------------------------	---------------------------------



ELEV 649	TDZE 649
-----------------	-----------------



CATEGORY	A	B	C	D
S-ILS 28		849-1/2	200 (200-1/2)	
S-LOC 28	1060-1/2	411 (500-1/2)	1060-3/4	411 (500-3/4)
CIRCLING	1140-1 491 (500-1)	1160-1 511 (600-1)	1300-1 3/4 651 (700-1 3/4)	1340-2 691 (700-2)

EC-1, 16 APR 2026 to 14 MAY 2026

EC-1, 16 APR 2026 to 14 MAY 2026