

WAAS CH 86912 W10A	APP CRS 094°	Rwy Ldg TDZE 631 Apt Elev 649
--	------------------------	---

RNAV (GPS) RWY 10

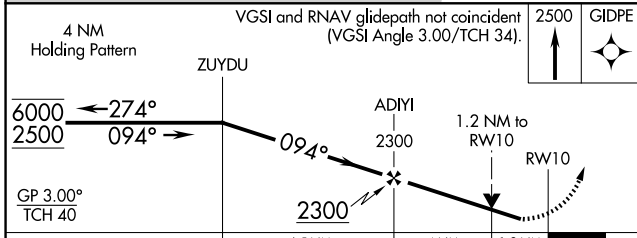
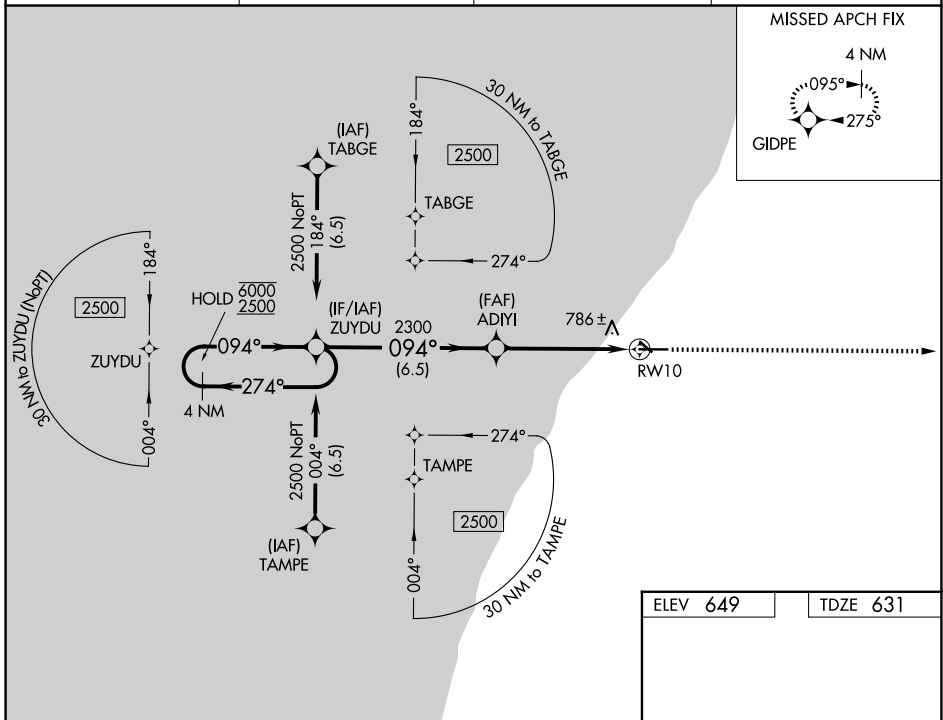
SOUTHWEST MICHIGAN RGNL (BEH)

RNP APCH - GPS.

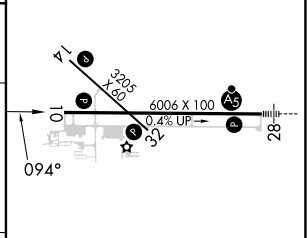
⚠ Rwy 10 helicopter visibility reduction below $\frac{3}{4}$ SM NA. For uncompensated Baro-VNAV systems, LNAV/VNAV NA below -20°C or above 54°C. Baro-VNAV and VDP NA when using LWA altimeter setting. When local altimeter setting not received, use LWA altimeter setting: increase LPV DA to 917 feet and all visibilities $\frac{1}{8}$ SM; increase LNAV/VNAV DA to 1080 feet and all visibilities $\frac{1}{4}$ SM; increase all MDAs 40 feet and LNAV visibility Cats C and D $\frac{1}{2}$ SM.

MISSED APPROACH:
Climb to 2500 direct GIDPE and hold.

ASOS 121.55	SOUTH BEND APP CON* 118.55 257.8	CLNC DEL 119.7	UNICOM 123.0 (CTAF) 0
-----------------------	--	--------------------------	---------------------------------



ELEV 649	TDZE 631
----------	----------



CATEGORY	A	B	C	D
LPV DA		881- $\frac{3}{4}$	250 (300- $\frac{3}{4}$)	
LNAV/VNAV DA		1040-1 $\frac{1}{8}$	409 (400-1 $\frac{1}{8}$)	
LNAV MDA	1040-1	409 (400-1)	1040-1 $\frac{1}{8}$	409 (400-1 $\frac{1}{8}$)

REIL Rwy 10, 14 and 32 **0**
MIRL Rwy 14-32 **0**
HIRL Rwy 10-28 **0**

EC-1, 16 APR 2026 to 14 MAY 2026

EC-1, 16 APR 2026 to 14 MAY 2026