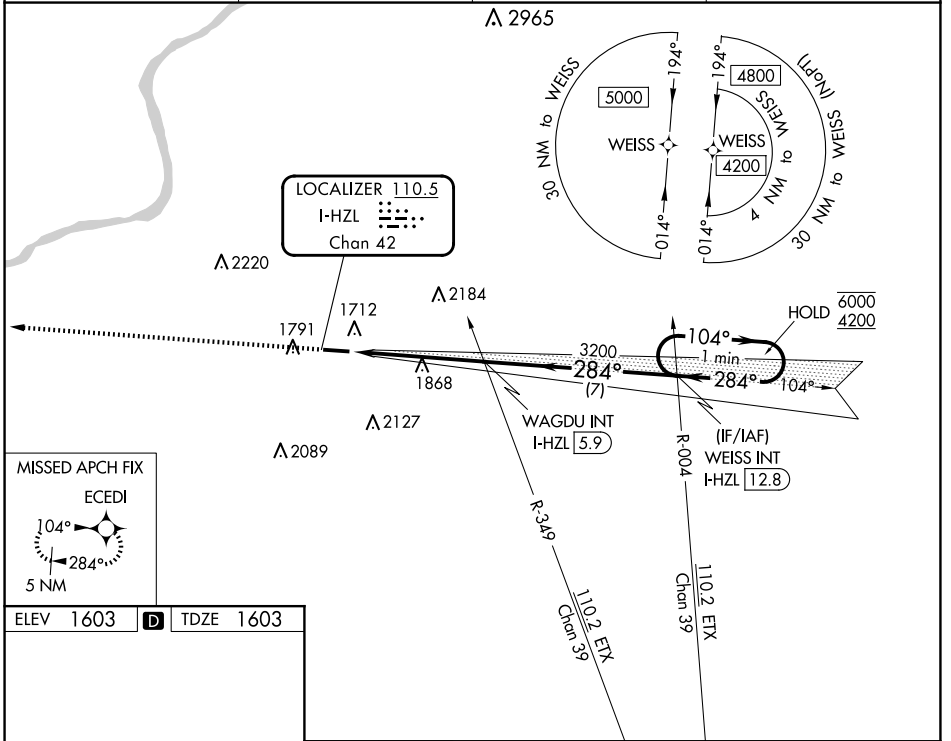


LOC/DME I-HZL <b>110.5</b> Chan <b>42</b>	APP CRS <b>284°</b>	Rwy Ldg TDZE Apt Elev	<b>4898</b> <b>1603</b> <b>1603</b>
---	------------------------	-----------------------------	---

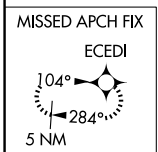
**LOC RWY 28**  
HAZLETON RGNL (HZL)

RNAV 1-GPS required for procedure entry. RNAV 1-GPS required from MAP to ECEDI.		MALS ☉	MISSED APPROACH: Climb to 4400 direct ECEDI and hold.
<p>▼ Rwy 28 helicopter visibility reduction below 3/4 SM NA. Inop table does not apply to Cats A/B. For inop ALS, increase Cat C/D visibility to 1 1/8 SM.</p> <p>▲ NA</p>			
AWOS-3 <b>119.975</b>	WILKES-BARRE APP CON <b>126.3 256.7</b>	CLNC DEL <b>121.7</b>	UNICOM <b>123.0 (CTAF) 0</b>

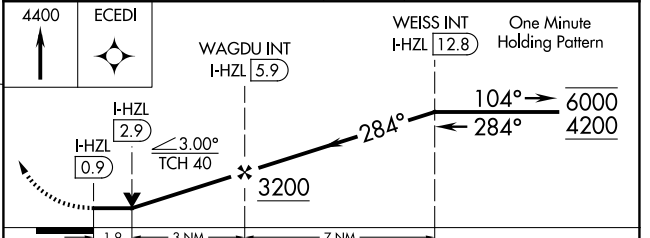
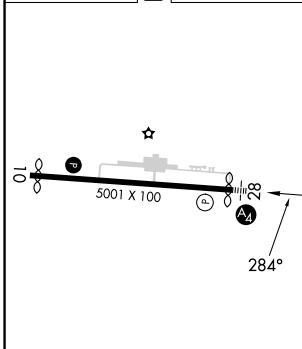


NE-4, 16 APR 2026 to 14 MAY 2026

NE-4, 16 APR 2026 to 14 MAY 2026



ELEV <b>1603</b>	<b>D</b>	TDZE <b>1603</b>
------------------	----------	------------------



REIL Rwy 10	MRL Rwy 10-28	FAF to MAP 4.9 NM	Knots		60	90	120	150	180
			Min:Sec		4:54	3:16	2:27	1:58	1:38
CATEGORY	A	B	C	D					
S-LOC 28	2280-1	677 (700-1)	2280-1 3/4	677 (700-1 3/4)					
CIRCLING	2280-1	2400-1	2480-2 1/2	2520-3					
	677 (700-1)	797 (800-1)	877 (900-2 1/2)	917 (1000-3)					