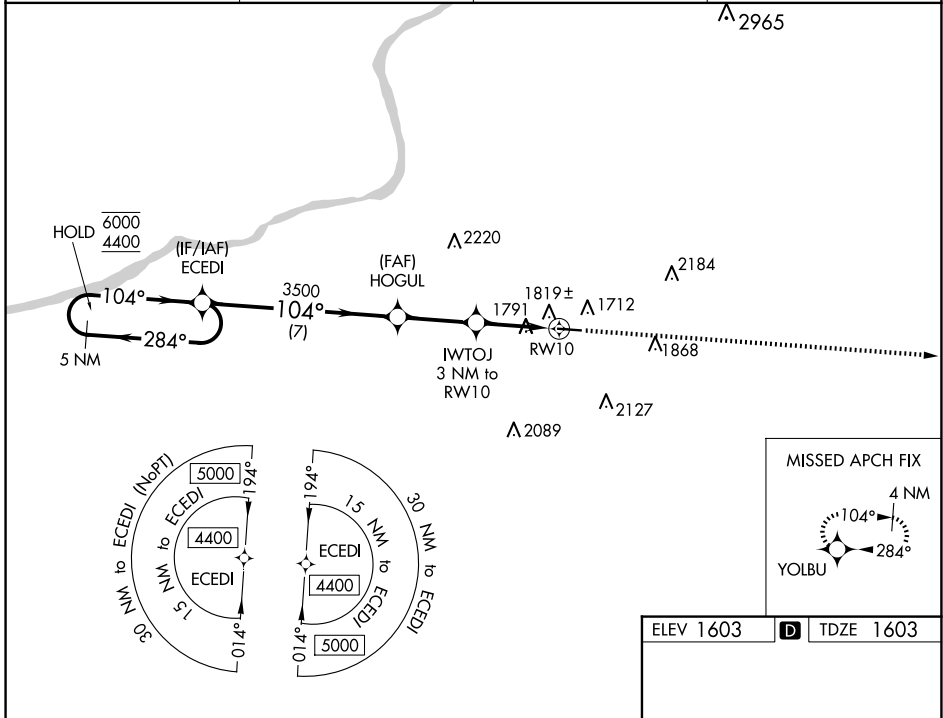


WAAS CH 86240 W10A	APP CRS 104°	Rwy Ldg TDZE Apt Elev	4801 1603 1603
--	------------------------	-----------------------------	---

RNAV (GPS) RWY 10

HAZLETON RGNL (HZL)

RNP APCH.			MISSED APPROACH: Climb to 4600 direct YOLBU and hold.
<p>▽ Rwy 10 helicopter visibility reduction below 3/4 SM NA. For uncompensated Baro-VNAV systems, LNAV/VNAV NA below -18°C or above 54°C.</p>			
AWOS-3 119.975	WILKES-BARRE APP CON 126.3 256.7	CLNC DEL 121.7	UNICOM 123.0 (CTAF) 0



NE-4, 16 APR 2026 to 14 MAY 2026

NE-4, 16 APR 2026 to 14 MAY 2026

5 NM Holding Pattern ECEDI		VGSi and RNAV glidepath not coincident (VGSi Angle 3.50/TCH 46).		4600	YOLBU
6000 ← 284° 4400 → 104°		HOGUL 3500		↑	✧
GP 3.00° TCH 56		IWTOJ 3 NM to RWY 10		*LNAV only.	
7 NM		2.8 NM		*1.4 NM to RWY 10	
A		B		C	
CATEGORY	A	B	C	D	
LPV DA		2059-1 ³ / ₈	456 (500-1 ³ / ₈)		
LNAV/VNAV DA		2104-1 ³ / ₈	501 (600-1 ³ / ₈)		
LNAV MDA	2080-1	477 (500-1)	2080-1 ³ / ₈	477 (500-1 ³ / ₈)	
CIRCLING	2140-1	2400-1	2480-2 ¹ / ₂	2520-3	
	537 (600-1)	797 (800-1)	877 (900-2 ¹ / ₂)	917 (1000-3)	
REIL Rwy 10 0					MIRL Rwy 10-28 0