

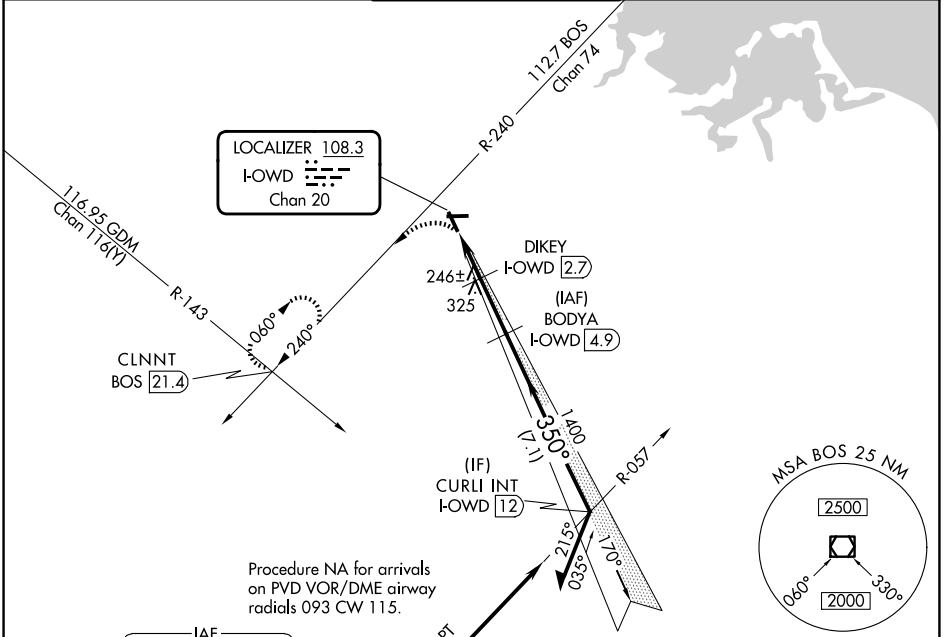
LOC/DME I-OWD 108.3 Chan 20	APP CRS 350°	Rwy Ldg TDZE Apt Elev	4007 49 49
--	------------------------	-----------------------------	---------------------------------------

LOC RWY 35

NORWOOD MEML (OWD)

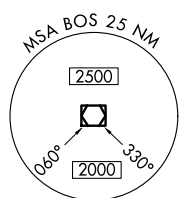
DME required.	MALSF	MISSED APPROACH: Climbing left turn to 2000 on heading 200 and on BOS VOR/DME R-240 to CLNNT INT/ BOS VOR/DME 21.4 DME and hold.
Helicopter visibility reduction below 3/4 SM NA. Circling NA at night. For inop ALS, increase S-35 Cat C/D visibility to 1 3/8 SM. 		

ATIS 119.95	BOSTON APP CON 124.1 263.1	NORWOOD TOWER ★ 126.0 (CTAF) 0	GND CON 121.8	CLNC DEL 121.8
-----------------------	--------------------------------------	--	-------------------------	--------------------------



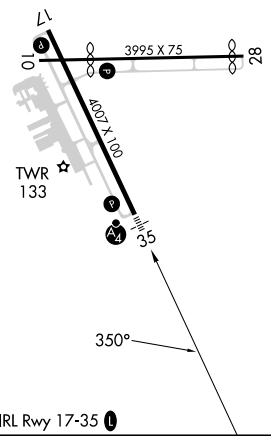
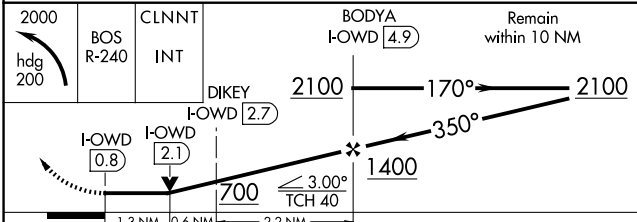
NE-1, 16 APR 2026 to 14 MAY 2026

NE-1, 16 APR 2026 to 14 MAY 2026



IAF PROVIDENCE 115.6 PVD (Chan 103)

ELEV 49	D	TDZE 49
---------	---	---------



CATEGORY	A	B	C	D
S-LOC 35	500-3/4 451 (500-3/4)		500-1 451 (500-1)	
CIRCLING	600-1 551 (600-1)	700-1 651 (700-1)	1220-3 1171 (1200-3)	