

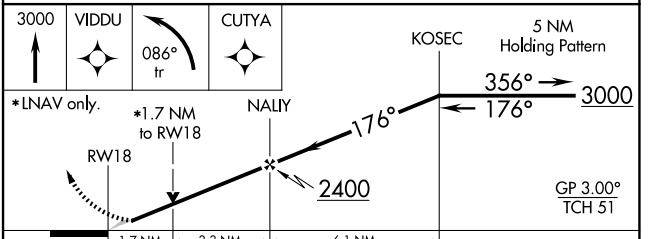
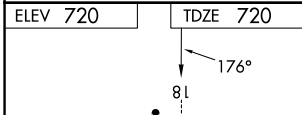
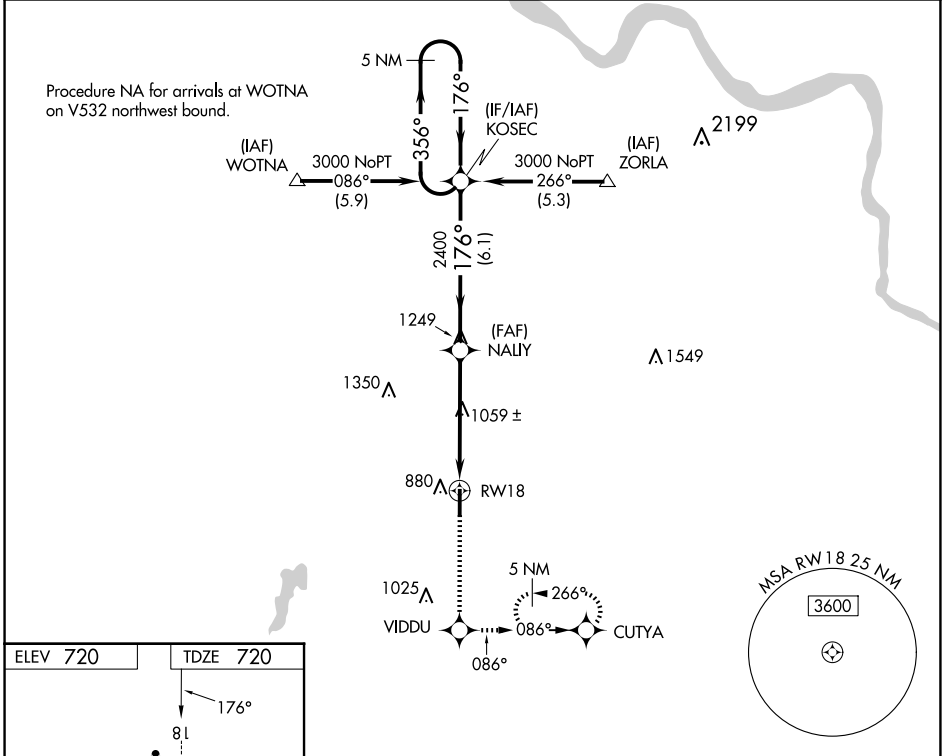
WAAS CH <b>82105</b> <b>W18A</b>	APP CRS <b>176°</b>	Rwy Idg <b>5150</b> TDZE <b>720</b> Apt Elev <b>720</b>
--	------------------------	---

# RNAV (GPS) RWY 18

OKMULGEE RGNL/PAUL AND BETTY ABBOTT FLD (OKM)

<p><b>⚠</b> When local altimeter setting not received, use Tulsa Intl altimeter setting: Increase LPV DA to 1050 feet; increase all MDAs 80 feet and visibility Cat C ¼ SM. DME/DME RNP-0.3 NA. VDP NA with Tulsa Intl altimeter setting.</p>	<p>MALSR</p>	<p>MISSED APPROACH: Climb to 3000 direct VIDDU and left turn via 086° track to CUTYA and hold, continue climb-in-hold to 3000.</p>
---	--------------	--

AWOS-3PT <b>118.225</b>	TULSA APP CON <b>119.85 338.3</b>	UNICOM <b>123.0 (CTAF) 0</b>
----------------------------	--------------------------------------	---------------------------------



CATEGORY	A	B	C	D		
LPV DA	970-½			250 (300-½)	NA	
LNAV MDA	1320-½		600 (600-½)	1320-1	600 (600-1)	NA
<b>C</b> CIRCLING	1320-1	1340-1	1340-1¾	620 (700-1¼)	NA	

SC-1, 16 APR 2026 to 14 MAY 2026

SC-1, 16 APR 2026 to 14 MAY 2026