

WAAS CH <b>58333</b> <b>W18A</b>	APP CRS <b>184°</b>	Rwy Ldg TDZE <b>794</b> Apt Elev <b>809</b>
--	------------------------	---

# RNAV (GPS) RWY 18

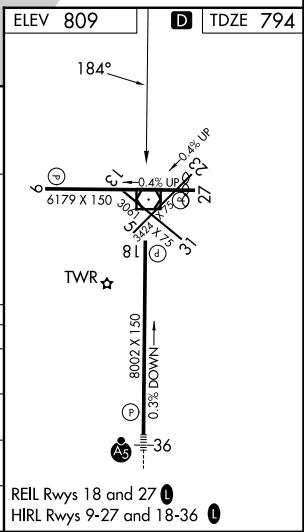
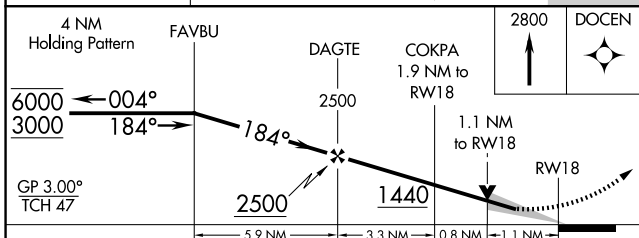
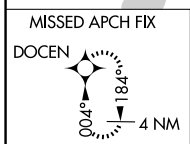
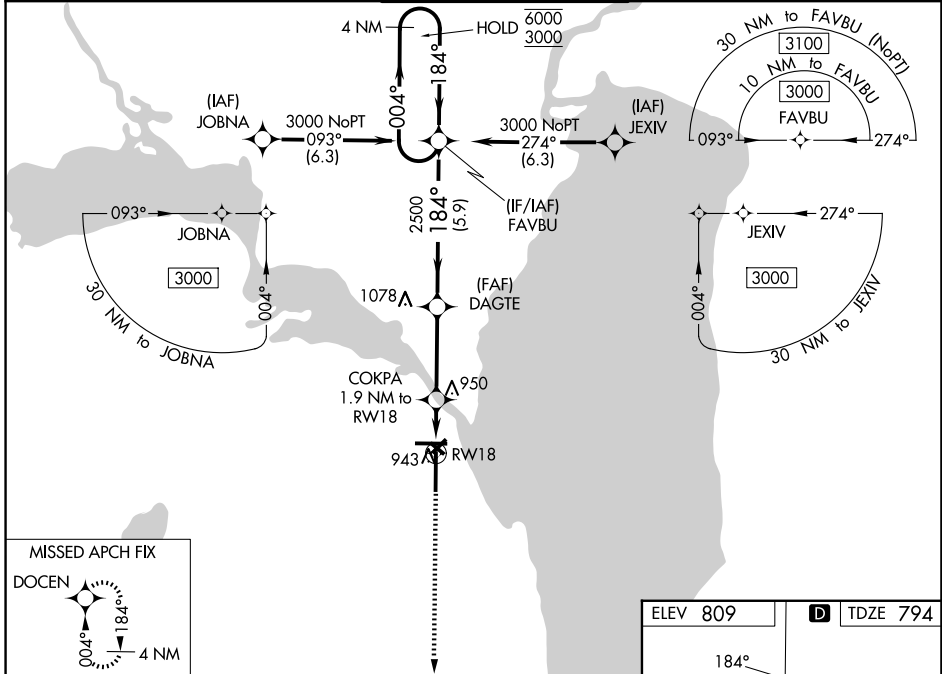
WITTMAN RGNL (OSH)

RNP APCH - GPS.

▼ For uncompensated Baro-VNAV systems, LNAV/VNAV NA below -21°C or above 54°C. Baro-VNAV and VDP NA when using FLD altimeter setting. Circling Rwy 5, 13, 23, 31 NA at night. When local altimeter setting not received, use FLD altimeter setting and increase LPV DA to 1077 feet, LNAV/VNAV DA to 1155 feet, and all MDAs 40 feet; increase LPV visibility all Cats 1/8 SM, LNAV visibility Cats C and D 1/4 SM, and Circling visibility Cat D 1/4 SM.

MISSED APPROACH:  
Climb to 2800 direct  
DOCEN and hold.

ATIS <b>125.9</b>	MILWAUKEE APP CON <b>127.0 263.075</b>	OSHKOSH TOWER ★ <b>118.5 (CTAF) 290.9</b>	GND CON <b>132.3</b>	UNICOM <b>122.95</b>
----------------------	---	--	-------------------------	-------------------------



CATEGORY	A	B	C	D
LPV DA		1044-3/4	250 (300-3/4)	
LNAV/ VNAV DA		1122-1	328 (400-1)	
LNAV MDA	1200-1	406 (400-1)	1200-1/8	406 (400-1/8)
CIRCLING	1280-1 471 (500-1)	1300-1 491 (500-1)	1360-1/2 551 (600-1/2)	1440-2 631 (700-2)

REIL Rwy 18 and 27  
HIRL Rwy 9-27 and 18-36

EC-3, 16 APR 2026 to 14 MAY 2026

EC-3, 16 APR 2026 to 14 MAY 2026