

WAAS CH <b>93534</b> <b>W27A</b>	APP CRS <b>274°</b>	Rwy Ldg TDZE <b>786</b> Apt Elev <b>809</b>	<b>5648</b> <b>786</b> <b>809</b>
--	------------------------	---	---

# RNAV (GPS) RWY 27

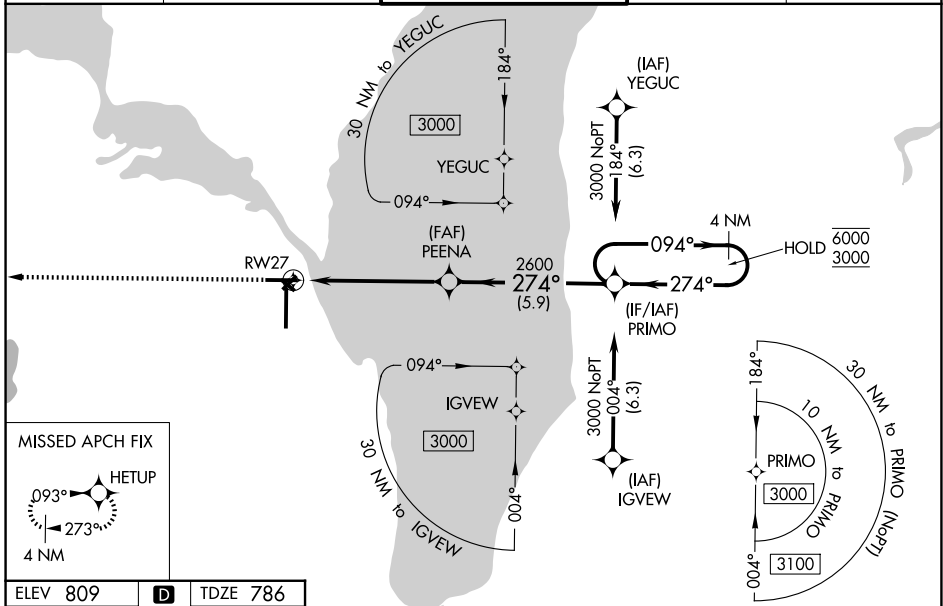
WITTMAN RGNL (OSH)

RNP APCH - GPS.

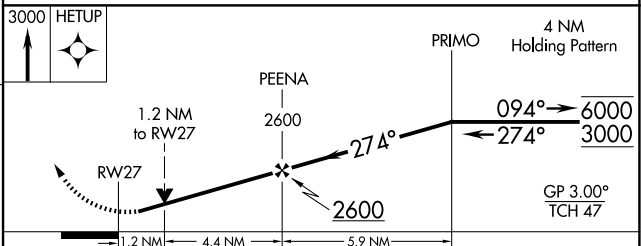
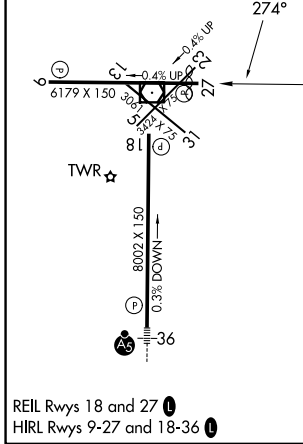
**⚠** For uncompensated Baro-VNAV systems, LNAV/VNAV NA below -22°C or above 54°C. Rwy 27 helicopter visibility reduction below 3/4 SM NA. Circling Rwy 5, 13, 23, 31 NA at night. Baro-VNAV and VDP NA when using FLD altimeter setting. When local altimeter setting not received, use FLD altimeter setting and increase LPV DA to 1069 feet, LNAV/VNAV DA to 1111 feet, and all MDAs 40 feet; increase LPV and LNAV/VNAV visibility all Cats 1/8 SM, LNAV visibility Cats C and D 1/4 SM, and Circling visibility Cat D 1/4 SM.

**MISSED APPROACH:**  
Climb to 3000 direct HETUP and hold.

ATIS <b>125.9</b>	MILWAUKEE APP CON <b>127.0 263.075</b>	OSHKOSH TOWER ★ <b>118.5 (CTAF) 290.9</b>	GND CON <b>132.3</b>	UNICOM <b>122.95</b>
----------------------	---	--	-------------------------	-------------------------



ELEV 809	<b>D</b>	TDZE 786
----------	----------	----------



CATEGORY	A	B	C	D
LPV DA		1036-3/4	250 (300-3/4)	
LNAV/VNAV DA		1078-7/8	292 (300-7/8)	
LNAV MDA	1200-1	414 (400-1)	1200-1 1/8	414 (400-1 1/8)
CIRCLING	1280-1 471 (500-1)	1300-1 491 (500-1)	1360-1 1/2 551 (600-1 1/2)	1440-2 631 (700-2)

EC-3, 16 APR 2026 to 14 MAY 2026

EC-3, 16 APR 2026 to 14 MAY 2026