

WAAS CH 65602 W36A	APP CRS 004°	Rwy Ldg TDZE Apt Elev	8002 809 809
--	------------------------	-----------------------------	---

RNAV (GPS) RWY 36

WITTMAN RGNL (OSH)

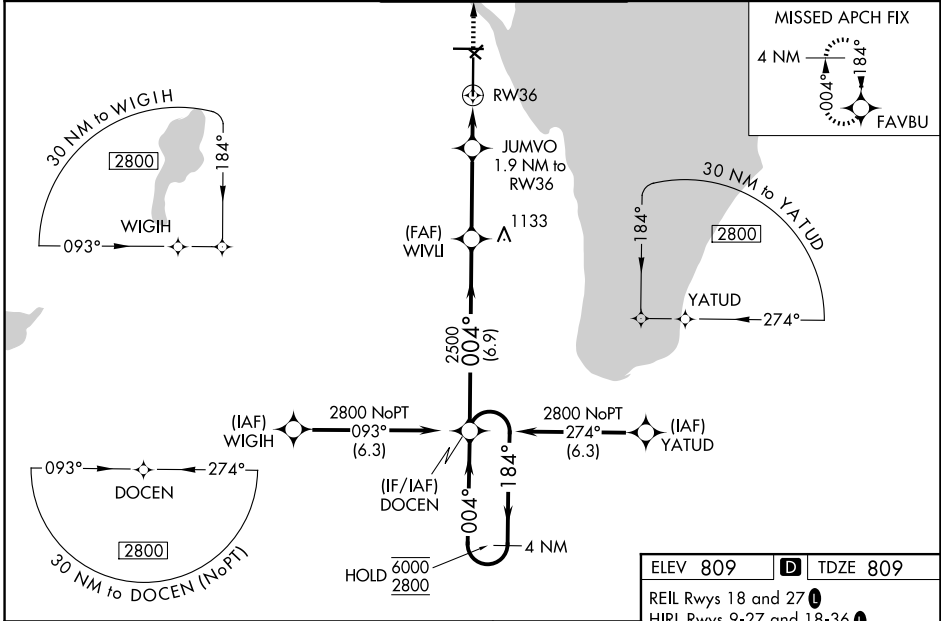
RNP APCH - GPS.

⚠ For uncompensated Baro-VNAV systems, LNAV/VNAV NA below -19°C or above 54°C. Baro-VNAV and VDP NA when using FLD altimeter setting. Circling Rwy 5, 13, 23, 31 NA at night. When local altimeter setting not received, use FLD altimeter setting and increase LPV DA to 1042 feet, LNAV/VNAV DA to 1280 feet, and all MDAs 40 feet; increase LNAV/VNAV visibility all Cats to RVR 5000, LNAV visibility Cats C and D to RVR 4000, and Circling visibility Cat D ¼ SM. *RVR 1800 authorized with use of FD or AP or HUD to DA (NA when using FLD altimeter setting).



MISSED APPROACH:
Climb to 2800 direct
FAVBU and hold.

ATIS 125.9	MILWAUKEE APP CON 127.0 263.075	OSHKOSH TOWER ★ 118.5 (CTAF) 0 290.9	GND CON 132.3	UNICOM 122.95
----------------------	---	--	-------------------------	-------------------------

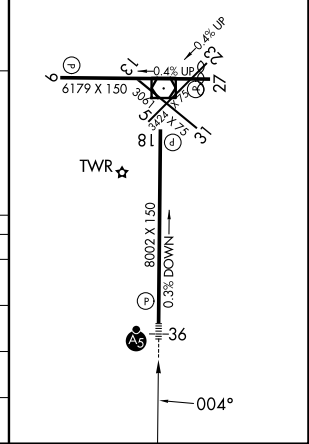
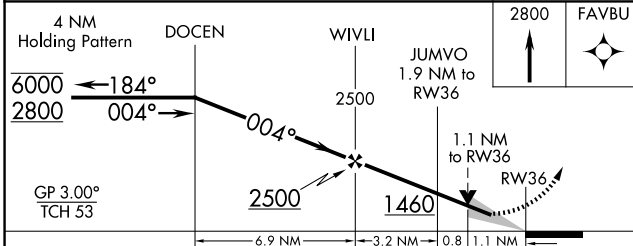


EC-3, 16 APR 2026 to 14 MAY 2026

EC-3, 16 APR 2026 to 14 MAY 2026

ELEV 809	D TDZE 809
----------	-------------------

REIL Rwy 18 and 27
HIRL Rwy 9-27 and 18-36



CATEGORY	A	B	C	D
LPV DA*	1009/24 200 (200-½)			
LNAV/VNAV DA	1200/35 391 (400-⅝)			
LNAV MDA	1200/24	391 (400-½)	1200/35	391 (400-⅝)
CIRCLING	1280-1 471 (500-1)	1300-1 491 (500-1)	1360-1½ 551 (600-1½)	1440-2 631 (700-2)