

LOC/DME I-JHW <b>109.7</b> Chan <b>34</b>	APP CRS <b>249°</b>	Rwy Ldg TDZE Apt Elev	<b>5300</b> <b>1721</b> <b>1723</b>
---	------------------------	-----------------------------	---

# ILS or LOC RWY 25

CHAUTAUQUA COUNTY/JAMESTOWN (JHW)

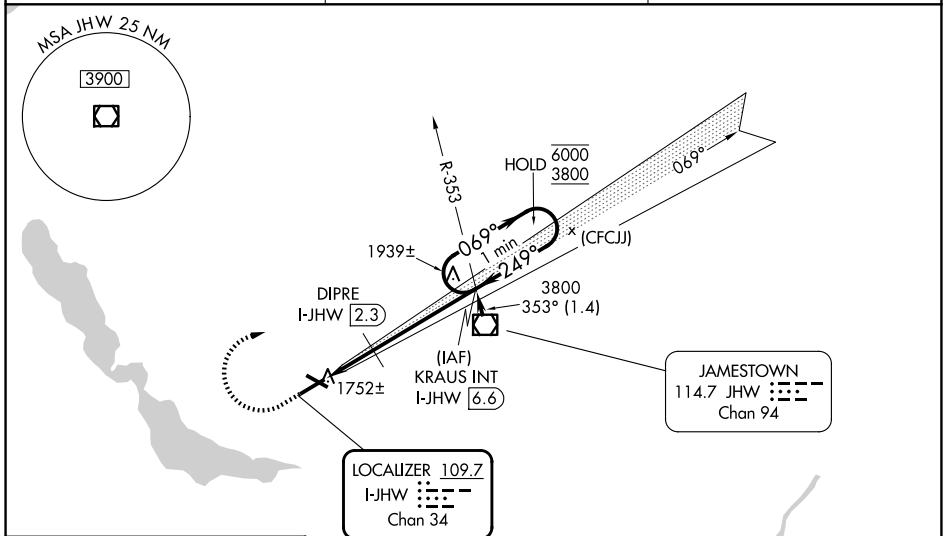
**NA** Autopilot coupled approach NA below 2420. Circling to Rwy 13/31 NA at night. VDP NA when using DKK altimeter setting. When local altimeter setting not received, use DKK altimeter setting and increase S-ILS 25 DA to 2166 feet and all visibilities  $\frac{3}{8}$  SM, increase all MDA 200 feet, increase S-LOC 25 visibilities Cat A/B  $\frac{1}{4}$  SM, Cat C/D  $\frac{1}{2}$  SM, increase Circling Cat C/D  $\frac{1}{2}$  SM, DIPRE fix minimums increase S-LOC 25 visibilities Cat C/D  $\frac{1}{2}$  SM, Circling visibilities Cat C  $\frac{1}{2}$  SM, Cat D  $\frac{3}{4}$  SM.

**MALS**  
MISSED APPROACH: Climb to 2420 then climbing right turn to 3800 on heading 125° and I-JHW localizer course NE (069°) to KRAUS INT/I-JHW 6.6 DME and hold. Continue climb-in-hold.

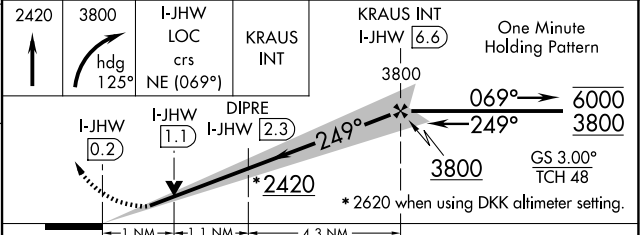
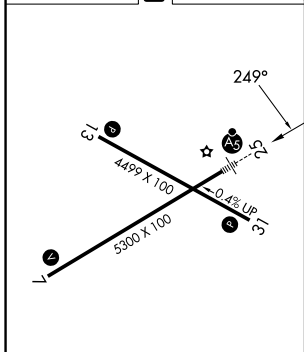
AWOS-3PT  
**118.425**

BUFFALO APP CON \*  
**126.05**

UNICOM  
**122.975** (CTAF) **0**



ELEV 1723	<b>D</b>	TDZE 1721
-----------	----------	-----------



REIL Rwy 31 **0**  
MIRL Rwy 13-31 **0**  
HIRL Rwy 7-25 **0**

FAF to MAP 6.4 NM

Knots	60	90	120	150	180
Min:Sec	6:24	4:16	3:12	2:34	2:08

CATEGORY	A	B	C	D
S-ILS 25	1971- $\frac{1}{2}$		250 (300- $\frac{1}{2}$ )	
S-LOC 25	2420- $\frac{1}{2}$	699 (700- $\frac{1}{2}$ )	2420-1 $\frac{1}{2}$	699 (700-1 $\frac{1}{2}$ )
CIRCLING	2420-1	697 (700-1)	2420-2 697 (700-2)	2420-2 $\frac{1}{4}$ 697 (700-2 $\frac{1}{4}$ )
DIPRE FIX MINIMUMS (DME REQUIRED)				
S-LOC 25	2080- $\frac{1}{2}$	359 (400- $\frac{1}{2}$ )	2080- $\frac{5}{8}$	359 (400- $\frac{5}{8}$ )
CIRCLING	2200-1	477 (500-1)	2260-1 $\frac{1}{2}$ 537 (600-1 $\frac{1}{2}$ )	2340-2 617 (700-2)

NE-2, 16 APR 2026 to 14 MAY 2026

NE-2, 16 APR 2026 to 14 MAY 2026