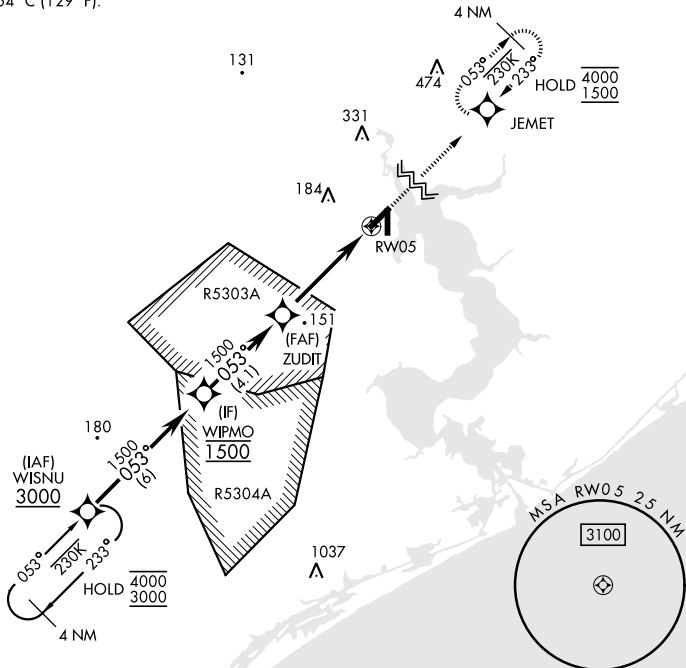


RNAV (GPS) RWY 5

WAAS Chan 77243 W05A	APCH CRS 053°	Rwy Idg TDZE 26 Arprt Elev 26	5125	[USN]	NEW RIVER MCAS (MCCUTCHEON FLD)	(KNCA)
RNP APCH			MISSED APPROACH: Climb to 1500 direct JEMET and hold.			
RADAR required						

ATIS ★ 288.325	CHERRY POINT APP CON 119.35 377.175	TOWER ★ 134.95 (CTAF) 0★ 360.2	GND CON 121.8 254.275	ASR/PAR
--------------------------	---	--	---------------------------------	---------

For uncompensated Baro-VNAV systems, LNAV/VNAV NA below -15°C (5°F) or above 54°C (129°F).



EMERG SAFE ALT 100 NM 3400

VGSi and descent angles not coincident (VGSi Angle 3.00/TCH 37)					1500	JEMET	ELEV 26	TDZE 26	
GP 3.00° TCH 50									
CATEGORY	A	B	C	D					
LPV DA	226-¾		200	(200-¾)					
LNAV/VNAV DA	308-7/8 282 (300-7/8)	319-7/8 293 (300-7/8)	327-7/8 301 (400-7/8)	338-7/8 312 (400-7/8)					
LNAV MDA	440-1	414 (500-1)	440-1 1/8	414 (500-1 1/8)					
CIRCLING	500-1	474 (500-1)	700-2 674 (700-2)	700-2 1/4 674 (700-2 1/4)					
					HIRL all rwy's 0				

RNAV (GPS) RWY 5

SE-2, 16 APR 2026 to 14 MAY 2026

SE-2, 16 APR 2026 to 14 MAY 2026