

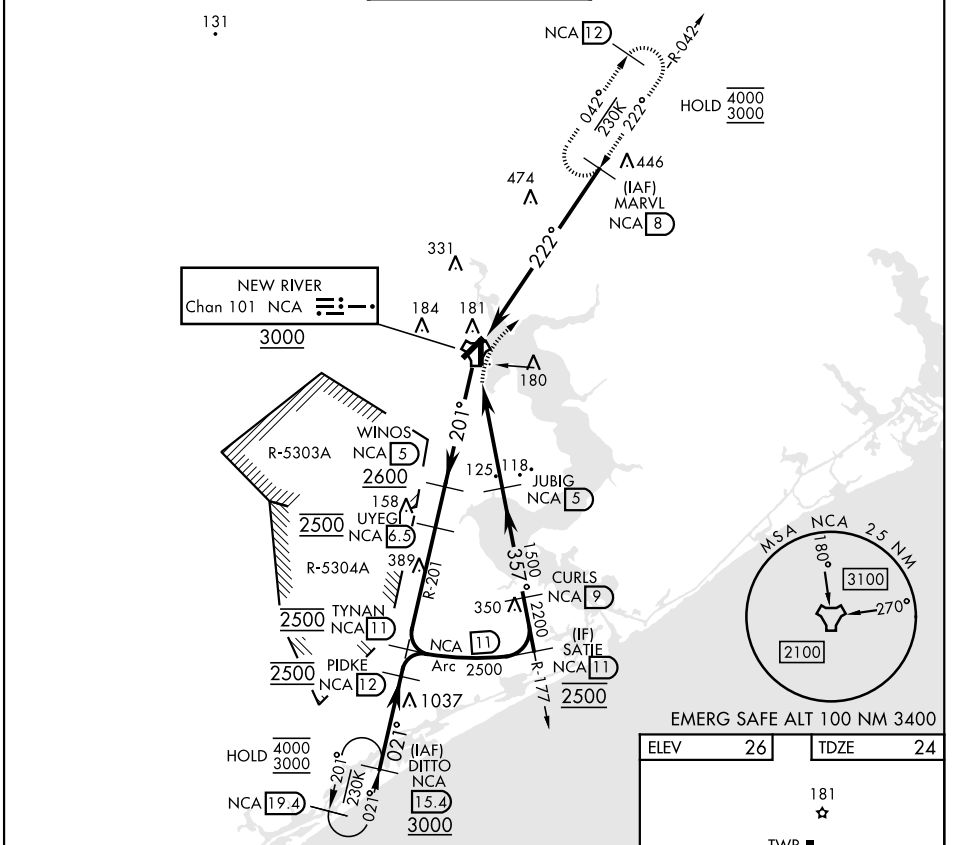
JACKSONVILLE, NORTH CAROLINA

TACAN RWY 1

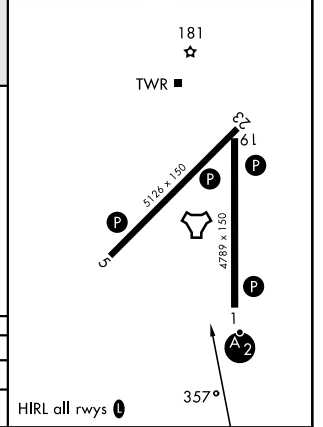
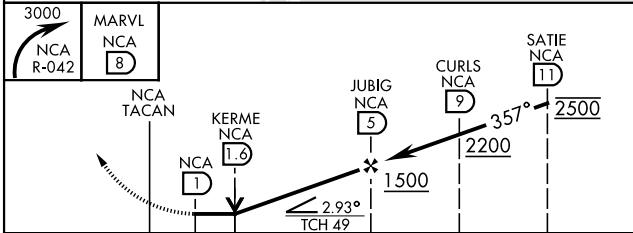
TACAN NCA Chan 101	APCH CRS 357°	Rwy ldg TDZE Arprt Elev	4789 24 26
RADAR required		SALSF 	
* When ALS inop, increase vis CAT AB to 1 mile, CAT CD to 1½ miles.			

[USN] NEW RIVER MCAS (MCCUTCHEON FLD) (KNCA)

ATIS ★ 288.325	CHERRY POINT APP CON 119.35 377.175	TOWER ★ 134.95 (CTAF) 0★ 360.2	GND CON 121.8 254.275	ASR/PAR
--------------------------	---	--	---------------------------------	---------



ELEV 26	TDZE 24
---------	---------



CATEGORY	A	B	C	D
S-1*	440-¾	416 (500-¾)	440-1	416 (500-1)
CIRCLING	500-1	474 (500-1)	700-2 674 (700-2)	700-2¼ 674 (700-2¼)

HIRL all rwys

JACKSONVILLE, NORTH CAROLINA 34° 43' N-77° 26' W NEW RIVER MCAS (MCCUTCHEON FLD) (KNCA)

Amtd 5 10JUL25

TACAN RWY 1

SE-2, 16 APR 2026 to 14 MAY 2026

SE-2, 16 APR 2026 to 14 MAY 2026