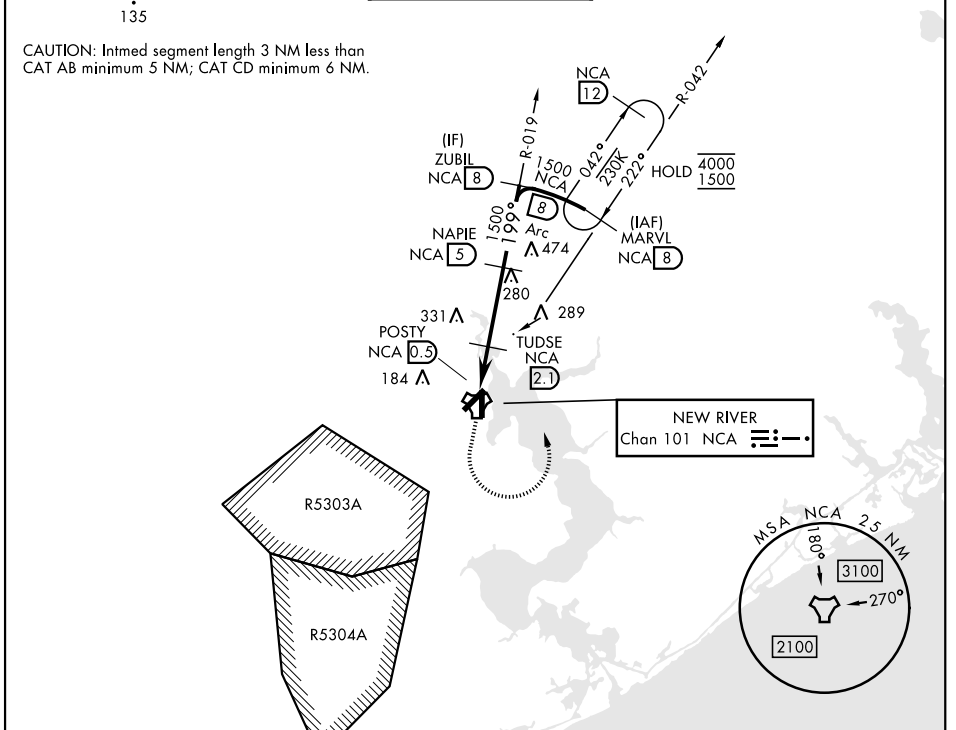


# TACAN RWY 19

TACAN NCA Chan 101	APCH CRS 199°	Rwy Idg TDZE 23 Arprt Elev 26	[USN] NEW RIVER MCAS (MCCUTCHEON FLD) (KNCA)
-----------------------	------------------	---	--

RADAR required	MISSED APPROACH: Climbing left turn to 1500 intercept NCA TACAN R-042 direct MARVL (R-042/8 DME) and hold.
----------------	--

ATIS ★ 288.325	CHERRY POINT APP CON 119.35 377.175	TOWER ★ 134.95 (CTAF) 0★ 360.2	GND CON 121.8 254.275	ASR/PAR
-------------------	--	-----------------------------------	--------------------------	---------

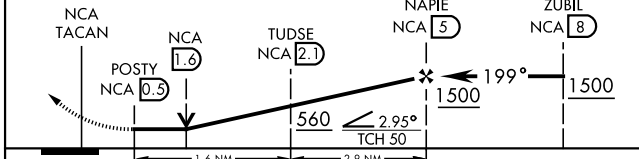
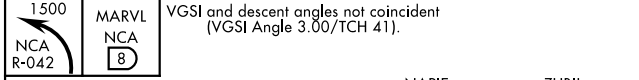


SE-2, 16 APR 2026 to 14 MAY 2026

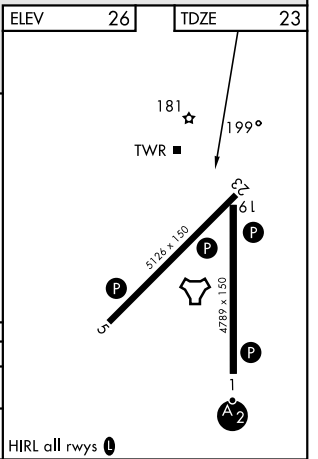
SE-2, 16 APR 2026 to 14 MAY 2026

ELEV	26	TDZE	23
------	----	------	----

EMERG SAFE ALT 100 NM 3400



CATEGORY	A		B		C		D	
S-19	440-1	417	(500-1)		440-1 1/8	417	(500-1 1/8)	
CIRCLING	500-1	474	(500-1)		700-2	674	(700-2)	700-2 1/4
					674	(700-2)		674 (700-2 1/4)



# TACAN RWY 19