

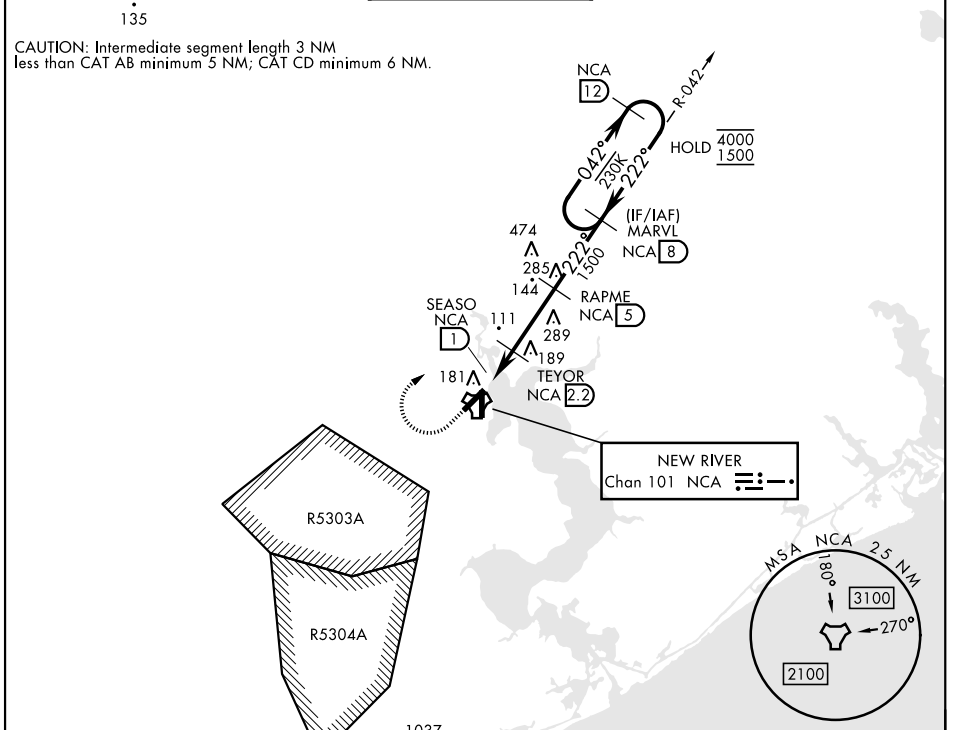
TACAN RWY 23

TACAN NCA Chan 101	APCH CRS 222°	Rwy Idg TDZE Arprt Elev	5125 24 26
------------------------------	-------------------------	-------------------------------	---------------------------------------

[USN] NEW RIVER MCAS (MCCUTCHEON FLD) (KNCA)

RADAR required		MISSED APPROACH: Climb to 600 then climbing right turn to 1500, intercept NCA TACAN R-042 to MARVL and hold.		
----------------	--	--	--	--

ATIS ★ 288.325	CHERRY POINT APP CON 119.35 377.175	TOWER ★ 134.95 (CTAF) 0★ 360.2	GND CON 121.8 254.275	ASR/PAR
--------------------------	---	---	---------------------------------	---------

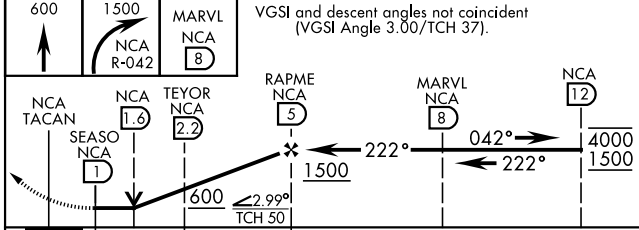


SE-2, 16 APR 2026 to 14 MAY 2026

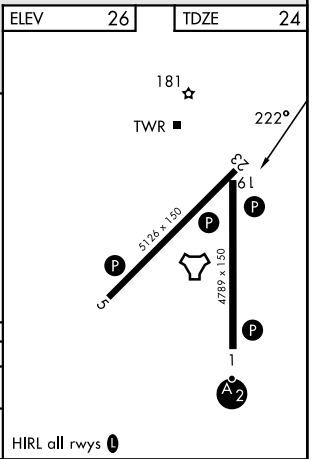
SE-2, 16 APR 2026 to 14 MAY 2026

ELEV	26	TDZE	24
------	----	------	----

EMERG SAFE ALT 100 NM 3400



CATEGORY	A		B	C		D
S-23	440-1	416	(500-1)	440-1½	416	(500-1½)
CIRCLING	500-1	474	(500-1)	700-2 674 (700-2)	700-2¼ 674 (700-2¼)	



TACAN RWY 23