

ILS or LOC RWY 36

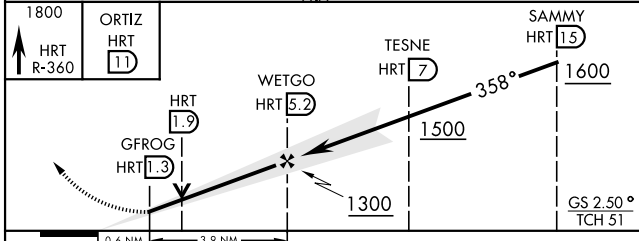
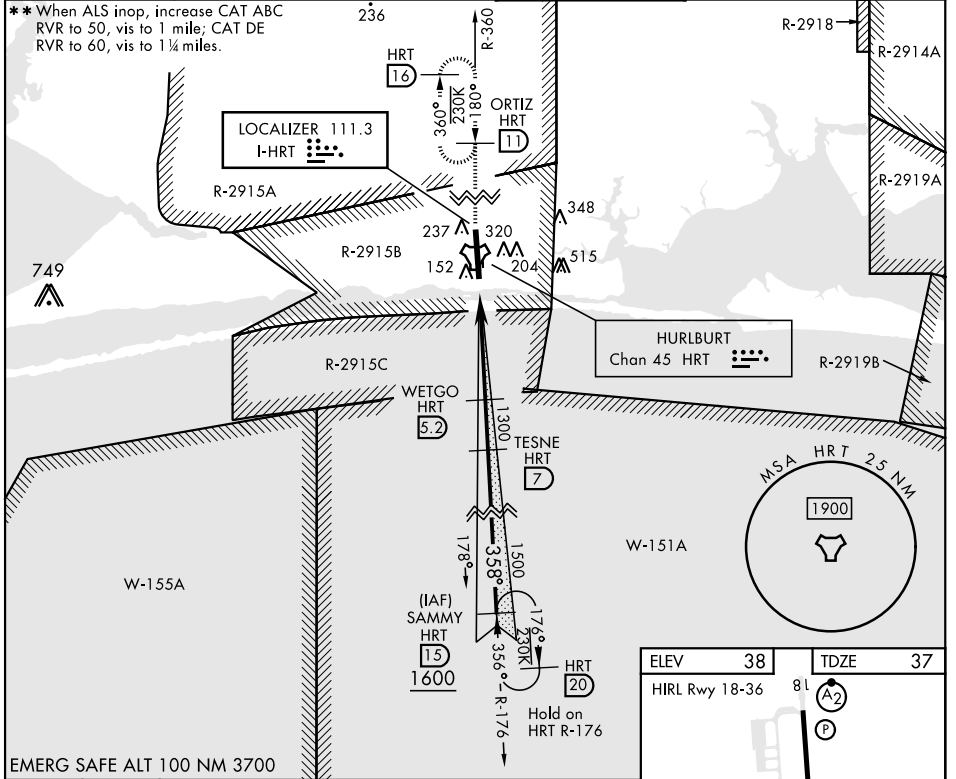
LOC I-HRT 111.3	APCH CRS 358°	Rwy Idg TDZE Arpt Elev 9600 37 38
---------------------------	-------------------------	---

[USAF]

HURLBURT FLD (KHRT)

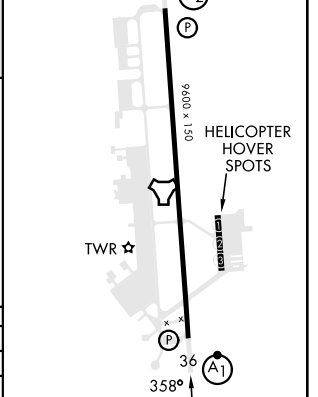
DME or RADAR required for LOC.	ALSIF-1 	MISSED APPROACH: Climb to 1800 on HRT TACAN R-360 to ORTIZ/11 DME and hold.
--------------------------------	-------------	---

ATIS 134.475 360.675	EGLIN APP CON 125.1 281.45 (271°-089°) 132.1 360.6 (090°-270°)	TOWER 126.5 351.675	GND CON 123.975 275.8
--------------------------------	--	-------------------------------	---------------------------------



CATEGORY	A	B	C	D	E
S-ILS 36*	237/24		200	(200-1/2)	
S-LOC 36**	360/24	323 (400-1/2)	360/40 323 (400-3/4)		
CIRCLING	640-1	602 (700-1)	640-1 3/4 602 (700-1 3/4)	640-2 602 (700-2)	880-3 842 (900-3)

ELEV 38	TDZE 37
HRT Rwy 18-36	



FAF to MAP 3.9 NM					
Knots	60	90	120	150	180
Min:Sec	3:54	2:36	1:57	1:34	1:18

ILS or LOC RWY 36

SE-3, 16 APR 2026 to 14 MAY 2026

SE-3, 16 APR 2026 to 14 MAY 2026