

ILS or LOC RWY 25

LITTLE ROCK AFB (KLRF)

LOC I-TYV 109.9	APCH CRS 252°	Rwy Idg 12,001
		TDZE 301
		Arprt Elev 312

[USAF]

RNP APCH RNAV1 - GPS or RADAR required.

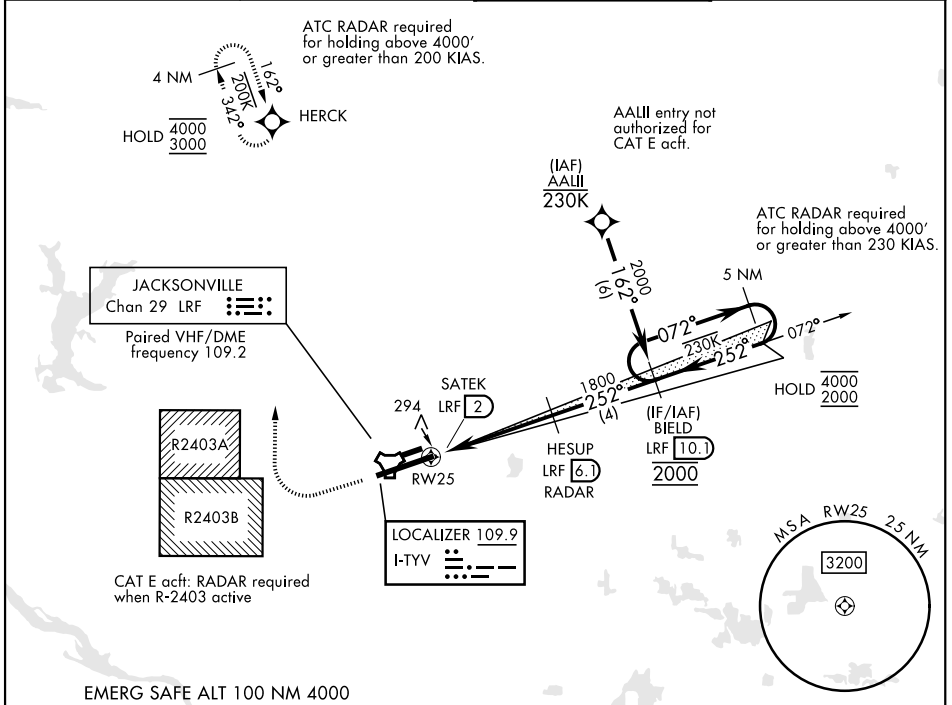
▼ *When TDZL/CL inop, increase RVR to 24. RVR 18 still authorized with use of FD, AP, or HUD to DA.
 ** When ALS inop, increase RVR to 40, vis to ¼ mile.
 *** When ALS inop, increase CAT AB RVR to 55, vis to 1 mile, CAT CDE vis to 1½ miles.
 Circling not authorized S of Rwy 7-25.
 Circling not authorized to Assault Strip.



MISSED APPROACH: Climb to 900 then climbing right turn to 3000 direct HERCK and hold as published.

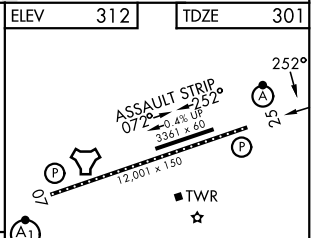
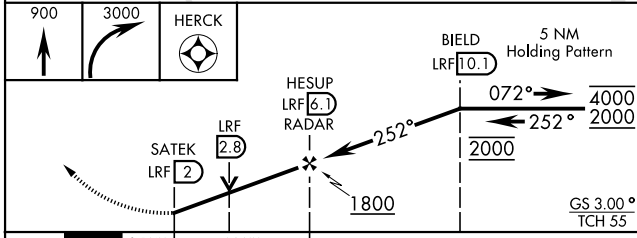
ALTERNATE MISSED APPROACH: Climbing to 3000 fly runway heading until LRF 2 DME, then turn right heading 360°, EFC from ATC.

ATIS ★ 119.175 251.1	APP/DEP CON 119.5 306.2	TOWER 120.6 269.075	GND CON 132.8 275.8
--------------------------------	-----------------------------------	-------------------------------	-------------------------------



SC-1, 16 APR 2026 to 14 MAY 2026

SC-1, 16 APR 2026 to 14 MAY 2026



ELEV	312	TDZE	301		
CATEGORY	A	B	C	D	E
S-ILS 25*	501/18		200	(200-½)	
S-LOC 25**	760/24	459 (500-½)	760/45		459 (500-7/8)
CIRCLING***	780-1 468 (500-1)	920-1 608 (700-1)	920-1¾ 608 (700-1¾)	1040-2¼ 728 (800-2¼)	NOT AUTHORIZED
HIRL Rwy 07-25 TDZL/RCLS Rwy 25 FAF to MAP 4.1 NM					
Knots					
	60	90	120	150	180
Min:Sec					
	4:06	2:44	2:03	1:38	1:22

ILS or LOC RWY 25