

JACKSONVILLE, ARKANSAS

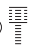
# RNAV (GPS) RWY 25

WAAS CH <b>67565</b> W25A	APCH CRS <b>252°</b>	Rwy ldg TDZE Arpt Elev	<b>12,001</b> <b>301</b> <b>312</b>
---------------------------------	-------------------------	------------------------------	---


(USAF)

LITTLE ROCK AFB (KLRF)

RNP APCH - GPS

ALSF-2  MISSED APPROACH: Climb to 900 then climbing right then turn to 3000 direct HERCK and hold.

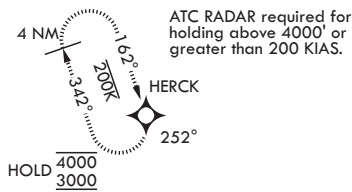
RADAR required

 \*When ALS inop, increase RVR to 40, vis to 3/4 mile. When TDZL/CL inop, increase RVR to 24.  
\*\* When ALS inop, increase CAT AB RVR to 55, vis to 1 mile; CAT CD vis to 1 3/8 miles.

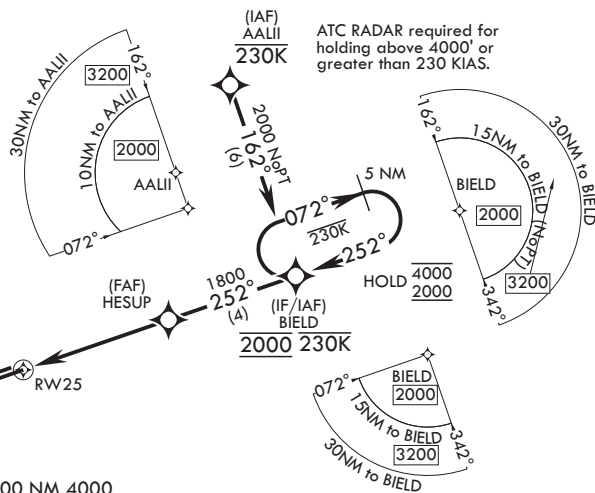
ATIS* <b>119.175 251.1</b>	APP CON/DEP CON <b>119.5 306.2</b>	TOWER <b>120.6 269.075</b>	GND CON <b>132.8 275.8</b>
-------------------------------	---------------------------------------	-------------------------------	-------------------------------

\*\*\* Circling not authorized S of Rwy 7-25.  
Circling not authorized to assault strip.

ALTERNATE MISSED APPROACH: Climbing to 3000, fly runway heading until 2 DME then right turn heading 360°, expect RADAR vectors from ATC.

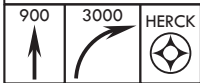
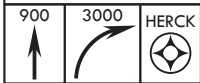
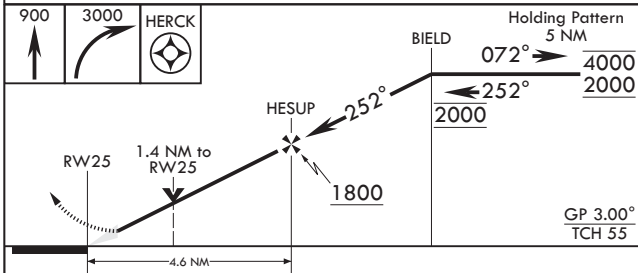
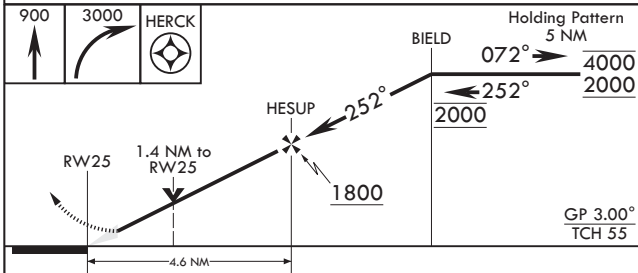
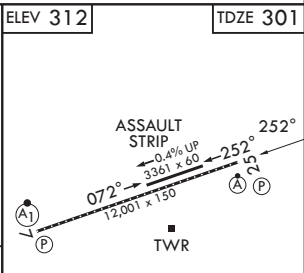


ATC RADAR required for holding above 4000' or greater than 200 KIAS.



ATC RADAR required for holding above 4000' or greater than 230 KIAS.

EMERG SAFE ALT 100 NM 4000

	ELEV 312	TDZE 301			
					
					
CATEGORY	A	B	C	D	BCN
LPV DA*	501/18		200 (200-1/2)		
LNAV MDA**	780/24	479 (500-1/2)	780/50	479 (500-1)	
CIRCLING***	780-1 468 (500-1)	880-1 568 (600-1)	880-1 1/2 568 (600-1 1/2)	1040-2 1/4 728 (800-2 1/4)	
TDZL/CL Rwy 25 HIRL Rwy 7-25					

JACKSONVILLE, ARKANSAS

34°55'N - 92°09'W

LITTLE ROCK AFB (KLRF)

Amdt 1 27NOV25

# RNAV (GPS) RWY 25

SC-1, 16 APR 2026 to 14 MAY 2026

SC-1, 16 APR 2026 to 14 MAY 2026