

JACKSONVILLE, ARKANSAS

RNAV (GPS) RWY 7

LITTLE ROCK AFB (KLRF)

WAAS CH 97202 W07A	APCH CRS 072°	Rwy ldg TDZE Arprt Elev	12,001 309 312
--------------------------	------------------	----------------------------	----------------------

(USAF)

RNP APCH - GPS

ALSIF-1

MISSED APPROACH: Climb to 1000 then climb left turn to 3000 direct HERCK and hold.

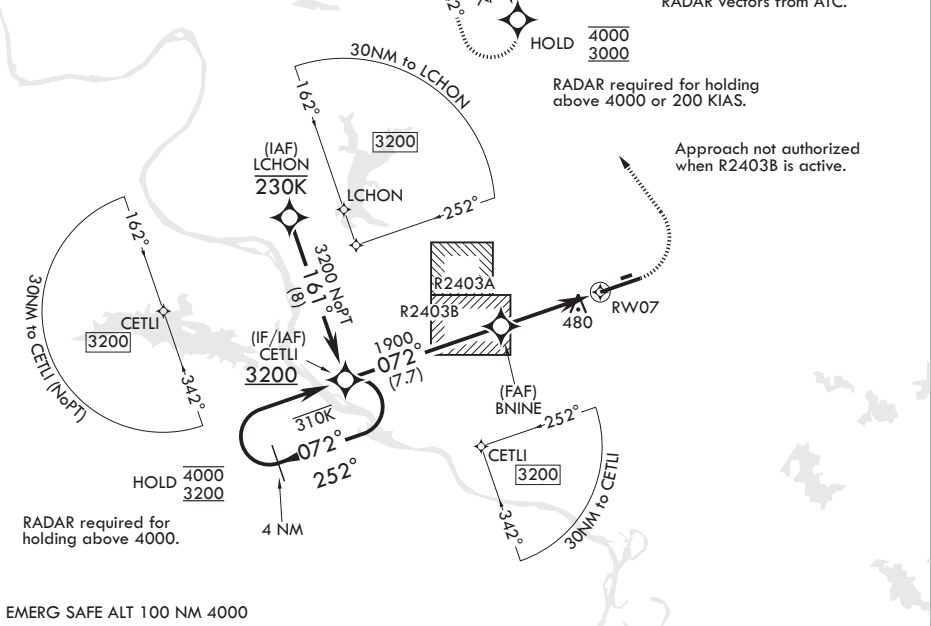
- * When ALS inop, increase RVR to 40, vis to 3/4 mile.
- ** When ALS inop, increase vis to 1 3/8 miles.
- *** When ALS inop, increase CAT AB RVR to 55, vis to 1 mile; CAT CD vis to 1 7/8 miles.

ATIS* 119.175 251.1	APP CON/DEP CON 119.5 306.2	TOWER 120.6 269.075	GND CON 132.8 275.8
------------------------	--------------------------------	------------------------	------------------------

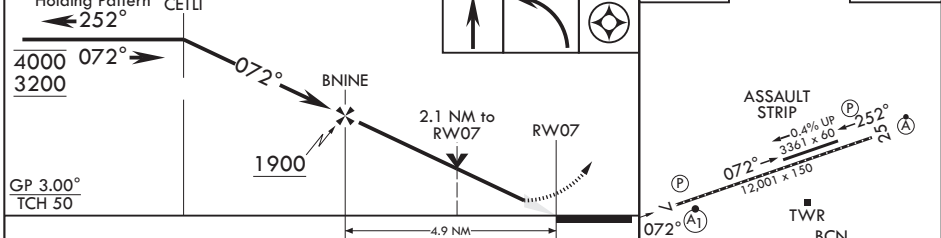
**** Circling not authorized S of Rwy 7-25.
Circling not authorized to Assault Strip.

For uncompensated Baro-VNAV systems,
LNAV/VNAV NA below -15°C or above 54°C.

ALTERNATE MISSED APPROACH:
Climbing to 3000, fly runway heading until 2 DME then left turn heading 360°, expect RADAR vectors from ATC.



4 NM Holding Pattern CETLI ← 252°	1000 3000 HERCK	ELEV 312	TDZE 309
--------------------------------------	-----------------	----------	----------



CATEGORY	A	B	C	D	
LPV DA*	509/24	200	(200-1/2)		
LNAV/VNAV DA**	790/50	481	(500-1)		
LNAV MDA***	980/24	671 (700-1/2)	980-1 1/2 671 (700-1 1/2)		
CIRCLING****	980-1	668 (700-1)	980-1 1/8 668 (700-1 1/8)	1040-2 1/4 728 (800-2 1/4)	HIRL Rwy 7-25 TDZL/CL Rwy 25

JACKSONVILLE, ARKANSAS

34°55'N - 92°09'W

LITTLE ROCK AFB (KLRF)

Amdt 1 27NOV25

RNAV (GPS) RWY 7

SC-1, 16 APR 2026 to 14 MAY 2026

SC-1, 16 APR 2026 to 14 MAY 2026