

# TACAN RWY 25

TACAN LRF Chan <b>29</b>	APCH CRS <b>259°</b>	Rwy ldg TDZE <b>12,001</b> 301 Arprt Elev <b>312</b>
--------------------------	----------------------	--

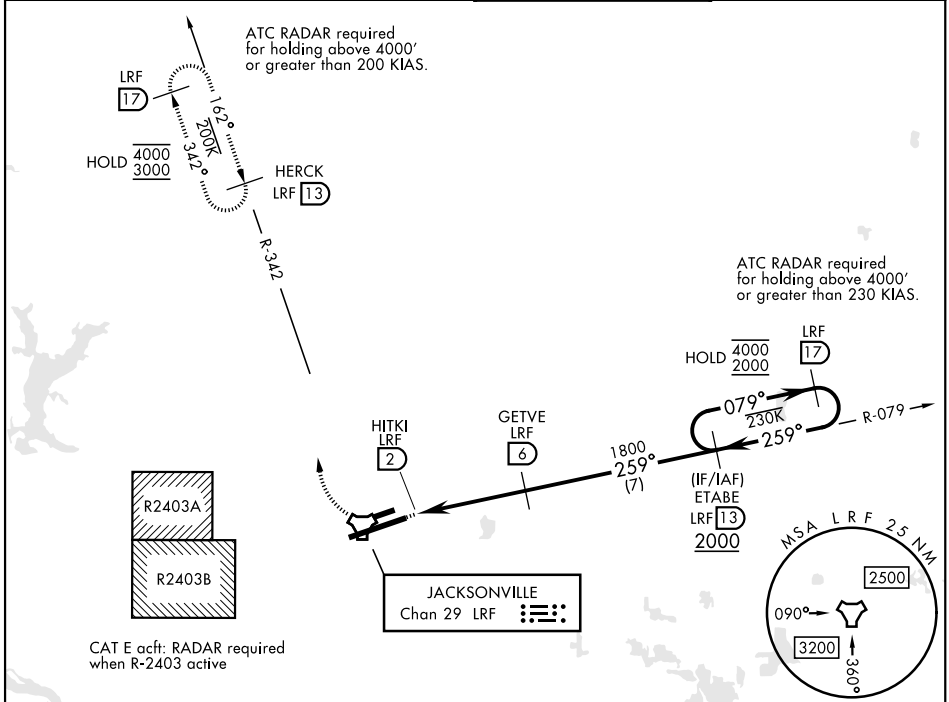
[USAF]

LITTLE ROCK AFB (KLRF)

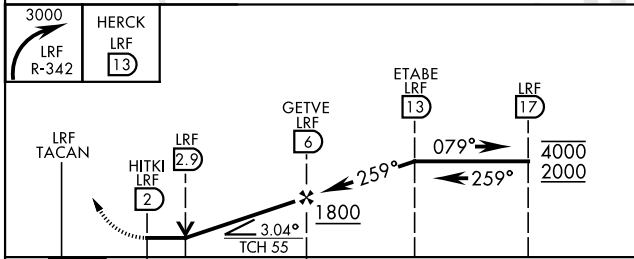
▽ \* When ALS inop, increase CAT AB RVR to 55, vis to 1 mile; CAT CDE vis to 1½ miles.  
 \*\* Circling not authorized S of Rwy 07-25. Circling not authorized to Assault Strip.

A ALSF-2  
 MISSED APPROACH: Climbing right turn to 3000 to intercept LRF R-342 outbound to HERCK and hold as published.  
 ALTERNATE MISSED APPROACH: Climbing to 3000, fly runway heading until LRF 2 DME, then turn right heading 360° EFC from ATC.

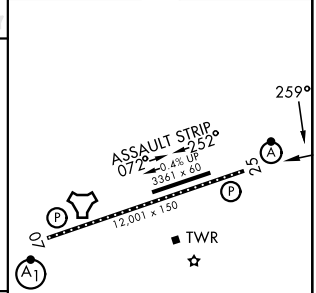
ATIS * <b>119.175 251.1</b>	APP/DEP CON <b>119.5 306.2</b>	TOWER <b>120.6 269.075</b>	GND CON <b>132.8 275.8</b>
--------------------------------	-----------------------------------	-------------------------------	-------------------------------



EMERG SAFE ALT 100 NM 4000



ELEV	312	TDZE	301
------	-----	------	-----



CATEGORY	A	B	C	D	E
S-25 *	800/24	499 (500-½)	800/50	499	(500-1)
CIRCLING **	800-1 488 (500-1)	880-1 568 (600-1)	880-1½ 568 (600-1½)	1040-2¼ 728 (800-2¼)	1040-2½ 728 (800-2½)

HIRL Rwy 07-25  
TDZL/RCLS Rwy 25

# TACAN RWY 25

SC-1, 16 APR 2026 to 14 MAY 2026

SC-1, 16 APR 2026 to 14 MAY 2026