

# TACAN RWY 07

TACAN LRF Chan <b>29</b>	APCH CRS <b>058°</b>	Rwy ldg TDZE Arprt Elev
		<b>12,001</b> <b>309</b> <b>312</b>

[USAF]

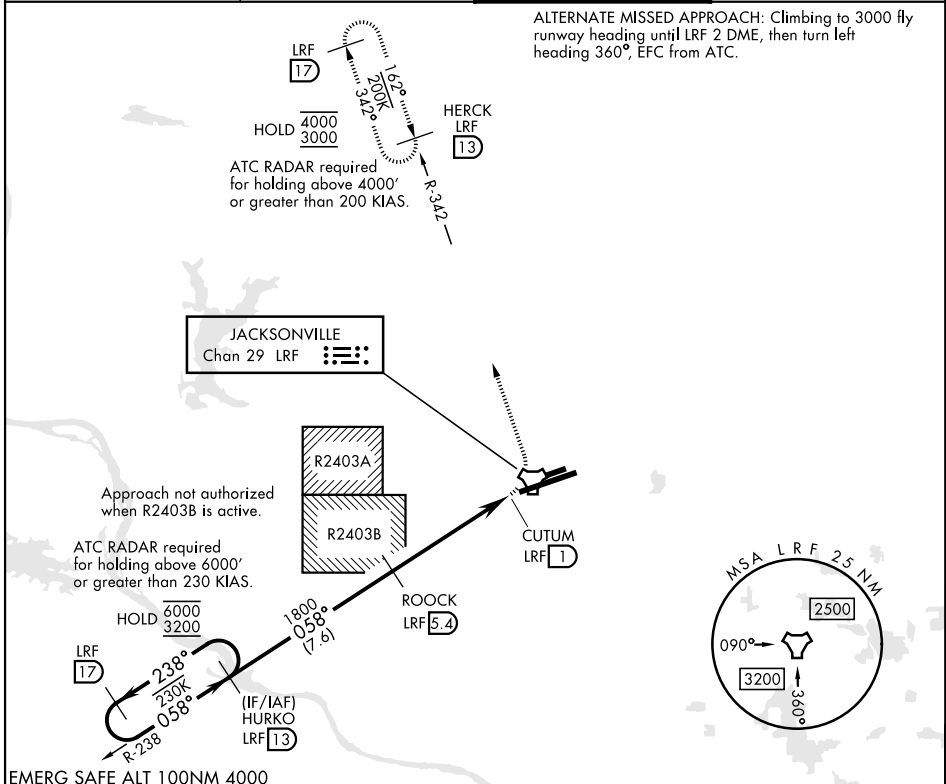
LITTLE ROCK AFB (KLRF)

▼ \* When ALS inop, increase CAT AB RVR to 55, vis to 1 mile; CAT CDE vis to 1/4 miles.  
 \*\* Circling not authorized S of Rwy 07-25.  
 Circling not authorized to Assault Strip.

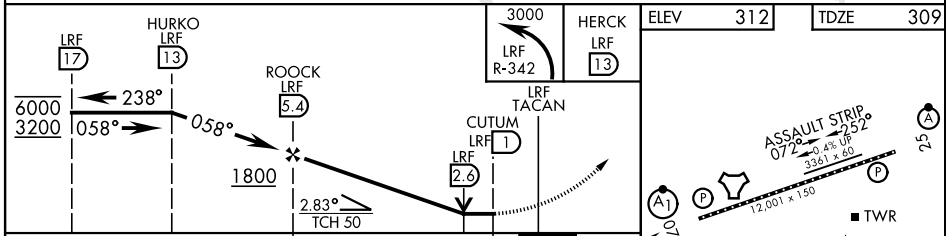


MISSED APPROACH: Climbing left turn turn to 3000 to incip LRF R-342 outbound to HERCK and hold as published.

ATIS ★ <b>119.175 251.1</b>	APP/DEP CON <b>119.5 306.2</b>	TOWER <b>120.6 269.075</b>	GND CON <b>132.8 275.8</b>
--------------------------------	-----------------------------------	-------------------------------	-------------------------------



EMERG SAFE ALT 100NM 4000



	ELEV 312	TDZE 309			
CATEGORY	A	B	C	D	E
S-07 *	980/24 671 (700-1/2)		980-1 1/2	671	(700-1 1/2)
CIRCLING **	980-1 668 (700-1)		980-1 7/8 668 (700-1 7/8)	1040-2 1/4 728 (800-2 1/4)	1040-2 1/2 728 (800-2 1/2)

# TACAN RWY 07

SC-1, 16 APR 2026 to 14 MAY 2026

SC-1, 16 APR 2026 to 14 MAY 2026