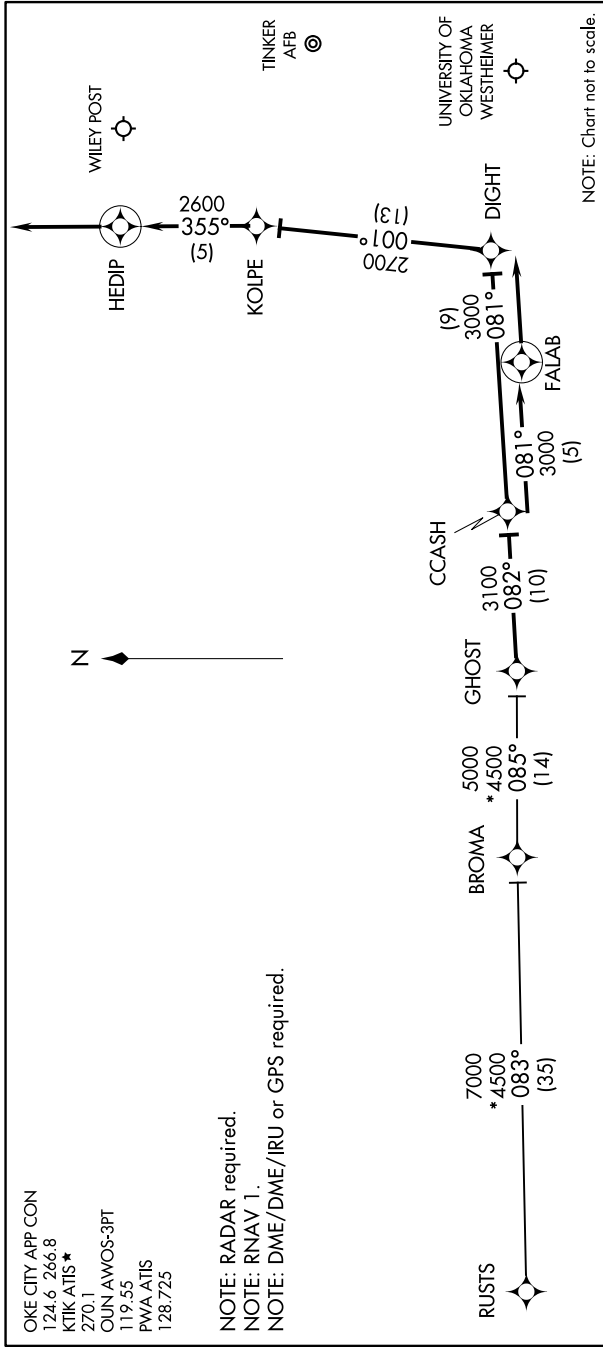


# CCASH ONE ARRIVAL (RNAV)

OKLAHOMA CITY, OKLAHOMA

SC-1, 16 APR 2026 to 14 MAY 2026



NOTE: RADAR required.  
 NOTE: RNAV 1.  
 NOTE: DME/DME/IRU or GPS required.

## ARRIVAL ROUTE DESCRIPTION

BROMA TRANSITION (BROMA.CCASH1):  
RUSTS TRANSITION (RUSTS.CCASH1):

From GHOST on track 082° to CCASH.

LANDING OUN/KTIK: From CCASH on track 081° to FALAB, then on track 081°. Expect radar vectors to final approach course.

LANDING PWA RW17L: From CCASH on track 081° to DIGHT, then on track 001° to KOLPE, then on track 355° to HEDIP, then on track 355°. Expect radar vectors to final approach course.

LANDING PWA RW35R: From CCASH on track 081° to FALAB, then on track 081°. Expect radar vectors to final approach course.

# CCASH ONE ARRIVAL (RNAV)

OKLAHOMA CITY, OKLAHOMA

SC-1, 16 APR 2026 to 14 MAY 2026