

LOC I-PWA 110.15	APP CRS 175°	Rwy Ldg TDZE Apt Elev 6844 1291 1300
----------------------------	------------------------	--

ILS or LOC RWY 17L

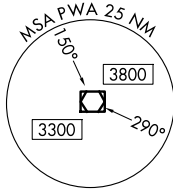
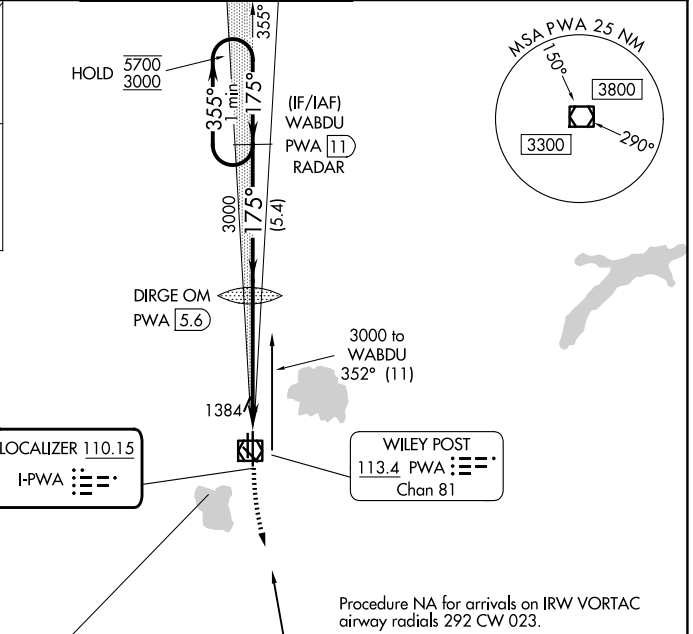
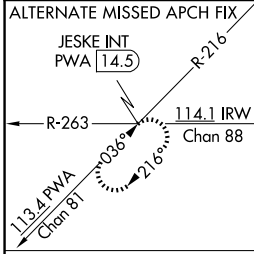
WILEY POST (PWA)

DME or RADAR required.

MALSR

MISSED APPROACH: Climb to 1800 then climbing left turn to 3000 direct IRW VORTAC and hold.

ATIS 128.725	OKE CITY APP CON 124.6 266.8	WILEY POST TOWER * 126.9 (CTAF) 0 306.9	GND CON 121.7	UNICOM 122.95



SC-1, 16 APR 2026 to 14 MAY 2026

SC-1, 16 APR 2026 to 14 MAY 2026

