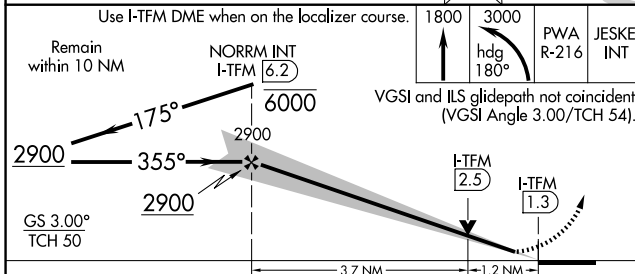
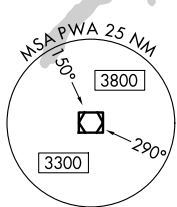
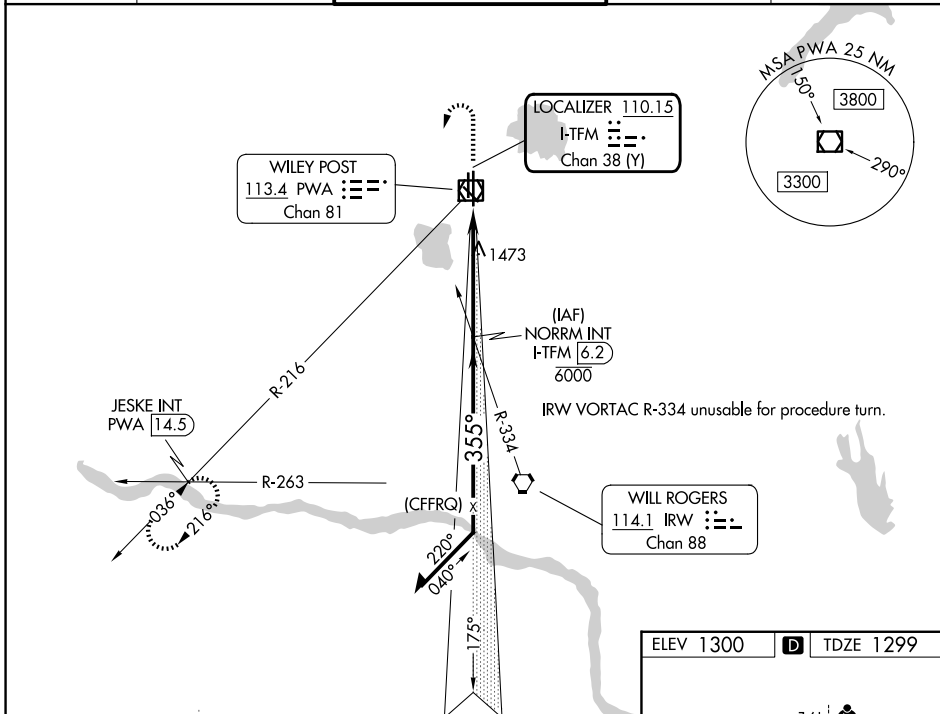


LOC/DME I-TFM 110.15 Chan 38 (Y)	APP CRS 355°	Rwy Ldg 6844 TDZE 1299 Apt Elev 1300
---	------------------------	---

ILS or LOC RWY 35R

WILEY POST (PWA)

DME and RADAR required.		MALSR	MISSED APPROACH: Climb to 1800 then climbing left turn to 3000 on heading 180° and PWA VOR/DME R-216 to JESKE INT/PWA 14.5 DME and hold.	
ATIS 128.725	OKE CITY APP CON 124.6 266.8	WILEY POST TOWER ★ 126.9 (CTAF) 306.9	GND CON 121.7	UNICOM 122.95



ELEV 1300	D	TDZE 1299
HIRL Rwy 17L-35R	MIRL Rwys 13-31 and 17R-35L	REIL Rwys 17R and 35L
FAF to MAP 4.9 NM		
Knots	60	90 120 150 180
Min:Sec	4:48	3:12 2:24 1:55 1:36

CATEGORY	A	B	C	D
S-ILS 35R	1499-1/2		200 (200-1/2)	
S-LOC 35R	1740-1/2	441 (500-1/2)	1740-7/8	441 (500-7/8)
CIRCLING	1780-1	480 (500-1)	1880-1 1/2 580 (600-1 1/2)	1880-2 580 (600-2)

SC-1, 16 APR 2026 to 14 MAY 2026

SC-1, 16 APR 2026 to 14 MAY 2026