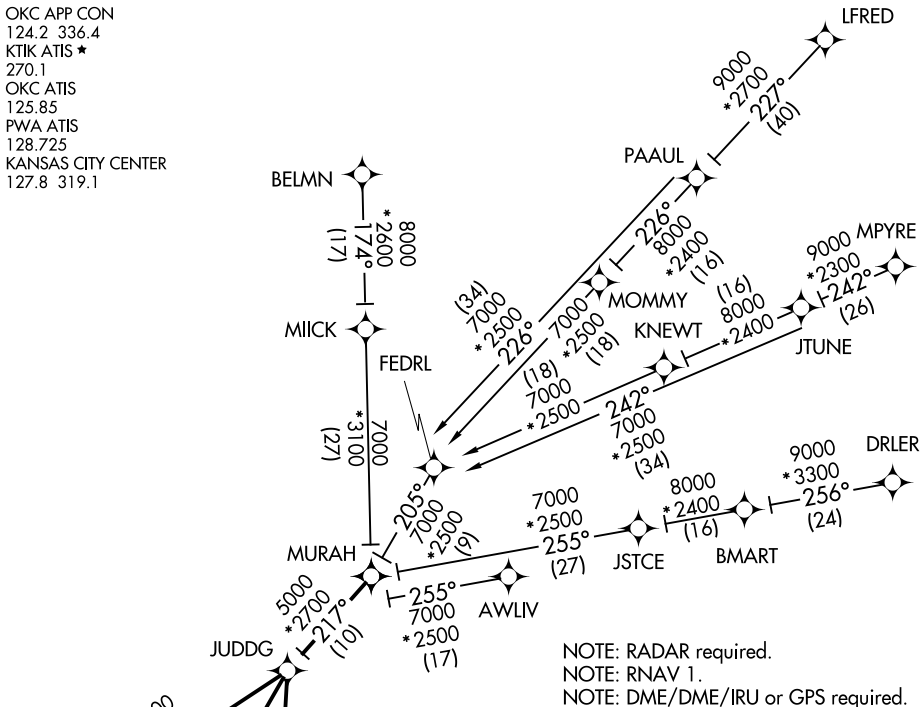


JUDDG TWO ARRIVAL (RNAV)

OKLAHOMA CITY, OKLAHOMA

OKC APP CON
 124.2 336.4
 KTIK ATIS ★
 270.1
 OKC ATIS
 125.85
 PWA ATIS
 128.725
 KANSAS CITY CENTER
 127.8 319.1



NOTE: RADAR required.
 NOTE: RNAV 1.
 NOTE: DME/DME/IRU or GPS required.

ARRIVAL ROUTE DESCRIPTION

- AWLIV TRANSITION (AWLIV.JUDDG2)
- BELMN TRANSITION (BELMN.JUDDG2): (For non-GPS equipped aircraft, IFI DME must be operational).
- BMART TRANSITION (BMART.JUDDG2)
- DRLER TRANSITION (DRLER.JUDDG2)
- JTUNE TRANSITION (JTUNE.JUDDG2)
- LFRED TRANSITION (LFRED.JUDDG2)
- MPYRE TRANSITION (MPYRE.JUDDG2)
- PAAUL TRANSITION (PAAUL.JUDDG2)

From MURAH on track 217° to JUDDG.

LANDING OUN/TIK: From JUDDG on track 192° to PEGOE, then on track 192°. Expect radar vectors to final approach course.

LANDING PWA RWY 17L: From JUDDG on track 236° to ODPIE, then on track 236°. Expect radar vectors to final approach course.

LANDING PWA RWY 35R: From JUDDG on track 225° to QUOIT, then on track 225°. Expect radar vectors to final approach course.

NOTE: Chart not to scale.

JUDDG TWO ARRIVAL (RNAV)

(MURAH.JUDDG2) 10NOV16

OKLAHOMA CITY, OKLAHOMA

SC-1, 16 APR 2026 to 14 MAY 2026

SC-1, 16 APR 2026 to 14 MAY 2026