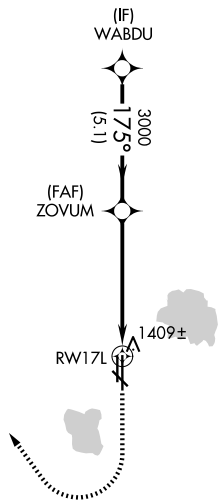
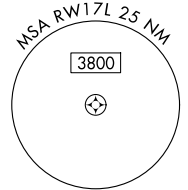
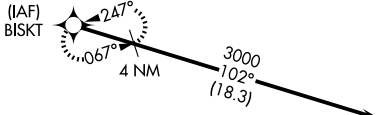


WAAS CH <b>72737</b> <b>W17A</b>	APP CRS <b>175°</b>	Rwy Ldg TDZE <b>1291</b> Apt Elev <b>1300</b>
--	------------------------	---

# RNAV (GPS) RWY 17L

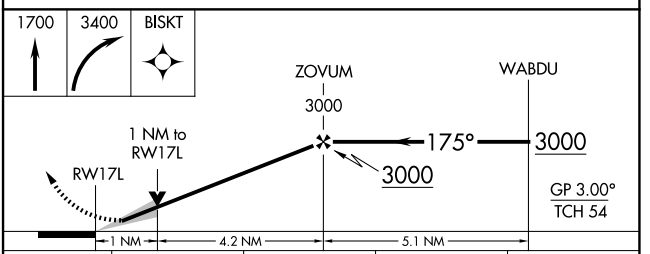
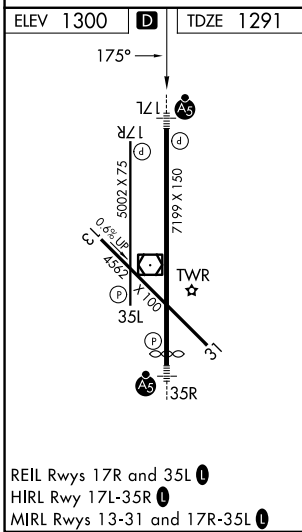
WILEY POST (PWA)

RNP APCH-GPS.		MALSR  MISSED APPROACH: Climb to 1700 then climbing right turn to 3400 direct BISKT and hold.		
ATIS <b>128.725</b>	OKE CITY APP CON <b>124.6 266.8</b>	WILEY POST TOWER ★ <b>126.9 (CTAF) 306.9</b>	GND CON <b>121.7</b>	UNICOM <b>122.95</b>



SC-1, 16 APR 2026 to 14 MAY 2026

SC-1, 16 APR 2026 to 14 MAY 2026



CATEGORY	A	B	C	D
LPV DA		1491-½	200 (200-½)	
LNAV/VNAV DA		1590-½	299 (300-½)	
LNAV MDA	1660-½	369 (400-½)	1660-⅝	369 (400-⅝)
CIRCLING	1780-1	480 (500-1)	1880-1½ 580 (600-1½)	1880-2 580 (600-2)