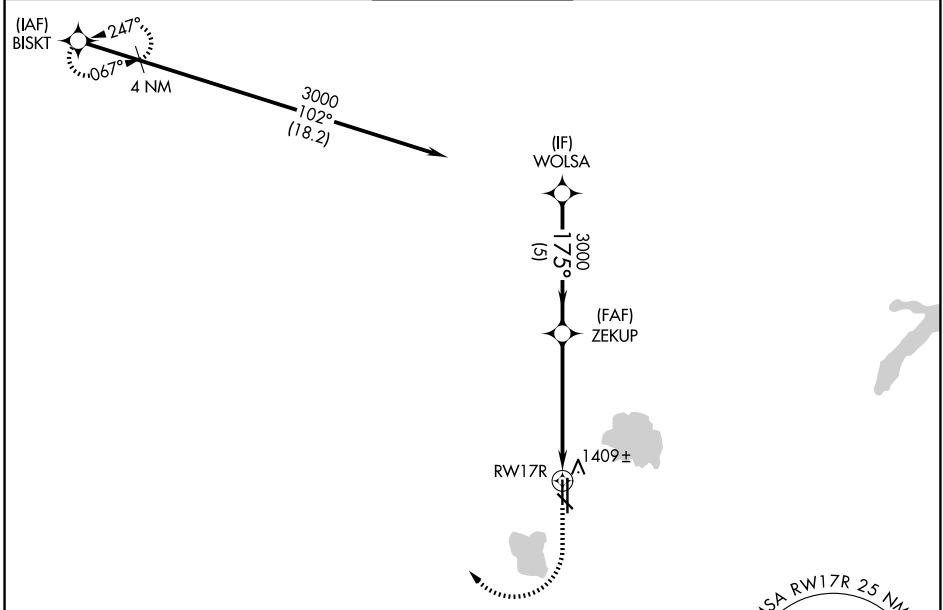


# RNAV (GPS) RWY 17R

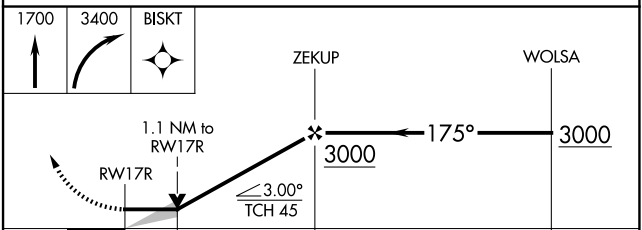
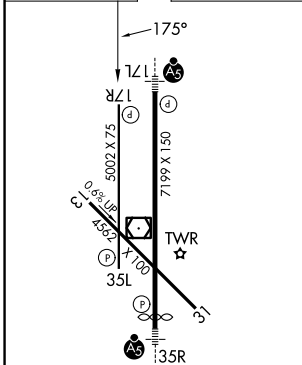
WILEY POST (PWA)

APP CRS	Rwy Ldg	<b>5002</b>
<b>175°</b>	TDZE	<b>1283</b>
	Apt Elev	<b>1300</b>

RNP APCH-GPS.		MISSED APPROACH: Climb to 1700 then climbing right turn to 3400 direct BISKT and hold.		
ATIS	OKE CITY APP CON	WILEY POST TOWER ★	GND CON	UNICOM
<b>128.725</b>	<b>124.6 266.8</b>	<b>126.9 (CTAF) 306.9</b>	<b>121.7</b>	<b>122.95</b>



ELEV	1300	<b>D</b>	TDZE	1283
------	------	----------	------	------



CATEGORY	A	B	C	D
LNAV MDA	1660-1 377 (400-1)			
CIRCLING	1780-1	480 (500-1)	1880-1½ 580 (600-1½)	1880-2 580 (600-2)

REIL Rwy 17R and 35L  
 HIRL Rwy 17L-35R  
 MIRL Rwy 13-31 and 17R-35L

OKLAHOMA CITY, OKLAHOMA  
 Orig-A 19MAY22

35°32'N-97°39'W

WILEY POST (PWA)  
**RNAV (GPS) RWY 17R**

SC-1, 16 APR 2026 to 14 MAY 2026

SC-1, 16 APR 2026 to 14 MAY 2026